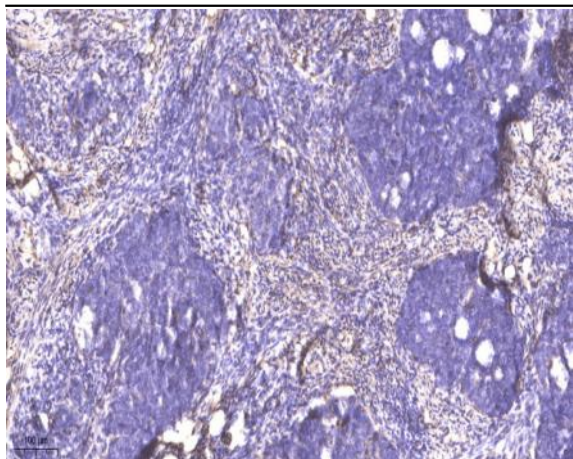


RanBP3 (Phospho Ser58) rabbit pAb

Catalog No :	YP1460
Reactivity :	Human;Rat;Mouse;
Applications :	WB;ELISA;IHC
Target :	RanBP3
Fields :	>>Human T-cell leukemia virus 1 infection
Gene Name :	RANBP3
Protein Name :	RanBP3 (Ser58)
Human Gene Id :	8498
Human Swiss Prot No :	Q9H6Z4
Mouse Gene Id :	71810
Mouse Swiss Prot No :	Q9CT10
Immunogen :	Synthesized phospho peptide around human RanBP3 (Ser58)
Specificity :	This antibody detects endogenous levels of Human RanBP3 (phospho-Ser58)
Formulation :	Liquid in PBS containing 50% glycerol, 0.5% BSA and 0.02% sodium azide.
Source :	Polyclonal, Rabbit,IgG
Dilution :	WB 1:500-2000;IHC 1:50-300; ELISA 2000-20000
Purification :	The antibody was affinity-purified from rabbit serum by affinity-chromatography using specific immunogen.
Concentration :	1 mg/ml

Storage Stability :	-15°C to -25°C/1 year(Do not lower than -25°C)
Observed Band :	60kD
Background :	This gene encodes a protein with a RanBD1 domain that is found in both the nucleus and cytoplasm. This protein plays a role in nuclear export as part of a heteromeric complex. Alternate transcriptional splice variants, encoding different isoforms, have been characterized. [provided by RefSeq, Jul 2008],
Function :	function:Acts as a cofactor for XPO1/CRM1-mediated nuclear export, perhaps as export complex scaffolding protein. Bound to XPO1/CRM1, stabilizes the XPO1/CRM1-cargo interaction. In the absence of Ran-bound GTP prevents binding of XPO1/CRM1 to the nuclear pore complex. Binds to CHC1/RCC1 and increases the guanine nucleotide exchange activity of CHC1/RCC1. Recruits XPO1/CRM1 to CHC1/RCC1 in a Ran-dependent manner.,PTM:Phosphorylated upon DNA damage, probably by ATM or ATR.,similarity:Contains 1 RanBD1 domain.,subunit:Interacts with CHC1 in a Ran-stimulated manner. Interacts with XPO1.,tissue specificity:Widely expressed with high levels in testis and heart.,
Subcellular Location :	Cytoplasm . Nucleus .
Expression :	Widely expressed with high levels in testis and heart.
Sort :	13811
No4 :	1
Host :	Rabbit
Modifications :	Phospho

Products Images



Immunohistochemical analysis of paraffin-embedded human cervical carcinoma. 1, Antibody was diluted at 1:200(4° overnight). 2, Tris-EDTA,pH9.0 was used for antigen retrieval. 3,Secondary antibody was diluted at 1:200(room temperature, 45min).