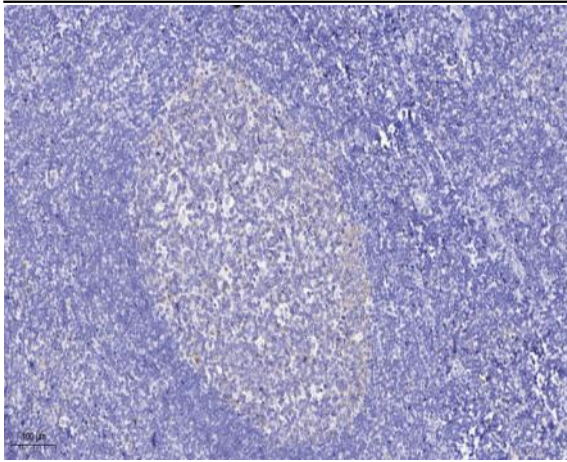


**PPIG (Phospho Ser376) rabbit pAb**

<b>Catalog No :</b>	YP1448
<b>Reactivity :</b>	Human;Mouse;Rat
<b>Applications :</b>	WB;IHC
<b>Target :</b>	PPIG
<b>Gene Name :</b>	PPIG
<b>Protein Name :</b>	PPIG (Ser376)
<b>Human Gene Id :</b>	9360
<b>Human Swiss Prot No :</b>	Q13427
<b>Mouse Gene Id :</b>	228005
<b>Mouse Swiss Prot No :</b>	A2AR02
<b>Rat Gene Id :</b>	83624
<b>Rat Swiss Prot No :</b>	O55035
<b>Immunogen :</b>	Synthesized phospho peptide around human PPIG (Ser376)
<b>Specificity :</b>	This antibody detects endogenous levels of Human Mouse Rat PPIG (phospho-Ser376)
<b>Formulation :</b>	Liquid in PBS containing 50% glycerol, 0.5% BSA and 0.02% sodium azide.
<b>Source :</b>	Polyclonal, Rabbit,IgG
<b>Dilution :</b>	WB 1:500-2000;IHC 1:50-300
<b>Purification :</b>	The antibody was affinity-purified from rabbit serum by affinity-chromatography using specific immunogen.

<b>Concentration :</b>	1 mg/ml
<b>Storage Stability :</b>	-15°C to -25°C/1 year(Do not lower than -25°C)
<b>Observed Band :</b>	82kD
<b>Function :</b>	<p>catalytic activity:Peptidylproline (omega=180) = peptidylproline (omega=0).,domain:The RS domain is required for the interaction with the phosphorylated C-terminal domain of RNA polymerase II.,enzyme regulation:Cyclosporin A (CsA)-sensitive.,function:PPIases accelerate the folding of proteins.,function:PPIases accelerate the folding of proteins. It catalyzes the cis-trans isomerization of proline imidic peptide bonds in oligopeptides.,function:PPIases accelerate the folding of proteins. It catalyzes the cis-trans isomerization of proline imidic peptide bonds in oligopeptides. May be implicated in the folding, transport, and assembly of proteins. May play an important role in the regulation of pre-mRNA splicing.,PTM:Phosphorylated upon DNA damage, probably by ATM or ATR.,similarity:Belongs to the cyclophilin-type PPIase family.,similarity:Contains 1 PPIase cyclophilin-type domain.,subcell</p>
<b>Subcellular Location :</b>	Nucleus matrix . Nucleus speckle . Colocalizes with RNA splicing factors at nuclear speckles. .
<b>Expression :</b>	Ubiquitous.
<b>Sort :</b>	12952
<b>No4 :</b>	1
<b>Host :</b>	Rabbit
<b>Modifications :</b>	Phospho

## Products Images



Immunohistochemical analysis of paraffin-embedded human tonsil. 1, Antibody was diluted at 1:200(4° overnight). 2, Tris-EDTA,pH9.0 was used for antigen retrieval. 3,Secondary antibody was diluted at 1:200(room temperature, 45min).