

MFF (Phospho Ser146) rabbit pAb

Catalog No :	YP1403
Reactivity :	Human;Mouse;Rat
Applications :	WB;ELISA;IHC
Target :	MFF
Protein Name :	MFF (Ser146)
Human Gene Id :	56947
Human Swiss Prot No :	Q9GZY8
Mouse Gene Id :	75734
Mouse Swiss Prot No :	Q6PCP5
Rat Gene Id :	100911613
Rat Swiss Prot No :	Q4KM98
Immunogen :	Synthesized phospho peptide around human MFF (Ser146)
Specificity :	This antibody detects endogenous levels of Human Mouse Rat MFF (phospho-Ser146)
Formulation :	Liquid in PBS containing 50% glycerol, 0.5% BSA and 0.02% sodium azide.
Source :	Polyclonal, Rabbit,IgG
Dilution :	WB 1:500-2000;IHC 1:50-300; ELISA 2000-20000
Purification :	The antibody was affinity-purified from rabbit serum by affinity-chromatography using specific immunogen.
Concentration :	1 mg/ml

Storage Stability : -15°C to -25°C/1 year(Do not lower than -25°C)

Observed Band : 37kD

Subcellular Location : Mitochondrion outer membrane ; Single-pass type IV membrane protein . Peroxisome . Cytoplasmic vesicle, secretory vesicle, synaptic vesicle .

Expression : Highly expressed in heart, kidney, liver, brain, muscle, and stomach.

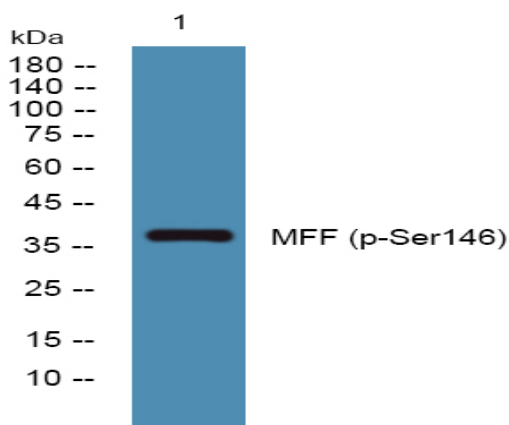
Sort : 9610

No4 : 1

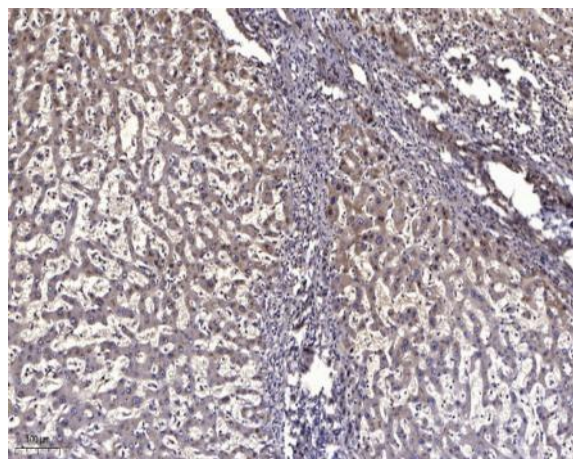
Host : Rabbit

Modifications : Phospho

Products Images



Western blot analysis of lysates from U2OS cells, primary antibody was diluted at 1:1000, 4° over night



Immunohistochemical analysis of paraffin-embedded human liver cancer. 1, Antibody was diluted at 1:200(4° overnight). 2, Tris-EDTA,pH9.0 was used for antigen retrieval. 3,Secondary antibody was diluted at 1:200(room temperature, 45min).