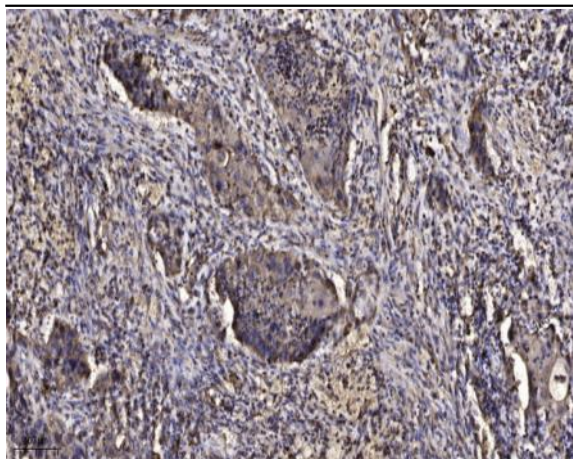


MCM3 (Phospho Ser112) rabbit pAb

| | |
|------------------------------|---|
| Catalog No : | YP1398 |
| Reactivity : | Human;Rat;Mouse; |
| Applications : | WB;ELISA;IHC |
| Target : | MCM3 |
| Fields : | >>DNA replication;>>Cell cycle |
| Gene Name : | MCM3 |
| Protein Name : | MCM3 (Ser112) |
| Human Gene Id : | 4172 |
| Human Swiss Prot No : | P25205 |
| Mouse Gene Id : | 17215 |
| Mouse Swiss Prot No : | P25206 |
| Immunogen : | Synthesized phospho peptide around human MCM3 (Ser112) |
| Specificity : | This antibody detects endogenous levels of Human MCM3 (phospho-Ser112) |
| Formulation : | Liquid in PBS containing 50% glycerol, 0.5% BSA and 0.02% sodium azide. |
| Source : | Polyclonal, Rabbit,IgG |
| Dilution : | WB 1:500-2000;IHC 1:50-300; ELISA 2000-20000 |
| Purification : | The antibody was affinity-purified from rabbit serum by affinity-chromatography using specific immunogen. |
| Concentration : | 1 mg/ml |

| | |
|-------------------------------|---|
| Storage Stability : | <u>-15°C to -25°C/1 year(Do not lower than -25°C)</u> |
| Observed Band : | <u>89kD</u> |
| Cell Pathway : | <u>DNA replication;Cell_Cycle_G1S;Cell_Cycle_G2M_DNA;</u> |
| Background : | <u>The protein encoded by this gene is one of the highly conserved mini-chromosome maintenance proteins (MCM) that are involved in the initiation of eukaryotic genome replication. The hexameric protein complex formed by MCM proteins is a key component of the pre-replication complex (pre_RC) and may be involved in the formation of replication forks and in the recruitment of other DNA replication related proteins. This protein is a subunit of the protein complex that consists of MCM2-7. It has been shown to interact directly with MCM5/CDC46. This protein also interacts with and is acetylated by MCM3AP, a chromatin-associated acetyltransferase. The acetylation of this protein inhibits the initiation of DNA replication and cell cycle progression. Two transcript variants encoding different isoforms have been found for this gene. [provided by RefSeq, Jul 2012],</u> |
| Function : | <u>function:Acts as a factor that allows the DNA to undergo a single round of replication per cell cycle. Required for DNA replication and cell proliferation.,miscellaneous:Associated with the replication-specific DNA polymerase alpha.,PTM:Phosphorylated upon DNA damage, probably by ATM or ATR.,similarity:Belongs to the MCM family.,similarity:Contains 1 MCM domain.,</u> |
| Subcellular Location : | <u>Nucleus . Chromosome . Associated with chromatin before the formation of nuclei and detaches from it as DNA replication progresses. .</u> |
| Expression : | <u>Cervix,Coronary artery,Epithelium,Lymph,Osteosarcoma,Pancre</u> |
| Sort : | <u>9464</u> |
| No4 : | <u>1</u> |
| Host : | <u>Rabbit</u> |
| Modifications : | <u>Phospho</u> |

Products Images



Immunohistochemical analysis of paraffin-embedded human Squamous cell carcinoma of lung. 1, Antibody was diluted at 1:200(4° overnight). 2, Tris-EDTA,pH9.0 was used for antigen retrieval. 3,Secondary antibody was diluted at 1:200(room temperature, 45min).