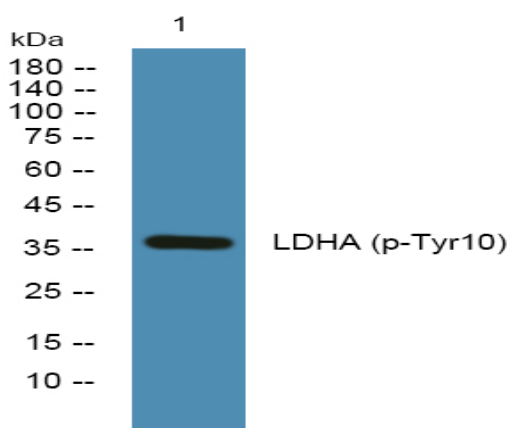


LDHA (Phospho Tyr10) rabbit pAb

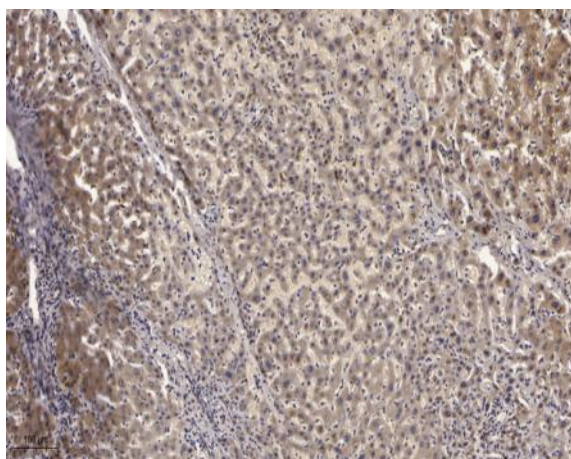
Catalog No :	YP1385
Reactivity :	Human;Mouse;Rat
Applications :	WB;ELISA;IHC
Target :	LDHA
Fields :	>>Glycolysis / Gluconeogenesis;>>Cysteine and methionine metabolism;>>Pyruvate metabolism;>>Propanoate metabolism;>>Metabolic pathways;>>HIF-1 signaling pathway;>>Glucagon signaling pathway;>>Central carbon metabolism in cancer
Gene Name :	LDHA PIG19
Protein Name :	LDHA (Tyr10)
Human Gene Id :	3939
Human Swiss Prot No :	P00338
Mouse Gene Id :	16828
Mouse Swiss Prot No :	P06151
Rat Gene Id :	24533
Rat Swiss Prot No :	P04642
Immunogen :	Synthesized phospho peptide around human LDHA (Tyr10)
Specificity :	This antibody detects endogenous levels of Human Mouse Rat LDHA (phospho-Tyr10)
Formulation :	Liquid in PBS containing 50% glycerol, 0.5% BSA and 0.02% sodium azide.
Source :	Polyclonal, Rabbit,IgG

Dilution :	WB 1:500-2000;IHC 1:50-300; ELISA 2000-20000
Purification :	The antibody was affinity-purified from rabbit serum by affinity-chromatography using specific immunogen.
Concentration :	1 mg/ml
Storage Stability :	-15°C to -25°C/1 year(Do not lower than -25°C)
Observed Band :	36kD
Cell Pathway :	Glycolysis / Gluconeogenesis;Cysteine and methionine metabolism;Pyruvate metabolism;Propanoate metabolism;
Background :	The protein encoded by this gene catalyzes the conversion of L-lactate and NAD to pyruvate and NADH in the final step of anaerobic glycolysis. The protein is found predominantly in muscle tissue and belongs to the lactate dehydrogenase family. Mutations in this gene have been linked to exertional myoglobinuria. Multiple transcript variants encoding different isoforms have been found for this gene. The human genome contains several non-transcribed pseudogenes of this gene. [provided by RefSeq, Sep 2008],
Function :	catalytic activity:(S)-lactate + NAD(+) = pyruvate + NADH.,caution:The sequence shown here is derived from an Ensembl automatic analysis pipeline and should be considered as preliminary data.,disease:Defects in LDHA are a cause of exertional myoglobinuria.,online information:Lactate dehydrogenase entry,pathway:Fermentation; pyruvate fermentation to lactate; (S)-lactate from pyruvate: step 1/1.,similarity:Belongs to the LDH/MDH superfamily.,similarity:Belongs to the LDH/MDH superfamily. LDH family.,subunit:Homotetramer.,
Subcellular Location :	Cytoplasm.
Expression :	Predominantly expressed in anaerobic tissues such as skeletal muscle and liver.
Tag :	orthogonal
Sort :	9155
No4 :	1
Host :	Rabbit
Modifications :	Phospho

Products Images



Western blot analysis of lysates from SH-SY5Y cells, primary antibody was diluted at 1:1000, 4° over night



Immunohistochemical analysis of paraffin-embedded human liver cancer. 1, Antibody was diluted at 1:200(4° overnight). 2, Tris-EDTA,pH9.0 was used for antigen retrieval. 3,Secondary antibody was diluted at 1:200(room temperature, 45min).