

**ULK1 (Phospho Ser555) rabbit pAb**

<b>Catalog No :</b>	YP1542
<b>Reactivity :</b>	Human;Mouse
<b>Applications :</b>	WB
<b>Target :</b>	ULK1
<b>Fields :</b>	>>Mitophagy - animal;>>Autophagy - animal;>>mTOR signaling pathway;>>AMPK signaling pathway;>>Longevity regulating pathway;>>Alzheimer disease;>>Amyotrophic lateral sclerosis;>>Huntington disease;>>Spinocerebellar ataxia;>>Pathways of neurodegeneration - multiple diseases
<b>Gene Name :</b>	ULK1 KIAA0722
<b>Protein Name :</b>	ULK1 (Ser555)
<b>Human Gene Id :</b>	8408
<b>Human Swiss Prot No :</b>	O75385
<b>Mouse Gene Id :</b>	22241
<b>Mouse Swiss Prot No :</b>	O70405
<b>Immunogen :</b>	Synthesized phospho peptide around human ULK1 (Ser555)
<b>Specificity :</b>	This antibody detects endogenous levels of Human Mouse ULK1 (phospho-Ser555)
<b>Formulation :</b>	Liquid in PBS containing 50% glycerol, 0.5% BSA and 0.02% sodium azide.
<b>Source :</b>	Polyclonal, Rabbit,IgG
<b>Dilution :</b>	WB 1:1000-2000
<b>Purification :</b>	The antibody was affinity-purified from rabbit serum by affinity-chromatography

using specific immunogen.

---

**Concentration :** 1 mg/ml

---

**Storage Stability :** -15°C to -25°C/1 year(Do not lower than -25°C)

---

**Observed Band :** 115kD

---

**Cell Pathway :** Regulation of autophagy;mTOR;

---

**Function :** catalytic activity:ATP + a protein = ADP + a phosphoprotein.,function:Involved in axon growth. Plays an essential role in neurite extension of cerebellar granule cells.,similarity:Belongs to the protein kinase superfamily. Ser/Thr protein kinase family. APG1/unc-51/ULK1 subfamily.,similarity:Contains 1 protein kinase domain.,subunit:Interacts with GABARAP and GABARAPL2.,tissue specificity:Ubiquitously expressed. Detected in the following adult tissues: skeletal muscle, heart, pancreas, brain, placenta, liver, kidney, and lung.,

---

**Subcellular Location :** Cytoplasm, cytosol . Preautophagosomal structure . Under starvation conditions, is localized to punctate structures primarily representing the isolation membrane that sequesters a portion of the cytoplasm resulting in the formation of an autophagosome. .

---

**Expression :** Ubiquitously expressed. Detected in the following adult tissues: skeletal muscle, heart, pancreas, brain, placenta, liver, kidney, and lung.

---

**Tag :** orthogonal

---

**Sort :** 1

---

**No4 :** 1

---

**Host :** Rabbit

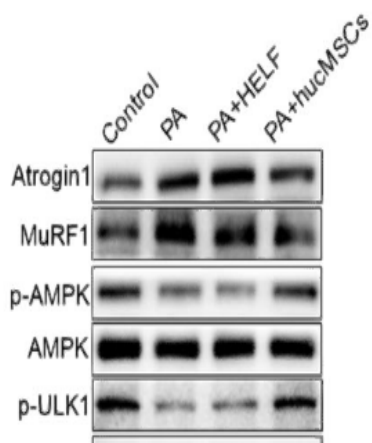
---

**Modifications :** Phospho

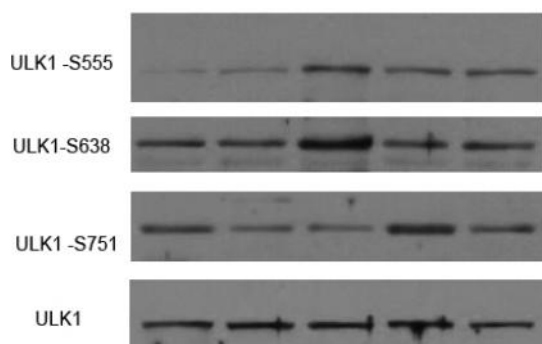
---

**Products Images**

**(A)**



Mesenchymal stromal cells ameliorate diabetes-induced muscle atrophy through exosomes by enhancing AMPK/ULK1-mediated autophagy *Journal of Cachexia Sarcopenia and Muscle* Li Chen  
WB Mouse tibialis anterior (TA) muscle



Western Blot analysis of various cell lysis(provided by our customer). Primary Antibody was diluted at 1:1000. Secondary antibody(catalog#:RS23920 was diluted at 1:10000