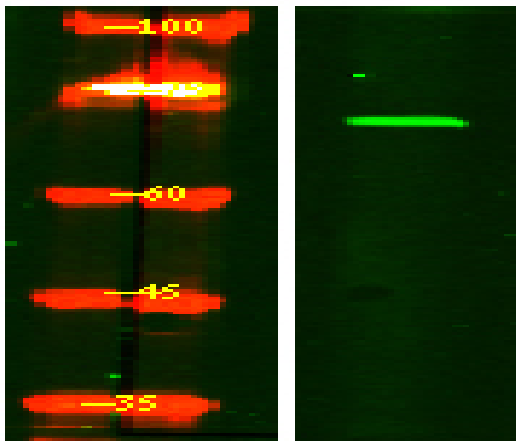


FRS2- α (Phospho Tyr196) rabbit pAb

Catalog No :	YP1345
Reactivity :	Human;Mouse
Applications :	WB
Target :	FRS2
Fields :	>>Thermogenesis;>>Neurotrophin signaling pathway;>>Proteoglycans in cancer
Gene Name :	FRS2
Protein Name :	FRS2- α (Tyr196)
Human Gene Id :	10818
Human Swiss Prot No :	Q8WU20
Mouse Gene Id :	327826
Mouse Swiss Prot No :	Q8C180
Immunogen :	Synthesized phospho peptide around human FRS2- α (Tyr196)
Specificity :	This antibody detects endogenous levels of Human Mouse FRS2- α (phospho-Tyr196)
Formulation :	Liquid in PBS containing 50% glycerol, 0.5% BSA and 0.02% sodium azide.
Source :	Polyclonal, Rabbit,IgG
Dilution :	WB 1:1000-2000
Purification :	The antibody was affinity-purified from rabbit serum by affinity-chromatography using specific immunogen.
Concentration :	1 mg/ml

Storage Stability :	-15°C to -25°C/1 year(Do not lower than -25°C)
Observed Band :	65kD
Cell Pathway :	Neurotrophin;
Function :	<p>function:Adapter protein that links FGR and NGF receptors to downstream signaling pathways. Involved in the activation of MAP kinases. Modulates signaling via SHC1 by competing for a common binding site on NTRK1.,PTM:Phosphorylated on tyrosine residues upon stimulation by NGF.,PTM:Ubiquitinated when tyrosine phosphorylated and in a complex with GRB2. The unphosphorylated form is not subject to ubiquitination.,sequence caution:Translated as stop.,similarity:Contains 1 IRS-type PTB domain.,subcellular location:Cytoplasmic, membrane-bound.,subunit:Part of a complex containing FRS2, GRB2 and SOS1. Part of a complex containing GRB2 and CBL. Binds RET (By similarity). Binds FGFR1, SUC1, NTRK1, NTRK2, NTRK3 and SRC. The tyrosine-phosphorylated protein binds the SH2 domains of GRB2 and PTPN11.,tissue specificity:Highly expressed in heart, brain, spleen, lung, liver, skeletal muscle, kidney and t</p>
Subcellular Location :	Endomembrane system. Cytoplasmic, membrane-bound.
Expression :	Highly expressed in heart, brain, spleen, lung, liver, skeletal muscle, kidney and testis.
Tag :	orthogonal
Sort :	6309
No4 :	1
Host :	Rabbit
Modifications :	Phospho

Products Images



Western Blot analysis of Hela treated or untreated by LPS lysis, using primary antibody at 1:1000 dilution. Secondary antibody(catalog#:RS23920) was diluted at 1:10000