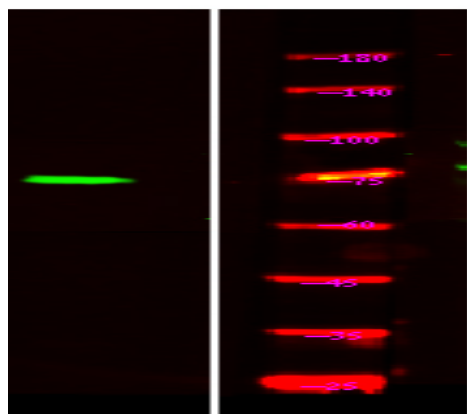


TORC1/CRTC1 (Phospho Ser151) rabbit pAb

Catalog No :	YP1534
Reactivity :	Human;Rat;Mouse;
Applications :	WB
Target :	TORC1
Fields :	>>Human T-cell leukemia virus 1 infection
Gene Name :	CRTC1 KIAA0616 MECT1 TORC1 WAMTP1
Protein Name :	TORC1/CRTC1 (Ser151)
Human Gene Id :	23373
Human Swiss Prot No :	Q6UUV9
Mouse Gene Id :	382056
Mouse Swiss Prot No :	Q68ED7
Rat Gene Id :	684527
Rat Swiss Prot No :	Q157S1
Immunogen :	Synthesized phospho peptide around human TORC1 and CRTC1 (Ser151)
Specificity :	This antibody detects endogenous levels of Human TORC1 or CRTC1 (phospho-Ser151)
Formulation :	Liquid in PBS containing 50% glycerol, 0.5% BSA and 0.02% sodium azide.
Source :	Polyclonal, Rabbit,IgG
Dilution :	WB 1:1000-2000

Purification :	The antibody was affinity-purified from rabbit serum by affinity-chromatography using specific immunogen.
Concentration :	1 mg/ml
Storage Stability :	-15°C to -25°C/1 year(Do not lower than -25°C)
Observed Band :	70kD
Function :	disease:A chromosomal aberration involving CRTC1 is found in mucoepidermoid carcinomas, benign Warthin tumors and clear cell hidradenomas. Translocation t(11;19)(q21;p13) with MAML2. The fusion protein consists of the N-terminus of CRTC1 joined to the C-terminus of MAML2. The reciprocal fusion protein consisting of the N-terminus of MAML2 joined to the C-terminus of CRTC1 has been detected in a small number of mucoepidermoid carcinomas.,function:Transcriptional coactivator for CREB1 which activates transcription through both consensus and variant cAMP response element (CRE) sites. Acts as a coactivator, in the SIK/TORC signaling pathway, being active when dephosphorylated and acts independently of CREB1 'Ser-133' phosphorylation. Enhances the interaction of CREB1 with TAF4. Regulates the expression of specific CREB-activated genes such as the steroidogenic gene, StAR. Potent coactivator
Subcellular Location :	Cytoplasm . Nucleus . Cytoplasmic when phosphorylated by SIK or AMPK and when sequestered by 14-3-3 proteins (PubMed:16817901). Translocated to the nucleus on Ser-151 dephosphorylation, instigated by a number of factors including calcium ion and cAMP levels (PubMed:15589160). Light stimulation triggers a nuclear accumulation in the suprachiasmatic nucleus (SCN) of the brain (By similarity). .
Expression :	Highly expressed in adult and fetal brain. Located to specific regions such as the prefrontal cortex and cerebellum. Very low expression in other tissues such as heart, spleen, lung, skeletal muscle, salivary gland, ovary and kidney.
Tag :	orthogonal
Sort :	17298
No4 :	1
Host :	Rabbit
Modifications :	Phospho

Products Images



Western Blot analysis of HeLa treated or untreated by LPS lysis, using primary antibody at 1:1000 dilution. Secondary antibody(catalog#:RS23920) was diluted at 1:10000