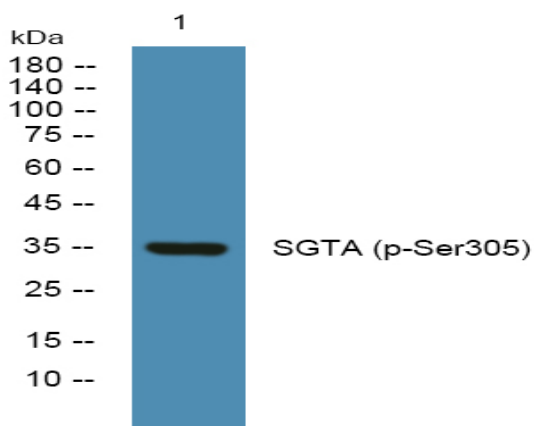


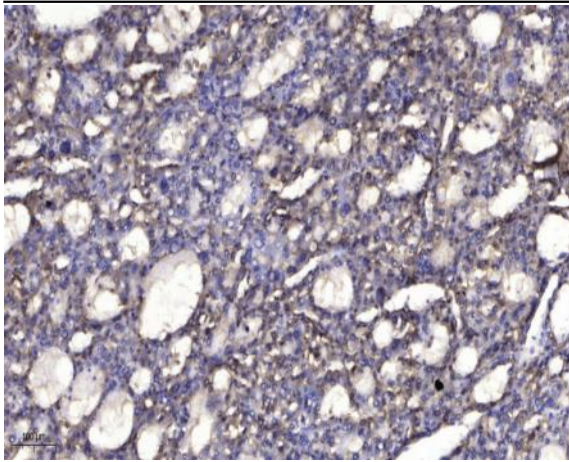
SGTA (Phospho Ser305) rabbit pAb

Catalog No :	YP1487
Reactivity :	Human;Rat;Mouse;
Applications :	WB;ELISA;IHC
Target :	SGTA
Gene Name :	SGTA SGT SGT1
Protein Name :	SGTA (Ser305)
Human Gene Id :	6449
Human Swiss Prot No :	O43765
Mouse Gene Id :	52551
Mouse Swiss Prot No :	Q8BJU0
Rat Gene Id :	64667
Rat Swiss Prot No :	O70593
Immunogen :	Synthesized phospho peptide around human SGTA (Ser305)
Specificity :	This antibody detects endogenous levels of Human SGTA (phospho-Ser305)
Formulation :	Liquid in PBS containing 50% glycerol, 0.5% BSA and 0.02% sodium azide.
Source :	Polyclonal, Rabbit,IgG
Dilution :	WB 1:500-2000;IHC 1:50-300; ELISA 2000-20000
Purification :	The antibody was affinity-purified from rabbit serum by affinity-chromatography using specific immunogen.

Concentration :	1 mg/ml
Storage Stability :	-15°C to -25°C/1 year(Do not lower than -25°C)
Observed Band :	35kD
Subcellular Location :	Cytoplasm . Nucleus . Co-localizes with HSP90AB1 in the cytoplasm. Increased nuclear accumulation seen during cell apoptosis. .
Expression :	Ubiquitous.
Sort :	16283
No4 :	1
Host :	Rabbit
Modifications :	Phospho

Products Images





Immunohistochemical analysis of paraffin-embedded human liver cancer. 1, Antibody was diluted at 1:200(4° overnight). 2, Tris-EDTA,pH9.0 was used for antigen retrieval. 3,Secondary antibody was diluted at 1:200(room temperature, 45min).