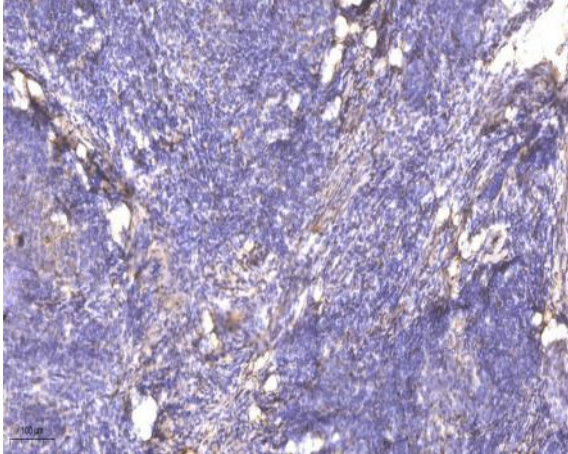


SGK3 (Phospho Thr320) rabbit pAb

Catalog No :	YP1486
Reactivity :	Human;Rat;Mouse;
Applications :	WB;IHC
Target :	SGK3
Fields :	>>FoxO signaling pathway;>>PI3K-Akt signaling pathway
Gene Name :	SGK3 CISK SGKL
Protein Name :	SGK3 (Thr320)
Human Gene Id :	100533105
Human Swiss Prot No :	Q96BR1
Mouse Gene Id :	170755
Mouse Swiss Prot No :	Q9ERE3
Rat Swiss Prot No :	Q8R4V0
Immunogen :	Synthesized phospho peptide around human SGK3 (Thr320)
Specificity :	This antibody detects endogenous levels of Human SGK3 (phospho-Thr320)
Formulation :	Liquid in PBS containing 50% glycerol, 0.5% BSA and 0.02% sodium azide.
Source :	Polyclonal, Rabbit,IgG
Dilution :	WB 1:500-2000;IHC 1:50-300
Purification :	The antibody was affinity-purified from rabbit serum by affinity-chromatography using specific immunogen.

Concentration :	1 mg/ml
Storage Stability :	-15°C to -25°C/1 year(Do not lower than -25°C)
Observed Band :	54kD
Background :	This gene is a member of the Ser/Thr protein kinase family and encodes a phosphoprotein with a PX (phox homology) domain. The protein phosphorylates several target proteins and has a role in neutral amino acid transport and activation of potassium and chloride channels. Alternate transcriptional splice variants, encoding different isoforms, have been characterized. [provided by RefSeq, Jul 2008],
Function :	<p>catalytic activity:ATP + a protein = ADP + a phosphoprotein.,enzyme regulation:Two specific sites, one in the kinase domain (Thr-320) and the other in the C-terminal regulatory region (Ser-486), need to be phosphorylated for its full activation.,function:Involved in the activation of potassium channels. Mediates cell IL-3-dependent survival signals.,similarity:Belongs to the protein kinase superfamily.,similarity:Belongs to the protein kinase superfamily. AGC Ser/Thr protein kinase family.,similarity:Contains 1 AGC-kinase C-terminal domain.,similarity:Contains 1 protein kinase domain.,similarity:Contains 1 PX (phox homology) domain.,subcellular location:Localized in vesicle-like structures and in the early endosome.,tissue specificity:Expressed in most tissues with highest levels in pancreas, kidney liver, heart and brain and lower levels in lung, placenta and skeletal muscle.,</p>
Subcellular Location :	Cytoplasmic vesicle . Early endosome. Recycling endosome. Endosomal localization is a prerequisite for complete kinase activity. It is essential for its colocalization with the kinase responsible for phosphorylating Ser-486 thus allowing PDPK1 phosphorylation of Thr-320 resulting in complete activation of SGK3. Localized in vesicle-like structures and in the early endosome. Colocalizes with SLC9A3/NHE3 in the recycling endosomes.
Expression :	Expressed in most tissues with highest levels in pancreas, kidney liver, heart and brain and lower levels in lung, placenta and skeletal muscle. Expression is higher in ER-positive breast tumors than ER-negative breast tumors.
Sort :	16276
No4 :	1
Host :	Rabbit
Modifications :	Phospho

Products Images



Immunohistochemical analysis of paraffin-embedded human cervical carcinoma. 1, Antibody was diluted at 1:200(4° overnight). 2, Tris-EDTA,pH9.0 was used for antigen retrieval. 3,Secondary antibody was diluted at 1:200(room temperature, 45min).