

**RPA32/RPA2 (Phospho Ser8) rabbit pAb**

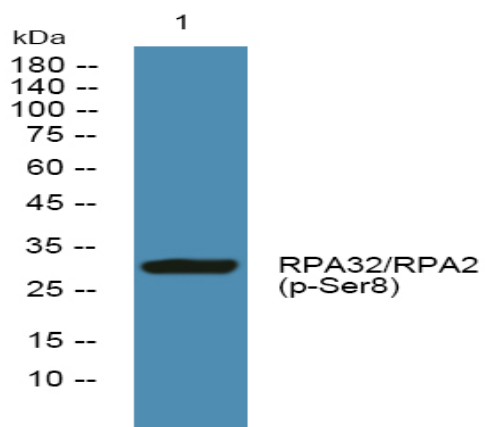
<b>Catalog No :</b>	YP1470
<b>Reactivity :</b>	Human;Rat;Mouse;
<b>Applications :</b>	WB
<b>Target :</b>	RFA2
<b>Fields :</b>	>>DNA replication;>>Nucleotide excision repair;>>Mismatch repair;>>Homologous recombination;>>Fanconi anemia pathway
<b>Gene Name :</b>	RPA2 REPA2 RPA32 RPA34
<b>Protein Name :</b>	RPA32/RPA2 (Ser8)
<b>Human Gene Id :</b>	6118
<b>Human Swiss Prot No :</b>	P15927
<b>Mouse Swiss Prot No :</b>	Q62193
<b>Rat Gene Id :</b>	59102
<b>Rat Swiss Prot No :</b>	Q63528
<b>Immunogen :</b>	Synthesized phospho peptide around human RPA32 and RPA2 (Ser8)
<b>Specificity :</b>	This antibody detects endogenous levels of Human RPA32 or RPA2 (phospho-Ser8)
<b>Formulation :</b>	Liquid in PBS containing 50% glycerol, 0.5% BSA and 0.02% sodium azide.
<b>Source :</b>	Polyclonal, Rabbit,IgG
<b>Dilution :</b>	WB 1:1000-2000
<b>Purification :</b>	The antibody was affinity-purified from rabbit serum by affinity-chromatography using specific immunogen.

---

<b>Concentration :</b>	1 mg/ml
<b>Storage Stability :</b>	-15°C to -25°C/1 year(Do not lower than -25°C)
<b>Observed Band :</b>	32kD
<b>Cell Pathway :</b>	DNA replication;Nucleotide excision repair;Mismatch repair;Homologous recombination;
<b>Function :</b>	function:Required for DNA recombination, repair and replication. The activity of RP-A is mediated by single-stranded DNA binding and protein interactions.,PTM:Phosphorylated in a cell-cycle-dependent manner (from the S phase until mitosis). Phosphorylated by ATR upon DNA damage, which promotes its translocation to nuclear foci. Can be phosphorylated in vitro by PRKDC/DNA-PK in the presence of Ku and DNA, and by CDC2.,subcellular location:Also present in PML nuclear bodies. Redistributes to discrete nuclear foci upon DNA damage.,subunit:Heterotrimer of 70, 32 and 14 kDa chains. The DNA-binding activity may reside exclusively on the 70 kDa subunit. Binds to SERTAD3/RBT1. Interacts with TIPIN.,
<b>Subcellular Location :</b>	Nucleus . Nucleus, PML body . Redistributes to discrete nuclear foci upon DNA damage in an ATR-dependent manner. .
<b>Expression :</b>	Kidney,Lung,Muscle,
<b>Sort :</b>	14590
<b>No4 :</b>	1
<b>Host :</b>	Rabbit
<b>Modifications :</b>	Phospho

---

## Products Images



Western blot analysis of lysates from Jurkat cells, primary antibody was diluted at 1:1000, 4° over night