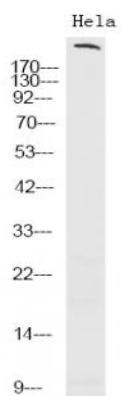


ROS1 (Phospho Tyr2274) rabbit pAb

Catalog No :	YP1469
Reactivity :	Human;Rat;Mouse;
Applications :	WB;IF
Target :	ROS1
Gene Name :	ROS1 MCF3 ROS
Protein Name :	ROS1 (Tyr2274)
Human Gene Id :	6098
Human Swiss Prot No :	P08922
Mouse Gene Id :	19886
Mouse Swiss Prot No :	Q78DX7
Rat Gene Id :	25346
Rat Swiss Prot No :	Q63132
Immunogen :	Synthesized phospho peptide around human ROS1 (Tyr2274)
Specificity :	This antibody detects endogenous levels of Human ROS1 (phospho-Tyr2274)
Formulation :	Liquid in PBS containing 50% glycerol, 0.5% BSA and 0.02% sodium azide.
Source :	Polyclonal, Rabbit,IgG
Dilution :	WB 1:1000-2000. IF 1:50-200
Purification :	The antibody was affinity-purified from rabbit serum by affinity-chromatography using specific immunogen.

Concentration :	1 mg/ml
Storage Stability :	-15°C to -25°C/1 year(Do not lower than -25°C)
Observed Band :	258kD
Background :	This proto-oncogene, highly-expressed in a variety of tumor cell lines, belongs to the sevenless subfamily of tyrosine kinase insulin receptor genes. The protein encoded by this gene is a type I integral membrane protein with tyrosine kinase activity. The protein may function as a growth or differentiation factor receptor. [provided by RefSeq, Jul 2008],
Function :	catalytic activity:ATP + a [protein]-L-tyrosine = ADP + a [protein]-L-tyrosine phosphate.,disease:A chromosomal aberration involving ROS1 is found in glioblastoma multiform (GBM). An homozygous deletion in chromosome 6q21 results in expression of a GOPC-ROS1 chimeric protein which has a constitutive receptor tyrosine kinase activity.,function:This is probably a cell growth or differentiation factor receptor with a tyrosine-protein kinase activity.,similarity:Belongs to the protein kinase superfamily. Tyr protein kinase family. Insulin receptor subfamily.,similarity:Contains 1 protein kinase domain.,similarity:Contains 9 fibronectin type-III domains.,
Subcellular Location :	Cell membrane ; Single-pass type I membrane protein .
Expression :	Expressed in brain. Expression is increased in primary gliomas.
Sort :	6
No4 :	1
Host :	Rabbit
Modifications :	Phospho

Products Images



Western Blot analysis of HeLa using primary antibody at 1:1000 dilution 4 °C, overnight. Secondary antibody(catalog#:RS23920) was diluted at 1:10000 25 °C [?]1.5hours