

**RIP3 (Phospho Ser227) rabbit pAb**

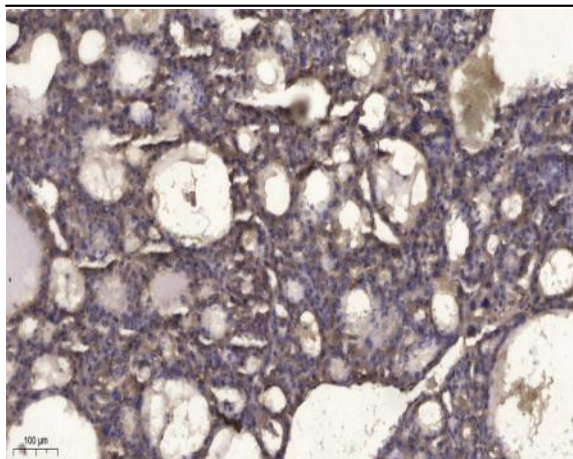
<b>Catalog No :</b>	YP1468
<b>Reactivity :</b>	Human
<b>Applications :</b>	WB;ELISA;IHC
<b>Target :</b>	RIP3
<b>Fields :</b>	>>Necroptosis;>>NOD-like receptor signaling pathway;>>Cytosolic DNA-sensing pathway;>>TNF signaling pathway;>>Salmonella infection
<b>Gene Name :</b>	RIPK3 RIP3
<b>Protein Name :</b>	RIP3 (Ser227)
<b>Human Gene Id :</b>	11035
<b>Human Swiss Prot No :</b>	Q9Y572
<b>Mouse Swiss Prot No :</b>	Q9QZL0
<b>Rat Gene Id :</b>	246240
<b>Rat Swiss Prot No :</b>	Q9Z2P5
<b>Immunogen :</b>	Synthesized phospho peptide around human RIP3 (Ser227)
<b>Specificity :</b>	This antibody detects endogenous levels of Human RIP3 (phospho-Ser227)
<b>Formulation :</b>	Liquid in PBS containing 50% glycerol, 0.5% BSA and 0.02% sodium azide.
<b>Source :</b>	Polyclonal, Rabbit,IgG
<b>Dilution :</b>	WB 1:500-2000;IHC 1:50-300; ELISA 2000-20000
<b>Purification :</b>	The antibody was affinity-purified from rabbit serum by affinity-chromatography using specific immunogen.

---

<b>Concentration :</b>	1 mg/ml
<b>Storage Stability :</b>	-15°C to -25°C/1 year(Do not lower than -25°C)
<b>Observed Band :</b>	56-70kD
<b>Cell Pathway :</b>	Cytosolic DNA-sensing pathway;
<b>Background :</b>	<p>The product of this gene is a member of the receptor-interacting protein (RIP) family of serine/threonine protein kinases, and contains a C-terminal domain unique from other RIP family members. The encoded protein is predominantly localized to the cytoplasm, and can undergo nucleocytoplasmic shuttling dependent on novel nuclear localization and export signals. It is a component of the tumor necrosis factor (TNF) receptor-I signaling complex, and can induce apoptosis and weakly activate the NF-kappaB transcription factor. [provided by RefSeq, Jul 2008],</p>
<b>Function :</b>	<p>catalytic activity:ATP + a protein = ADP + a phosphoprotein.,function:Promotes apoptosis.,PTM:Autophosphorylated.,similarity:Belongs to the protein kinase superfamily. TKL Ser/Thr protein kinase family.,similarity:Contains 1 protein kinase domain.,subunit:Binds TRAF2 and RIPK1 and is recruited to the TNFR-1 signaling complex.,tissue specificity:Highly expressed in the pancreas. Detected at lower levels in heart, placenta, lung and kidney. Isoform 3 is significantly increased in colon and lung cancers.,</p>
<b>Subcellular Location :</b>	Cytoplasm, cytosol . Nucleus . Mainly cytoplasmic. Present in the nucleus in response to influenza A virus (IAV) infection. .
<b>Expression :</b>	Highly expressed in the pancreas. Detected at lower levels in heart, placenta, lung and kidney. ; [Isoform 3]: Expression is significantly increased in colon and lung cancers.
<b>Sort :</b>	1
<b>No4 :</b>	1
<b>Host :</b>	Rabbit
<b>Modifications :</b>	Phospho

---

## Products Images



Immunohistochemical analysis of paraffin-embedded human liver cancer. 1, Antibody was diluted at 1:200(4° overnight). 2, Tris-EDTA,pH9.0 was used for antigen retrieval. 3,Secondary antibody was diluted at 1:200(room temperature, 45min).