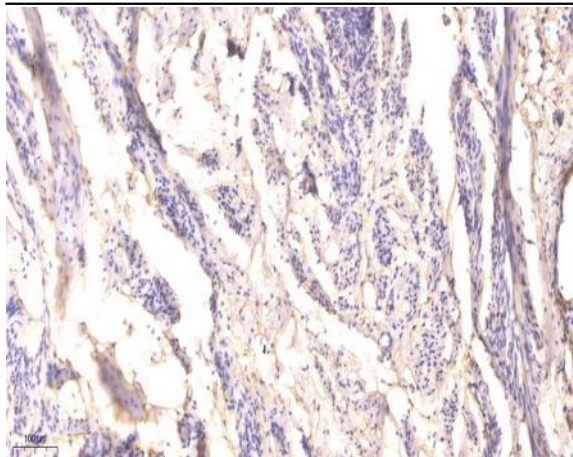


RIP (Phospho Ser166) rabbit pAb

Catalog No :	YP1467
Reactivity :	Human;Rat;Mouse;
Applications :	WB;IHC
Target :	RIP
Fields :	>>NF-kappa B signaling pathway;>>Apoptosis;>>Necroptosis;>>Toll-like receptor signaling pathway;>>NOD-like receptor signaling pathway;>>RIG-I-like receptor signaling pathway;>>Cytosolic DNA-sensing pathway;>>TNF signaling pathway;>>Alcoholic liver disease;>>Pathogenic Escherichia coli infection;>>Shigellosis;>>Salmonella infection;>>Hepatitis C;>>Human cytomegalovirus infection;>>Epstein-Barr virus infection;>>Human immunodeficiency virus 1 infection
Gene Name :	RIPK1 RIP RIP1
Protein Name :	RIP (Ser166)
Human Gene Id :	8737
Human Swiss Prot No :	Q13546
Mouse Gene Id :	19766
Mouse Swiss Prot No :	Q60855
Immunogen :	Synthesized phospho peptide around human RIP (Ser166)
Specificity :	This antibody detects endogenous levels of Human RIP (phospho-Ser166)
Formulation :	Liquid in PBS containing 50% glycerol, 0.5% BSA and 0.02% sodium azide.
Source :	Polyclonal, Rabbit,IgG
Dilution :	WB 1:500-2000;IHC 1:50-300

Purification :	The antibody was affinity-purified from rabbit serum by affinity-chromatography using specific immunogen.
Concentration :	1 mg/ml
Storage Stability :	-15°C to -25°C/1 year(Do not lower than -25°C)
Observed Band :	73kD
Cell Pathway :	Apoptosis_Inhibition;Apoptosis_Mitochondrial;Apoptosis_Overview;Toll_Like;RI G-I-like receptor;Cytosolic DNA-sensing pathway;
Function :	catalytic activity:ATP + a protein = ADP + a phosphoprotein.,function:Promotes apoptosis and activation of NF-kappa-B. Required for TNFRSF1A mediated activation of NF-kappa-B.,PTM:Autophosphorylated on serine and threonine residues.,PTM:Proteolytically cleaved by caspase-8 during TNF-induced apoptosis. Cleavage abolishes NF-kappa-B activation and enhances pro-apototic signaling through the TRADD-FADD interaction.,similarity:Belongs to the protein kinase superfamily. TKL Ser/Thr protein kinase family.,similarity:Contains 1 death domain.,similarity:Contains 1 protein kinase domain.,subunit:Binds to the death domain of TNFRSF6 and TRADD. Is recruited by TRADD to TNFRSF1A in a TNF-dependent process. Binds RIPK3, UBCE7IP1 isoform 3 (ZIN), EGFR, IKBKG, TRAF1, TRAF2 and TRAF3. Interacts with BNLF1. Interacts with SQSTM1 upon TNF-alpha stimulation. May interacts with MAVS/IPS1.,
Subcellular Location :	Cytoplasm . Cell membrane .
Expression :	Leukemic T-cell,T-cell,Umbilical vein endothelial cell,
Tag :	orthogonal
Sort :	1
No4 :	1
Host :	Rabbit
Modifications :	Phospho

Products Images



Immunohistochemical analysis of paraffin-embedded human cervical carcinoma. 1, Antibody was diluted at 1:200(4° overnight). 2, Tris-EDTA,pH9.0 was used for antigen retrieval. 3,Secondary antibody was diluted at 1:200(room temperature, 45min).