

Rad18 (Phospho Ser403) rabbit pAb

Catalog No :	YP1458
Reactivity :	Human;Rat;Mouse;
Applications :	WB;ELISA;IHC
Target :	Rad18
Gene Name :	RAD18 RNF73
Protein Name :	Rad18 (Ser403)
Human Gene Id :	56852
Human Swiss Prot No :	Q9NS91
Mouse Gene Id :	58186
Mouse Swiss Prot No :	Q9QXK2
Immunogen :	Synthesized phospho peptide around human Rad18 (Ser403)
Specificity :	This antibody detects endogenous levels of Human Rad18 (phospho-Ser403)
Formulation :	Liquid in PBS containing 50% glycerol, 0.5% BSA and 0.02% sodium azide.
Source :	Polyclonal, Rabbit,IgG
Dilution :	WB 1:500-2000;IHC 1:50-300; ELISA 2000-20000
Purification :	The antibody was affinity-purified from rabbit serum by affinity-chromatography using specific immunogen.
Concentration :	1 mg/ml
Storage Stability :	-15°C to -25°C/1 year(Do not lower than -25°C)

Observed Band : 56kD

Background : The protein encoded by this gene is highly similar to *S. cerevisiae* DNA damage repair protein Rad18. Yeast Rad18 functions through its interaction with Rad6, which is an ubiquitin-conjugating enzyme required for post-replication repair of damaged DNA. Similar to its yeast counterpart, this protein is able to interact with the human homolog of yeast Rad6 protein through a conserved ring-finger motif. Mutation of this motif results in defective replication of UV-damaged DNA and hypersensitivity to multiple mutagens. [provided by RefSeq, Jul 2008],

Function : function:E3 ubiquitin-protein ligase involved in postreplication repair of UV-damaged DNA. Postreplication repair functions in gap-filling of a daughter strand on replication of damaged DNA. Associates to the E2 ubiquitin conjugating enzyme UBE2B to form the UBE2B-RAD18 ubiquitin ligase complex involved in mono-ubiquitination of DNA-associated PCNA on 'Lys-164'. Has ssDNA binding activity.,pathway:Protein modification; protein ubiquitination.,similarity:Belongs to the RAD18 family.,similarity:Contains 1 RING-type zinc finger.,similarity:Contains 1 SAP domain.,subunit:Interacts with UBE2A and UBE2B. Interacts with SHPRH.,

Subcellular Location : Nucleus . Cytoplasm, cytoskeleton, microtubule organizing center, centrosome . Associates with chromatin (PubMed:25931565). Colocalizes with SLF1 in the nucleus and to centrosomes (PubMed:15632077). Relocalizes with SLF1 to nuclear foci in response to DNA damage (PubMed:22036607). Accumulates with the SLF1-SLF2 and SMC5-SMC6 complexes at replication-coupled DNA interstrand repair and DNA double-strand breaks (DSBs) sites on chromatin in a ubiquitin-dependent manner (PubMed:25931565). .

Expression : Epithelium,Liver,Placenta,

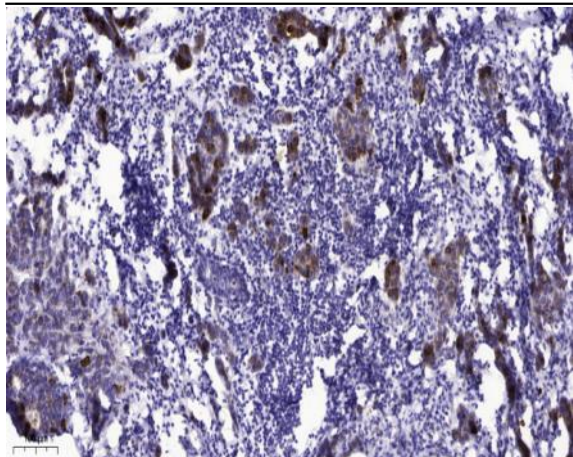
Sort : 13746

No4 : 1

Host : Rabbit

Modifications : Phospho

Products Images



Immunohistochemical analysis of paraffin-embedded human Breast cancer. 1, Antibody was diluted at 1:200(4° overnight). 2, Tris-EDTA,pH9.0 was used for antigen retrieval. 3,Secondary antibody was diluted at 1:200(room temperature, 45min).