

**EpCAM (PT0290R) PT® Rabbit mAb**

<b>Catalog No :</b>	YM8166
<b>Reactivity :</b>	Human; Mouse; Rat;
<b>Applications :</b>	WB;IHC;IF;IP;ELISA
<b>Protein Name :</b>	EPCAM
<b>Sequence :</b>	Epithelial cell adhesion molecule
<b>Human Gene Id :</b>	4072
<b>Human Swiss Prot No :</b>	P16422
<b>Mouse Gene Id :</b>	17075
<b>Mouse Swiss Prot No :</b>	Q99JW5
<b>Specificity :</b>	endogenous
<b>Formulation :</b>	PBS, 50% glycerol, 0.05% Proclin 300, 0.05%BSA
<b>Source :</b>	Monoclonal, rabbit, IgG, Kappa
<b>Dilution :</b>	IHC 1:200-1:1000,WB 1:1000-1:5000,IF 1:200-1:1000,ELISA 1:5000-1:20000,IP 1:50-1:200,
<b>Purification :</b>	Protein A
<b>Storage Stability :</b>	-15°C to -25°C/1 year(Do not lower than -25°C)
<b>Molecularweight :</b>	35kD
<b>Observed Band :</b>	40kD
<b>Background :</b>	This gene encodes a carcinoma-associated antigen and is a member of a family that includes at least two type I membrane proteins. This antigen is expressed on most normal epithelial cells and gastrointestinal carcinomas and functions as a

homotypic calcium-independent cell adhesion molecule. The antigen is being used as a target for immunotherapy treatment of human carcinomas. Mutations in this gene result in congenital tufting enteropathy. [provided by RefSeq, Dec 2008],

**Subcellular Location :**

Membrane

**Expression :**

Highly and selectively expressed by undifferentiated rather than differentiated embryonic stem cells (ESC). Levels rapidly diminish as soon as ESC's differentiate (at protein levels). Expressed in almost all epithelial cell membranes but not on mesodermal or neural cell membranes. Found on the surface of adenocarcinoma.

**Tag :**

hot,recombinant

**Sort :**

5593

**No4 :**

1

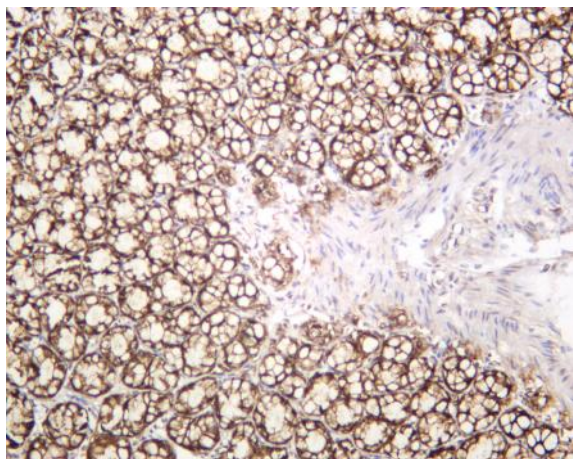
**Host :**

Rabbit

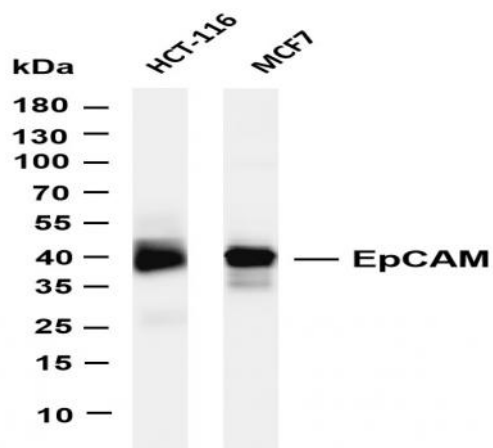
**Modifications :**

Unmodified

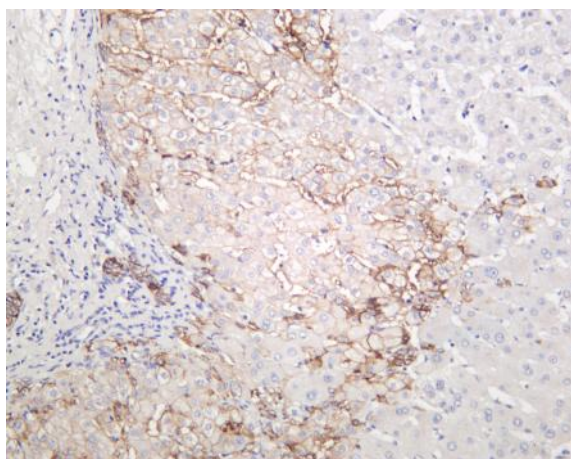
## Products Images



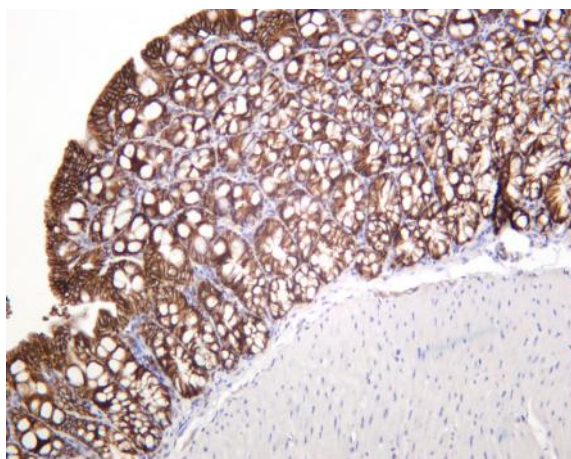
Rat colon was stained with anti-EpCAM (PT0290R) rabbit antibody



Various whole cell lysates were separated by 4-20% SDS-PAGE, and the membrane was blotted with anti-EpCAM (PT0290R) antibody. The HRP-conjugated Goat anti-Rabbit IgG(H + L) antibody was used to detect the antibody. Lane 1: HCT-116 Lane 2: MCF7 Predicted band size: 35kDa Observed band size: 40kDa



Human liver was stained with anti-EpCAM (PT0290R) rabbit antibody



Mouse colon was stained with anti-EpCAM (PT0290R) rabbit antibody