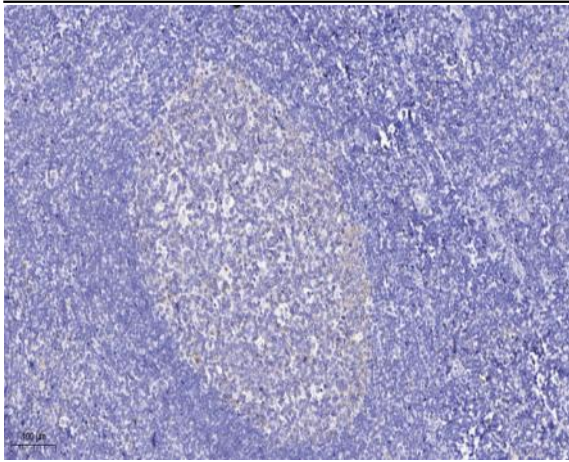


PPIG (Phospho Ser376) rabbit pAb

Catalog No :	YP1448
Reactivity :	Human;Mouse;Rat
Applications :	WB;IHC
Target :	PPIG
Gene Name :	PPIG
Protein Name :	PPIG (Ser376)
Human Gene Id :	9360
Human Swiss Prot No :	Q13427
Mouse Gene Id :	228005
Mouse Swiss Prot No :	A2AR02
Rat Gene Id :	83624
Rat Swiss Prot No :	O55035
Immunogen :	Synthesized phospho peptide around human PPIG (Ser376)
Specificity :	This antibody detects endogenous levels of Human Mouse Rat PPIG (phospho-Ser376)
Formulation :	Liquid in PBS containing 50% glycerol, 0.5% BSA and 0.02% sodium azide.
Source :	Polyclonal, Rabbit,IgG
Dilution :	WB 1:500-2000;IHC 1:50-300
Purification :	The antibody was affinity-purified from rabbit serum by affinity-chromatography using specific immunogen.

Concentration :	1 mg/ml
Storage Stability :	-15°C to -25°C/1 year(Do not lower than -25°C)
Observed Band :	82kD
Function :	<p>catalytic activity:Peptidylproline (omega=180) = peptidylproline (omega=0).,domain:The RS domain is required for the interaction with the phosphorylated C-terminal domain of RNA polymerase II.,enzyme regulation:Cyclosporin A (CsA)-sensitive.,function:PPIases accelerate the folding of proteins.,function:PPIases accelerate the folding of proteins. It catalyzes the cis-trans isomerization of proline imidic peptide bonds in oligopeptides.,function:PPIases accelerate the folding of proteins. It catalyzes the cis-trans isomerization of proline imidic peptide bonds in oligopeptides. May be implicated in the folding, transport, and assembly of proteins. May play an important role in the regulation of pre-mRNA splicing.,PTM:Phosphorylated upon DNA damage, probably by ATM or ATR.,similarity:Belongs to the cyclophilin-type PPIase family.,similarity:Contains 1 PPIase cyclophilin-type domain.,subcell</p>
Subcellular Location :	Nucleus matrix . Nucleus speckle . Colocalizes with RNA splicing factors at nuclear speckles. .
Expression :	Ubiquitous.
Sort :	12952
No4 :	1
Host :	Rabbit
Modifications :	Phospho

Products Images



Immunohistochemical analysis of paraffin-embedded human tonsil. 1, Antibody was diluted at 1:200(4° overnight). 2, Tris-EDTA,pH9.0 was used for antigen retrieval. 3,Secondary antibody was diluted at 1:200(room temperature, 45min).