

**PI3 Kinase Class III (Phospho Ser249) rabbit pAb**

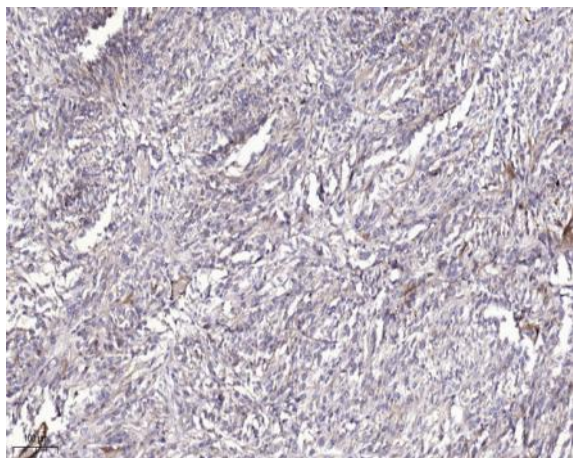
<b>Catalog No :</b>	YP1435
<b>Reactivity :</b>	Human;Rat;Mouse;
<b>Applications :</b>	WB;ELISA;IHC
<b>Target :</b>	PI 3 Kinase Class 3
<b>Fields :</b>	>>Inositol phosphate metabolism;>>Metabolic pathways;>>Phosphatidylinositol signaling system;>>Autophagy - other;>>Autophagy - animal;>>Phagosome;>>Apelin signaling pathway;>>Alzheimer disease;>>Amyotrophic lateral sclerosis;>>Huntington disease;>>Spinocerebellar ataxia;>>Pathways of neurodegeneration - multiple diseases;>>Shigellosis;>>Salmonella infection;>>Tuberculosis;>>Kaposi sarcoma-associated herpesvirus infection
<b>Gene Name :</b>	PIK3C3 VPS34
<b>Protein Name :</b>	PI3 Kinase Class III (Ser249)
<b>Human Gene Id :</b>	5289
<b>Human Swiss Prot No :</b>	Q8NEB9
<b>Mouse Gene Id :</b>	225326
<b>Mouse Swiss Prot No :</b>	Q6PF93
<b>Rat Gene Id :</b>	65052
<b>Rat Swiss Prot No :</b>	O88763
<b>Immunogen :</b>	Synthesized phospho peptide around human PI3 Kinase Class III (Ser249)
<b>Specificity :</b>	This antibody detects endogenous levels of Human PI3 Kinase Class III (phospho-Ser249)
<b>Formulation :</b>	Liquid in PBS containing 50% glycerol, 0.5% BSA and 0.02% sodium azide.

---

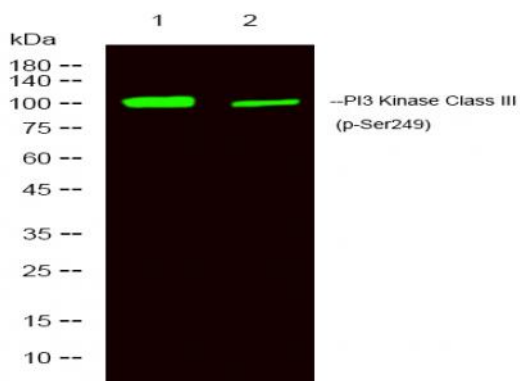
<b>Source :</b>	Polyclonal, Rabbit,IgG
<b>Dilution :</b>	WB 1:500-2000;IHC 1:50-300; ELISA 2000-20000
<b>Purification :</b>	The antibody was affinity-purified from rabbit serum by affinity-chromatography using specific immunogen.
<b>Concentration :</b>	1 mg/ml
<b>Storage Stability :</b>	-15°C to -25°C/1 year(Do not lower than -25°C)
<b>Observed Band :</b>	100kD
<b>Cell Pathway :</b>	Inositol phosphate metabolism;Phosphatidylinositol signaling system;Regulation of autophagy;
<b>Function :</b>	<p>catalytic activity:ATP + 1-phosphatidyl-1D-myo-inositol = ADP + 1-phosphatidyl-1D-myo-inositol 3-phosphate.,cofactor:Manganese.,function:Catalytic subunit of the PI3K complex. Involved in the transport of lysosomal enzyme precursors to lysosomes.,similarity:Belongs to the PI3/PI4-kinase family.,similarity:Contains 1 PI3K/PI4K domain.,subunit:Probably forms a complex with AMBRA1 and BECN1 (By similarity). Heterodimer. This subunit, part of a complex composed of regulatory and catalytic subunits, associates with regulatory subunit PIK3R4.,tissue specificity:Ubiquitously expressed, with a highest expression in skeletal muscle.,</p>
<b>Subcellular Location :</b>	Midbody . Late endosome . Cytoplasmic vesicle, autophagosome . As component of the PI3K complex I localized to pre-autophagosome structures. As component of the PI3K complex II localized predominantly to endosomes (PubMed:14617358). Localizes also to discrete punctae along the ciliary axoneme and to the base of the ciliary axoneme (By similarity). .
<b>Expression :</b>	Ubiquitously expressed, with a highest expression in skeletal muscle.
<b>Tag :</b>	orthogonal
<b>Sort :</b>	12684
<b>No4 :</b>	1
<b>Host :</b>	Rabbit
<b>Modifications :</b>	Phospho

---

## Products Images



Immunohistochemical analysis of paraffin-embedded human Colon cancer. 1, Antibody was diluted at 1:200(4 ° overnight). 2, Tris-EDTA,pH9.0 was used for antigen retrieval. 3,Secondary antibody was diluted at 1:200(room temperature, 45min).



Western Blot analysis of 1 Jurkat treated with LPS, 2 Jurkat ,using primary antibody at 1:1000 dilution. Secondary antibody(catalog#:RS23920) was diluted at 1:10000