

## Nuclear Receptor NR4A1 (Phospho Ser351) Antibody

<b>Catalog No :</b>	YP1248
<b>Reactivity :</b>	Human;Mouse;Rat
<b>Applications :</b>	WB;ELISA
<b>Target :</b>	Nur77
<b>Fields :</b>	>>MAPK signaling pathway;>>PI3K-Akt signaling pathway;>>Aldosterone synthesis and secretion;>>Cortisol synthesis and secretion;>>Cushing syndrome
<b>Gene Name :</b>	NR4A1 GFRP1 HMR NAK1
<b>Protein Name :</b>	Nuclear Receptor NR4A1 (Phospho-Ser351)
<b>Human Gene Id :</b>	3164
<b>Human Swiss Prot No :</b>	P22736
<b>Immunogen :</b>	Synthesized pospho peptide derived from human Nuclear Receptor NR4A1 (Phospho-Ser351)
<b>Specificity :</b>	This antibody detects endogenous pospho levels of human Nuclear Receptor NR4A1 (Phospho-Ser351)
<b>Formulation :</b>	Liquid in PBS containing 50% glycerol, 0.5% BSA and 0.02% sodium azide.
<b>Source :</b>	Polyclonal, Rabbit,IgG
<b>Dilution :</b>	WB 1:500-2000, ELISA(peptide)1:5000-20000
<b>Purification :</b>	The antibody was affinity-purified from mouse ascites by affinity-chromatography using specific immunogen.
<b>Concentration :</b>	1 mg/ml
<b>Storage Stability :</b>	-15°C to -25°C/1 year(Do not lower than -25°C)

**Observed Band :** 77kD

**Background :** This gene encodes a member of the steroid-thyroid hormone-retinoid receptor superfamily. Expression is induced by phytohemagglutinin in human lymphocytes and by serum stimulation of arrested fibroblasts. The encoded protein acts as a nuclear transcription factor. Translocation of the protein from the nucleus to mitochondria induces apoptosis. Multiple transcript variants encoding different isoforms have been found for this gene. [provided by RefSeq, Jan 2011],

**Function :** function:Orphan nuclear receptor.,induction:By growth-stimulating agents.,similarity:Belongs to the nuclear hormone receptor family.,similarity:Belongs to the nuclear hormone receptor family. NR4 subfamily.,similarity:Contains 1 nuclear receptor DNA-binding domain.,subunit:Interacts with GADD45GIP1.,tissue specificity:Fetal muscle and adult liver, brain and thyroid.,

**Subcellular Location :** Nucleus . Cytoplasm . Mitochondrion . Nuclear export to the cytoplasm is XPO1-mediated and positively regulated by IFI27 (PubMed:22427340). Translocation to the mitochondrion upon interaction with RXRA and upon the presence of 9-cis retinoic acid (PubMed:17761950). .

**Expression :** Fetal muscle and adult liver, brain and thyroid.

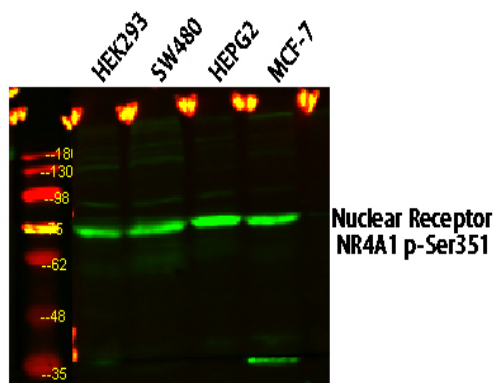
**Sort :** 10990

**No4 :** 1

**Host :** Rabbit

**Modifications :** Phospho

## Products Images



Western blot analysis of various lysates, primary antibody was diluted at 1:1000, 4° over night, secondary antibody(cat: RS23920)was diluted at 1:10000, 37° 1hour.