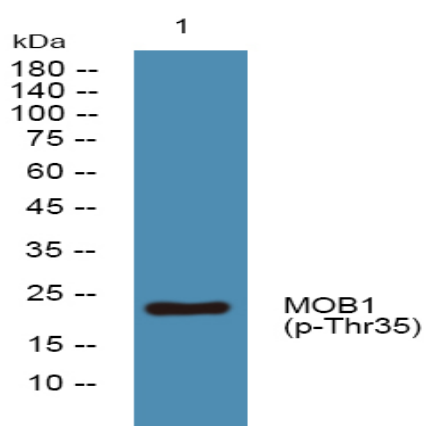


MOB1 (Phospho Thr35) rabbit pAb

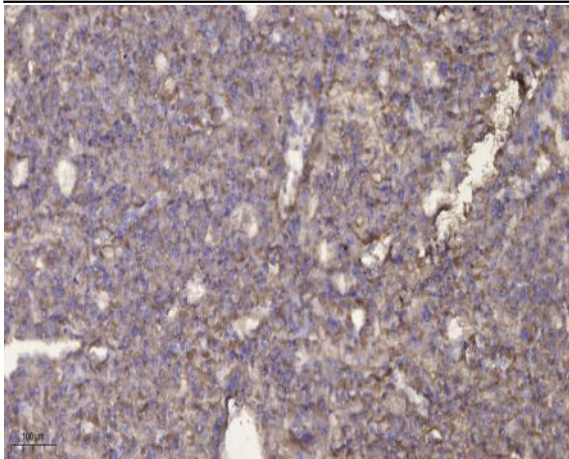
Catalog No :	YP1406
Reactivity :	Human;Mouse;Rat
Applications :	WB;IHC
Target :	MOB1
Fields :	>>Hippo signaling pathway;>>Hippo signaling pathway - multiple species
Protein Name :	MOB1 (Thr35)
Human Gene Id :	55233
Human Swiss Prot No :	Q9H8S9
Mouse Gene Id :	232157
Mouse Swiss Prot No :	Q921Y0
Rat Gene Id :	297387
Rat Swiss Prot No :	Q3T1J9
Immunogen :	Synthesized phospho peptide around human MOB1 (Thr35)
Specificity :	This antibody detects endogenous levels of Human Mouse Rat MOB1 (phospho-Thr35)
Formulation :	Liquid in PBS containing 50% glycerol, 0.5% BSA and 0.02% sodium azide.
Source :	Polyclonal, Rabbit,IgG
Dilution :	WB 1:500-2000;IHC 1:50-300
Purification :	The antibody was affinity-purified from rabbit serum by affinity-chromatography using specific immunogen.

Concentration :	1 mg/ml
Storage Stability :	-15°C to -25°C/1 year(Do not lower than -25°C)
Observed Band :	23kD
Background :	The protein encoded by this gene is a component of the Hippo signaling pathway, which controls organ size and tumor growth by enhancing apoptosis. Loss of the encoded protein results in cell proliferation and cancer formation. The encoded protein is also involved in the control of microtubule stability during cytokinesis. Several transcript variants encoding different isoforms have been found for this gene. [provided by RefSeq, Nov 2015],
Function :	function:Stimulates the kinase activity of STK38 and STK38L.,PTM:Phosphorylated.,similarity:Belongs to the MOB1/phocein family.,subunit:Binds STK38 and STK38L.,
Subcellular Location :	cytosol,extracellular exosome,
Expression :	Adrenal gland, bone marrow, brain, placenta, prostate, salivary gland, skeletal muscle, testis, thymus, thyroid gland, heart, spinal cord, fetal brain and fetal liver.
Sort :	9732
No4 :	1

Products Images



Western blot analysis of lysates from SW480 cells, primary antibody was diluted at 1:1000, 4° over night



Immunohistochemical analysis of paraffin-embedded human liver cancer. 1, Antibody was diluted at 1:200(4° overnight). 2, Tris-EDTA,pH9.0 was used for antigen retrieval. 3,Secondary antibody was diluted at 1:200(room temperature, 45min).