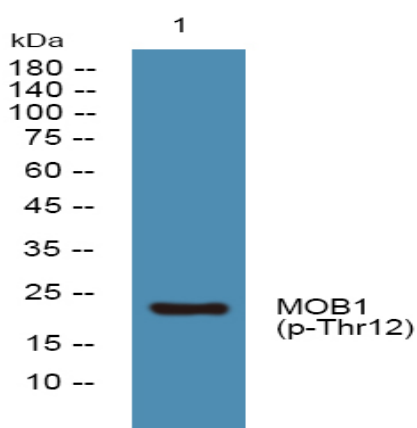


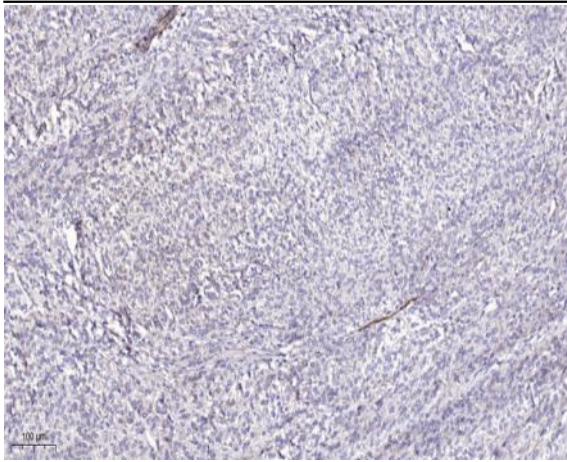
**MOB1 (Phospho Thr12) rabbit pAb**

<b>Catalog No :</b>	YP1405
<b>Reactivity :</b>	Human;Mouse;Rat
<b>Applications :</b>	WB;ELISA;IHC
<b>Target :</b>	MOB1
<b>Fields :</b>	>>Hippo signaling pathway;>>Hippo signaling pathway - multiple species
<b>Protein Name :</b>	MOB1 (Thr12)
<b>Human Gene Id :</b>	55233
<b>Human Swiss Prot No :</b>	Q9H8S9
<b>Mouse Gene Id :</b>	232157
<b>Mouse Swiss Prot No :</b>	Q921Y0
<b>Rat Gene Id :</b>	297387
<b>Rat Swiss Prot No :</b>	Q3T1J9
<b>Immunogen :</b>	Synthesized phospho peptide around human MOB1 (Thr12)
<b>Specificity :</b>	This antibody detects endogenous levels of Human Mouse Rat MOB1 (phospho-Thr12)
<b>Formulation :</b>	Liquid in PBS containing 50% glycerol, 0.5% BSA and 0.02% sodium azide.
<b>Source :</b>	Polyclonal, Rabbit,IgG
<b>Dilution :</b>	WB 1:500-2000;IHC 1:50-300; ELISA 2000-20000
<b>Purification :</b>	The antibody was affinity-purified from rabbit serum by affinity-chromatography using specific immunogen.

<b>Concentration :</b>	1 mg/ml
<b>Storage Stability :</b>	-15°C to -25°C/1 year(Do not lower than -25°C)
<b>Observed Band :</b>	23kD
<b>Background :</b>	The protein encoded by this gene is a component of the Hippo signaling pathway, which controls organ size and tumor growth by enhancing apoptosis. Loss of the encoded protein results in cell proliferation and cancer formation. The encoded protein is also involved in the control of microtubule stability during cytokinesis. Several transcript variants encoding different isoforms have been found for this gene. [provided by RefSeq, Nov 2015],
<b>Function :</b>	function:Stimulates the kinase activity of STK38 and STK38L.,PTM:Phosphorylated.,similarity:Belongs to the MOB1/phocein family.,subunit:Binds STK38 and STK38L.,
<b>Subcellular Location :</b>	cytosol,extracellular exosome,
<b>Expression :</b>	Adrenal gland, bone marrow, brain, placenta, prostate, salivary gland, skeletal muscle, testis, thymus, thyroid gland, heart, spinal cord, fetal brain and fetal liver.
<b>Sort :</b>	9731
<b>No4 :</b>	1
<b>Host :</b>	Rabbit
<b>Modifications :</b>	Phospho

## Products Images





Immunohistochemical analysis of paraffin-embedded human Colon cancer. 1, Antibody was diluted at 1:200(4° overnight). 2, Tris-EDTA,pH9.0 was used for antigen retrieval. 3,Secondary antibody was diluted at 1:200(room temperature, 45min).