

eEF2 (Phospho Thr56) Antibody

Catalog No :	YP1215
Reactivity :	Human;Mouse;Rat
Applications :	WB;ELISA
Target :	eEF2
Fields :	>>AMPK signaling pathway;>>Oxytocin signaling pathway
Gene Name :	EEF2 EF2
Protein Name :	Elongation factor 2 (EF-2)
Human Gene Id :	1938
Human Swiss Prot No :	P13639
Mouse Gene Id :	13629
Mouse Swiss Prot No :	P58252
Rat Gene Id :	29565
Rat Swiss Prot No :	P05197
Immunogen :	Synthesized phospho derived from human eEF2 (Phospho-Thr56)
Specificity :	This detects endogenous levels of eEF2 (Phospho-Thr56)
Formulation :	Liquid in PBS containing 50% glycerol, 0.5% BSA and 0.02% sodium azide.
Source :	Polyclonal, Rabbit,IgG
Dilution :	WB 1:500-2000, ELISA 1:10000-20000
Purification :	The antibody was affinity-purified from rabbit antiserum by affinity-

chromatography using epitope-specific immunogen.

Concentration : 1 mg/ml

Storage Stability : -15°C to -25°C/1 year(Do not lower than -25°C)

Observed Band : 100kD

Background : This gene encodes a member of the GTP-binding translation elongation factor family. This protein is an essential factor for protein synthesis. It promotes the GTP-dependent translocation of the nascent protein chain from the A-site to the P-site of the ribosome. This protein is completely inactivated by EF-2 kinase phosphorylation. [provided by RefSeq, Jul 2008],

Function : function:This protein promotes the GTP-dependent translocation of the nascent protein chain from the A-site to the P-site of the ribosome.,PTM:Diphthamide is 2-[3-carboxyamido-3-(trimethyl-ammonio)propyl]histidine. Diphthamide can be ADP-ribosylated by diphtheria toxin and by Pseudomonas exotoxin A.,PTM:Phosphorylation by EF-2 kinase completely inactivates EF-2.,similarity:Belongs to the GTP-binding elongation factor family. EF-G/EF-2 subfamily.,subunit:Component of the mRNA surveillance SURF complex, at least composed of ERF1, ERF3 (ERF3A or ERF3B), EEF2, UPF1/RENT1, SMG1, SMG8 and SMG9.,

Subcellular Location : Cytoplasm . Nucleus . Phosphorylation by CSK promotes cleavage and SUMOylation-dependent nuclear translocation of the C-terminal cleavage product. .

Expression : Brain,Cajal-Retzius cell,Epithelium,Hepatocyte,Ovary,Periph

Tag : hot

Sort : 5414

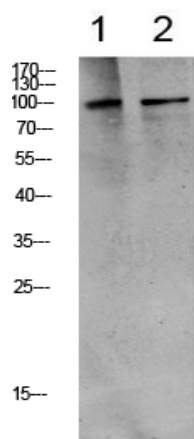
No2 : 2331S

No4 : 1

Host : Rabbit

Modifications : Phospho

Products Images



1 3T3
2 HEPG2

Western blot analysis of various lysate, antibody was diluted at 1000. Secondary antibody(catalog#:RS0002) was diluted at 1:20000