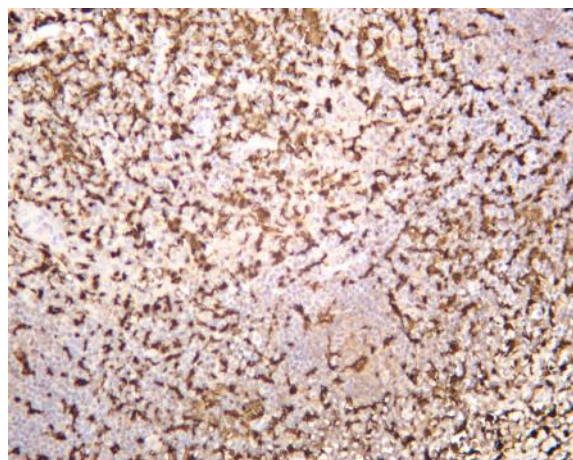


Iba1 (PT0288R) PT® Rabbit mAb

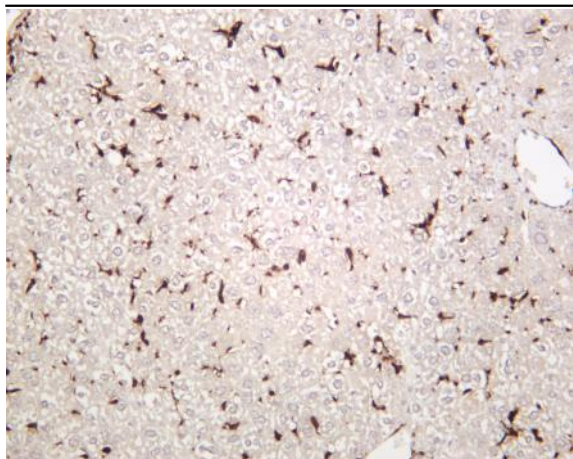
Catalog No :	YM8165
Reactivity :	Human; Mouse; Rat;
Applications :	WB;IHC;IF;IP;ELISA
Protein Name :	AIF1 G1 IBA1
Sequence :	Allograft inflammatory factor 1 (AIF-1) (Ionized calcium-binding adapter molecule 1) (Protein G1)
Human Gene Id :	199
Human Swiss Prot No :	P55008
Mouse Gene Id :	11629
Mouse Swiss Prot No :	O70200
Rat Gene Id :	29427
Rat Swiss Prot No :	P55009
Specificity :	endogenous
Formulation :	PBS, 50% glycerol, 0.05% Proclin 300, 0.05%BSA
Source :	Monoclonal, rabbit, IgG, Kappa
Dilution :	IHC 1:2000-1:4000,WB 1:1000-1:5000,IF 1:200-1:1000,ELISA 1:5000-1:20000,IP 1:50-1:200,
Purification :	Protein A
Storage Stability :	-15°C to -25°C/1 year(Do not lower than -25°C)
Molecularweight :	16kD

Observed Band :	16kD
Background :	This gene encodes a protein that binds actin and calcium. This gene is induced by cytokines and interferon and may promote macrophage activation and growth of vascular smooth muscle cells and T-lymphocytes. Polymorphisms in this gene may be associated with systemic sclerosis. Alternative splicing results in multiple transcript variants, but the full-length and coding nature of some of these variants is not certain. [provided by RefSeq, Jan 2016],
Function :	function:May play a role in macrophage activation and function.,PTM:Phosphorylated on serine residues.,similarity:Contains 2 EF-hand domains.,
Subcellular Location :	Cytoplasm
Expression :	Detected in T-lymphocytes and peripheral blood mononuclear cells.
Tag :	hot,recombinant
Sort :	673
No4 :	1
Host :	Rabbit
Modifications :	Unmodified

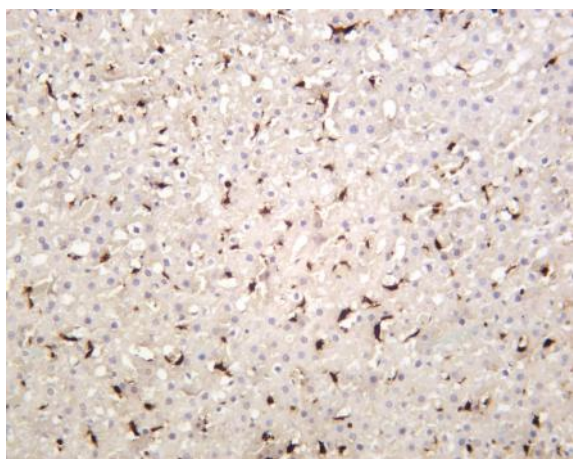
Products Images



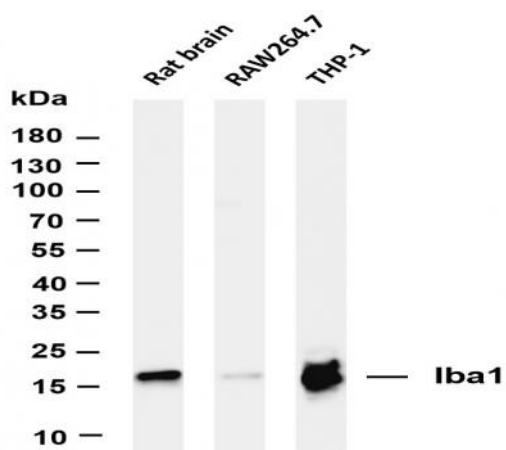
Human tonsil was stained with anti-Iba1 (PT0288R) rabbit antibody



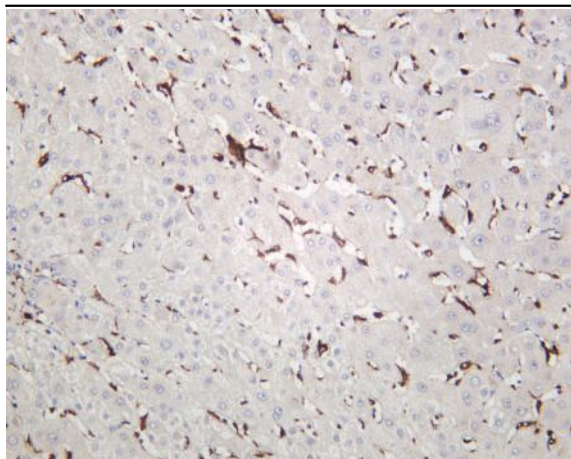
Mouse liver was stained with anti-Iba1 (PT0288R) rabbit antibody



Rat liver was stained with anti-Iba1 (PT0288R) rabbit antibody



Various whole cell lysates were separated by 4-20% SDS-PAGE, and the membrane was blotted with anti-Iba1 (PT0288R) antibody. The HRP-conjugated Goat anti-Rabbit IgG(H + L) antibody was used to detect the antibody. Lane 1: Rat brain Lane 2: RAW264.7 Lane 3: THP-1 Predicted band size: 16kDa Observed band size: 16kDa



Human liver was stained with anti-Iba1 (PT0288R) rabbit antibody