

## Integrin $\alpha$ 4 (phospho Ser1027) Polyclonal Antibody

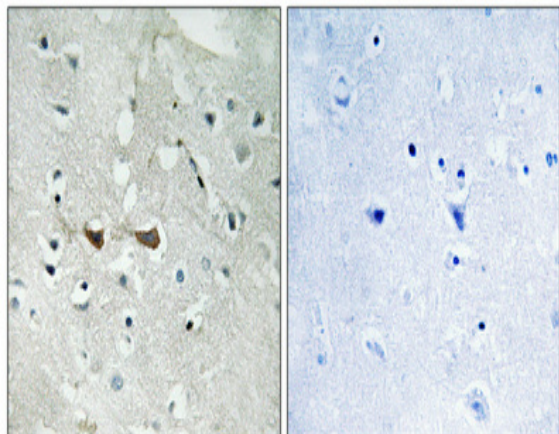
<b>Catalog No :</b>	YP1155
<b>Reactivity :</b>	Human;Mouse
<b>Applications :</b>	IHC;IF;ELISA
<b>Target :</b>	Integrin $\alpha$ 4
<b>Fields :</b>	>>PI3K-Akt signaling pathway;>>Focal adhesion;>>ECM-receptor interaction;>>Cell adhesion molecules;>>Hematopoietic cell lineage;>>Leukocyte transendothelial migration;>>Intestinal immune network for IgA production;>>Regulation of actin cytoskeleton;>>Yersinia infection;>>Leishmaniasis;>>Human papillomavirus infection;>>Hypertrophic cardiomyopathy;>>Arrhythmogenic right ventricular cardiomyopathy;>>Dilated cardiomyopathy
<b>Gene Name :</b>	ITGA4
<b>Protein Name :</b>	Integrin alpha-4
<b>Human Gene Id :</b>	3676
<b>Human Swiss Prot No :</b>	P13612
<b>Mouse Gene Id :</b>	16401
<b>Mouse Swiss Prot No :</b>	Q00651
<b>Immunogen :</b>	The antiserum was produced against synthesized peptide derived from human Integrin alpha4 around the phosphorylation site of Ser1027. AA range:983-1032
<b>Specificity :</b>	Phospho-Integrin $\alpha$ 4 (S1027) Polyclonal Antibody detects endogenous levels of Integrin $\alpha$ 4 protein only when phosphorylated at S1027.
<b>Formulation :</b>	Liquid in PBS containing 50% glycerol, 0.5% BSA and 0.02% sodium azide.
<b>Source :</b>	Polyclonal, Rabbit,IgG
	IHC 1:100 - 1:300. IF 1:200 - 1:1000. ELISA: 1:5000. Not yet tested in other

<b>Dilution :</b>	applications.
<b>Purification :</b>	The antibody was affinity-purified from rabbit antiserum by affinity-chromatography using epitope-specific immunogen.
<b>Concentration :</b>	1 mg/ml
<b>Storage Stability :</b>	-15°C to -25°C/1 year(Do not lower than -25°C)
<b>Molecularweight :</b>	115kD
<b>Cell Pathway :</b>	Focal adhesion;ECM-receptor interaction;Cell adhesion molecules (CAMs);Hematopoietic cell lineage;Leukocyte transendothelial migration;Intestinal immune network for IgA production;Regulates Actin and
<b>Background :</b>	integrin subunit alpha 4(ITGA4) Homo sapiens The gene encodes a member of the integrin alpha chain family of proteins. Integrins are heterodimeric integral membrane proteins composed of an alpha chain and a beta chain that function in cell surface adhesion and signaling. The encoded preproprotein is proteolytically processed to generate light and heavy chains that comprise the alpha 4 subunit. This subunit associates with a beta 1 or beta 7 subunit to form an integrin that may play a role in cell motility and migration. This integrin is a therapeutic target for the treatment of multiple sclerosis, Crohn's disease and inflammatory bowel disease. Alternative splicing results in multiple transcript variants. [provided by RefSeq, Oct 2015],
<b>Function :</b>	domain:The SG1 motif is involved in binding to chondroitin sulfate glycosaminoglycan and cell adhesion.,function:Integrins alpha-4/beta-1 (VLA-4) and alpha-4/beta-7 are receptors for fibronectin. They recognize one or more domains within the alternatively spliced CS-1 and CS-5 regions of fibronectin. They are also receptors for VCAM1. Integrin alpha-4/beta-1 recognizes the sequence Q-I-D-S in VCAM1. Integrin alpha-4/beta-7 is also a receptor for MADCAM1. It recognizes the sequence L-D-T in MADCAM1. On activated endothelial cells integrin VLA-4 triggers homotypic aggregation for most VLA-4-positive leukocyte cell lines. It may also participate in cytolytic T-cell interactions with target cells.,PTM:Phosphorylation on Ser-1027 inhibits PXN binding.,similarity:Belongs to the integrin alpha chain family.,similarity:Contains 7 FG-GAP repeats.,subunit:Heterodimer of an alpha and a beta subunit
<b>Subcellular Location :</b>	Membrane; Single-pass type I membrane protein.
<b>Expression :</b>	Lymph,Peripheral blood,Prostate,Spleen,Testis,
<b>Sort :</b>	8600
<b>No4 :</b>	1

**Host :** Rabbit**Modifications :** Phospho

---

## Products Images



Immunohistochemical analysis of paraffin-embedded Human brain. Antibody was diluted at 1:100(4° overnight). High-pressure and temperature Tris-EDTA,pH8.0 was used for antigen retrieval. Negative contrl (right) obtaned from antibody was pre-absorbed by immunogen peptide.