

Syndecan-4 (phospho Ser179) Polyclonal Antibody

Catalog No :	YP1150
Reactivity :	Human;Mouse;Rat
Applications :	IHC;IF;ELISA
Target :	Syndecan-4
Fields :	>>ECM-receptor interaction;>>Cell adhesion molecules;>>Proteoglycans in cancer;>>Fluid shear stress and atherosclerosis
Gene Name :	SDC4
Protein Name :	Syndecan-4
Human Gene Id :	6385
Human Swiss Prot No :	P31431
Mouse Gene Id :	20971
Mouse Swiss Prot No :	O35988
Rat Gene Id :	24771
Rat Swiss Prot No :	P34901
Immunogen :	The antiserum was produced against synthesized peptide derived from human Syndecan4 around the phosphorylation site of Ser179. AA range:145-194
Specificity :	Phospho-Syndecan-4 (S179) Polyclonal Antibody detects endogenous levels of Syndecan-4 protein only when phosphorylated at S179.
Formulation :	Liquid in PBS containing 50% glycerol, 0.5% BSA and 0.02% sodium azide.
Source :	Polyclonal, Rabbit,IgG
Dilution :	IHC 1:100 - 1:300. IF 1:200 - 1:1000. ELISA: 1:20000. Not yet tested in other

applications.

Purification : The antibody was affinity-purified from rabbit antiserum by affinity-chromatography using epitope-specific immunogen.

Concentration : 1 mg/ml

Storage Stability : -15°C to -25°C/1 year(Do not lower than -25°C)

Molecularweight : 22kD

Cell Pathway : ECM-receptor interaction;Cell adhesion molecules (CAMs);

Background : The protein encoded by this gene is a transmembrane (type I) heparan sulfate proteoglycan that functions as a receptor in intracellular signaling. The encoded protein is found as a homodimer and is a member of the syndecan proteoglycan family. This gene is found on chromosome 20, while a pseudogene has been found on chromosome 22. [provided by RefSeq, Jul 2008],

Function : function:Cell surface proteoglycan that bears heparan sulfate.,function:Cell surface proteoglycan.,similarity:Belongs to the syndecan proteoglycan family.,subunit:Homodimer. Interacts with CDCP1, with GIPC PDZ domain and with NUDT16L1/SDOS (By similarity). Interacts with SDCBP.,tissue specificity:Expressed in epithelial and fibroblastic cells.,

Subcellular Location : [Isoform 1]: Membrane ; Single-pass type I membrane protein . Secreted . Shedding of the ectodomain produces a soluble form. .; [Isoform 2]: Secreted.

Expression : Expressed in epithelial and fibroblastic cells.

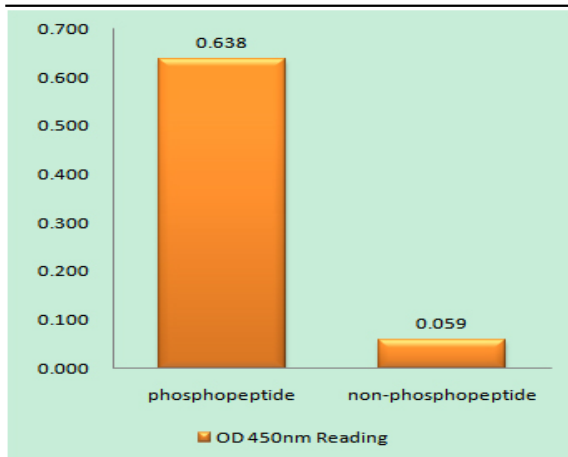
Sort : 16817

No4 : 1

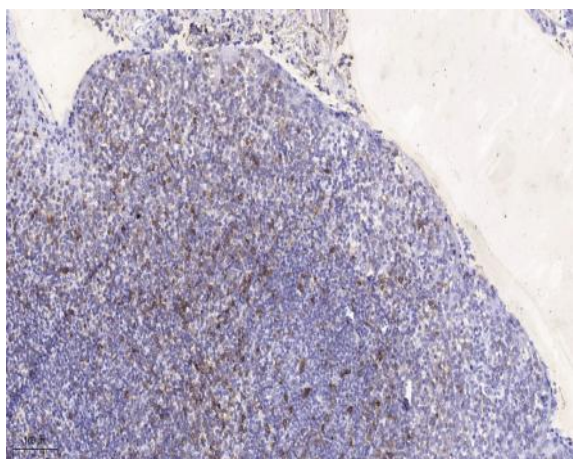
Host : Rabbit

Modifications : Phospho

Products Images



Enzyme-Linked Immunosorbent Assay (Phospho-ELISA) for Immunogen Phosphopeptide (Phospho-left) and Non-Phosphopeptide (Phospho-right), using Syndecan4 (Phospho-Ser179) Antibody



Immunohistochemical analysis of paraffin-embedded human tonsil. 1, Antibody was diluted at 1:200(4° overnight). 2, Tris-EDTA,pH9.0 was used for antigen retrieval. 3,Secondary antibody was diluted at 1:200(room temperature, 45min).