

## HSP20 (phospho Ser16) Polyclonal Antibody

|                              |   |
|------------------------------|---|
| <b>Catalog No :</b>          | YP1130  |
| <b>Reactivity :</b>          | Human;Mouse;Rat   |
| <b>Applications :</b>        | IHC;IF;ELISA  |
| <b>Target :</b>              | HSP20   |
| <b>Gene Name :</b>           | HSPB6   |
| <b>Protein Name :</b>        | Heat shock protein beta-6   |
| <b>Human Gene Id :</b>       | 126393  |
| <b>Human Swiss Prot No :</b> | O14558  |
| <b>Mouse Gene Id :</b>       | 243912  |
| <b>Mouse Swiss Prot No :</b> | Q5EBG6  |
| <b>Rat Gene Id :</b>         | 192245  |
| <b>Rat Swiss Prot No :</b>   | P97541  |
| <b>Immunogen :</b>           | The antiserum was produced against synthesized peptide derived from human HSP20 around the phosphorylation site of Ser16. AA range:5-54 |
| <b>Specificity :</b>         | Phospho-HSP20 (S16) Polyclonal Antibody detects endogenous levels of HSP20 protein only when phosphorylated at S16.                     |
| <b>Formulation :</b>         | Liquid in PBS containing 50% glycerol, 0.5% BSA and 0.02% sodium azide.   |
| <b>Source :</b>              | Polyclonal, Rabbit,IgG  |
| <b>Dilution :</b>            | IHC 1:100 - 1:300. IF 1:200 - 1:1000. ELISA: 1:5000. Not yet tested in other applications.  |
| <b>Purification :</b>        | The antibody was affinity-purified from rabbit antiserum by affinity-   |

chromatography using epitope-specific immunogen.

**Concentration :** 1 mg/ml

**Storage Stability :** -15°C to -25°C/1 year (Do not lower than -25°C)

**Molecularweight :** 17kD

**Background :** This locus encodes a heat shock protein. The encoded protein likely plays a role in smooth muscle relaxation. [provided by RefSeq, Jan 2012],

**Function :** PTM: The N-terminus is blocked., similarity: Belongs to the small heat shock protein (HSP20) family., subunit: May exist as disulfide-linked dimer and monomer.,

**Subcellular Location :** Cytoplasm . Nucleus . Secreted . Translocates to nuclear foci during heat shock.

**Expression :** Muscle, Skeletal muscle, Skin,

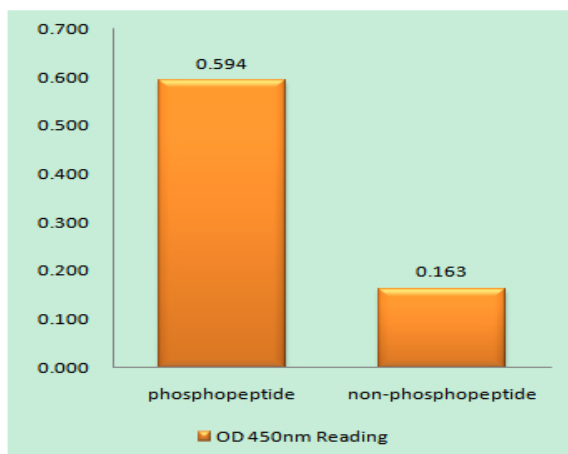
**Sort :** 7887

**No4 :** 1

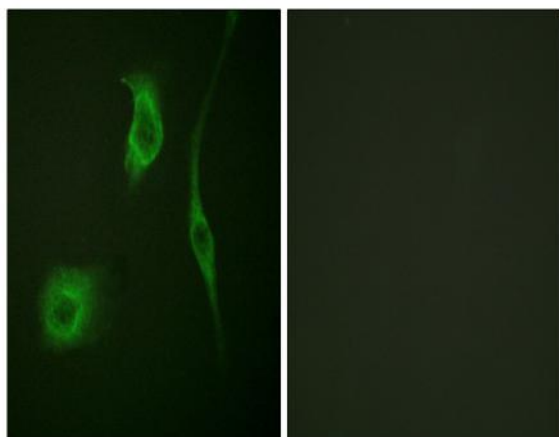
**Host :** Rabbit

**Modifications :** Phospho

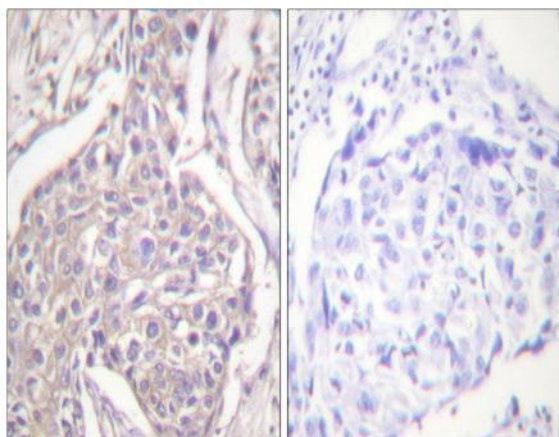
## Products Images



Enzyme-Linked Immunosorbent Assay (Phospho-ELISA) for Immunogen Phosphopeptide (Phospho-left) and Non-Phosphopeptide (Phospho-right), using HSP20 (Phospho-Ser16) Antibody



Immunofluorescence analysis of HeLa cells, using HSP20 (Phospho-Ser16) Antibody. The picture on the right is blocked with the phospho peptide.



Immunohistochemistry analysis of paraffin-embedded human breast carcinoma, using HSP20 (Phospho-Ser16) Antibody. The picture on the right is blocked with the phospho peptide.