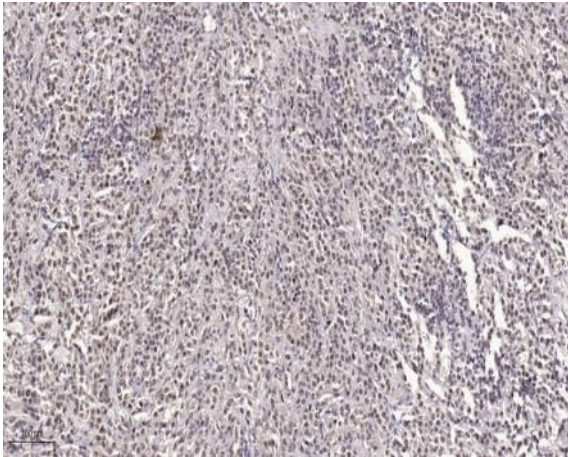


SCG10 (phospho Ser73) Polyclonal Antibody

Catalog No :	YP1110
Reactivity :	Human;Mouse;Rat
Applications :	IHC;IF;ELISA
Target :	Stathmin
Gene Name :	STMN2
Protein Name :	Stathmin-2
Human Gene Id :	11075
Human Swiss Prot No :	Q93045
Mouse Gene Id :	20257
Mouse Swiss Prot No :	P55821
Rat Gene Id :	84510
Rat Swiss Prot No :	P21818
Immunogen :	Synthesized phospho-peptide around the phosphorylation site of human SCG10 (phospho Ser73)
Specificity :	Phospho-SCG10 (S73) Polyclonal Antibody detects endogenous levels of SCG10 protein only when phosphorylated at S73.
Formulation :	Liquid in PBS containing 50% glycerol, 0.5% BSA and 0.02% sodium azide.
Source :	Polyclonal, Rabbit,IgG
Dilution :	IHC 1:100 - 1:300. ELISA: 1:5000.. IF 1:50-200
Purification :	The antibody was affinity-purified from rabbit antiserum by affinity-chromatography using epitope-specific immunogen.

Concentration :	1 mg/ml
Storage Stability :	-15°C to -25°C/1 year(Do not lower than -25°C)
Molecularweight :	21kD
Cell Pathway :	Regulation of Microtubule Dynamics
Background :	<p>This gene encodes a member of the stathmin family of phosphoproteins. Stathmin proteins function in microtubule dynamics and signal transduction. The encoded protein plays a regulatory role in neuronal growth and is also thought to be involved in osteogenesis. Reductions in the expression of this gene have been associated with Down's syndrome and Alzheimer's disease. Alternatively spliced transcript variants have been observed for this gene. A pseudogene of this gene is located on the long arm of chromosome 6. [provided by RefSeq, Nov 2010],</p>
Function :	<p>function:May play a role in neuronal differentiation, and in modulating membrane interaction with the cytoskeleton during neurite outgrowth.,PTM:Sumoylated.,similarity:Belongs to the stathmin family.,subcellular location:Associated with punctate structures in the perinuclear cytoplasm, axons, and growth cones of developing neurons. SCG10 exists in both soluble and membrane-bound forms.,tissue specificity:Neuron specific.,</p>
Subcellular Location :	<p>Cytoplasm . Cytoplasm, perinuclear region . Cell projection, growth cone. Membrane ; Peripheral membrane protein ; Cytoplasmic side . Cell projection, axon. Golgi apparatus. Endosome . Cell projection, lamellipodium. Associated with punctate structures in the perinuclear cytoplasm, axons, and growth cones of developing neurons. SCG10 exists in both soluble and membrane-bound forms. Colocalized with CIB1 in neurites of developing hippocampal primary neurons (By similarity). Colocalized with CIB1 in the cell body, neuritis and growth cones of neurons. Colocalized with CIB1 to the leading edge of lamellipodia. .</p>
Expression :	Neuron specific.
Sort :	16174
No4 :	1
Host :	Rabbit
Modifications :	Phospho

Products Images



Immunohistochemical analysis of paraffin-embedded human small intestinal carcinoma tissue. 1,primary Antibody was diluted at 1:200(4 ° overnight). 2, Sodium citrate pH 6.0 was used for antigen retrieval(>98 °C,20min). 3,Secondary antibody was diluted at 1:200