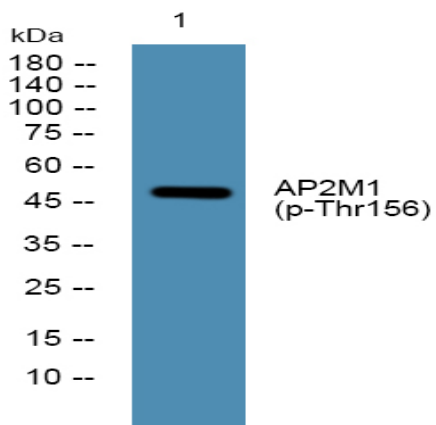


AP2M1 (Phospho Thr156) rabbit pAb

Catalog No :	YP1260
Reactivity :	Human;Rat;Mouse;
Applications :	WB
Target :	AP2M1
Fields :	>>Endocytosis;>>Synaptic vesicle cycle;>>Endocrine and other factor-regulated calcium reabsorption;>>Huntington disease
Gene Name :	AP2M1 CLAPM1 KIAA0109
Protein Name :	AP2M1 (Thr156)
Human Gene Id :	1173
Human Swiss Prot No :	Q96CW1
Mouse Gene Id :	11773
Mouse Swiss Prot No :	P84091
Rat Gene Id :	116563
Rat Swiss Prot No :	P84092
Immunogen :	Synthesized phospho peptide around human AP2M1 (Thr156)
Specificity :	This antibody detects endogenous levels of Human AP2M1 (phospho-Thr156)
Formulation :	Liquid in PBS containing 50% glycerol, 0.5% BSA and 0.02% sodium azide.
Source :	Polyclonal, Rabbit,IgG
Dilution :	WB 1:1000-2000

Purification :	The antibody was affinity-purified from rabbit serum by affinity-chromatography using specific immunogen.
Concentration :	1 mg/ml
Storage Stability :	-15°C to -25°C/1 year(Do not lower than -25°C)
Observed Band :	47kD
Cell Pathway :	Endocytosis;Huntington's disease;
Background :	<p>This gene encodes a subunit of the heterotetrameric coat assembly protein complex 2 (AP2), which belongs to the adaptor complexes medium subunits family. The encoded protein is required for the activity of a vacuolar ATPase, which is responsible for proton pumping occurring in the acidification of endosomes and lysosomes. The encoded protein may also play an important role in regulating the intracellular trafficking and function of CTLA-4 protein. Three transcript variants encoding different isoforms have been found for this gene. [provided by RefSeq, Jul 2015],</p>
Function :	<p>function:Component of the adaptor complexes which link clathrin to receptors in coated vesicles. Clathrin-associated protein complexes are believed to interact with the cytoplasmic tails of membrane proteins, leading to their selection and concentration. AP50 is a subunit of the plasma membrane adaptor. The complex binds polyphosphoinositide-containing lipids.,PTM:Phosphorylated.,similarity:Belongs to the adaptor complexes medium subunit family.,similarity:Contains 1 MHD (mu homology) domain.,subcellular location:Component of the coat surrounding the cytoplasmic face of coated vesicles in the plasma membrane.,subunit:Adaptor protein complex 2 (AP-2) is an heterotetramer composed of two large adaptins (alpha-type subunit AP2A1 or AP2A2 and beta-type subunit AP2B1), a medium adaptin (mu-type subunit AP2M1) and a small adaptin (sigma-type subunit AP2S1). Interacts with ATP6V1H and MEGF10.,</p>
Subcellular Location :	Cell membrane . Membrane, coated pit ; Peripheral membrane protein; Cytoplasmic side. AP-2 appears to be excluded from internalizing CCVs and to disengage from sites of endocytosis seconds before internalization of the nascent CCV. .
Expression :	Expressed in the brain (at protein level).
Sort :	2102
No4 :	1
Host :	Rabbit

Products Images



Western blot analysis of lysates from K562 cells, primary antibody was diluted at 1:1000, 4° over night