

**CdGAP (phospho Thr789) Polyclonal Antibody**

<b>Catalog No :</b>	YP1086
<b>Reactivity :</b>	Human;Mouse;Rat
<b>Applications :</b>	IHC;IF;ELISA
<b>Target :</b>	CdGAP
<b>Gene Name :</b>	ARHGAP31
<b>Protein Name :</b>	Rho GTPase-activating protein 31
<b>Human Gene Id :</b>	57514
<b>Human Swiss Prot No :</b>	Q9ULL6
<b>Immunogen :</b>	Synthesized phospho-peptide around the phosphorylation site of human CdGAP (phospho Thr789)
<b>Specificity :</b>	Phospho-CdGAP (T789) Polyclonal Antibody detects endogenous levels of CdGAP protein only when phosphorylated at T789.
<b>Formulation :</b>	Liquid in PBS containing 50% glycerol, 0.5% BSA and 0.02% sodium azide.
<b>Source :</b>	Polyclonal, Rabbit,IgG
<b>Dilution :</b>	IHC 1:100 - 1:300. ELISA: 1:40000.. IF 1:50-200
<b>Purification :</b>	The antibody was affinity-purified from rabbit antiserum by affinity-chromatography using epitope-specific immunogen.
<b>Concentration :</b>	1 mg/ml
<b>Storage Stability :</b>	-15°C to -25°C/1 year(Do not lower than -25°C)
<b>Molecularweight :</b>	157kD
<b>Background :</b>	This gene encodes a GTPase-activating protein (GAP). A variety of cellular

processes are regulated by Rho GTPases which cycle between an inactive form bound to GDP and an active form bound to GTP. This cycling between inactive and active forms is regulated by guanine nucleotide exchange factors and GAPs. The encoded protein is a GAP shown to regulate two GTPases involved in protein trafficking and cell growth. [provided by RefSeq, Jul 2008],

**Function :**

developmental stage:Mainly expressed in fetal heart and muscle.,function:Functions as a GTPase-activating protein (GAP) for RAC1 and CDC42. Required for cell spreading, polarized lamellipodia formation and cell migration.,PTM:Phosphorylation on Thr-789 reduces GAP activity.,similarity:Contains 1 Rho-GAP domain.,subunit:Interacts with ITSN1, which inhibits GAP activity. Interacts with PARVA.,

**Subcellular Location :**

cytosol,focal adhesion,lamellipodium,

**Expression :**

Brain,

**Sort :**

3771

**No4 :**

1

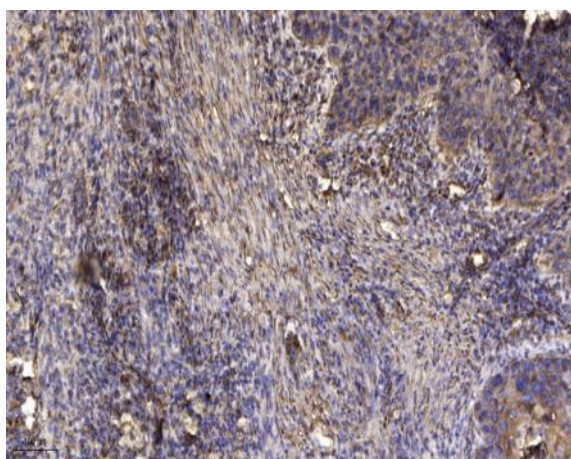
**Host :**

Rabbit

**Modifications :**

Phospho

## Products Images



Immunohistochemical analysis of paraffin-embedded human Squamous cell carcinoma of lung. 1, Antibody was diluted at 1:200(4° overnight). 2, Tris-EDTA,pH9.0 was used for antigen retrieval. 3,Secondary antibody was diluted at 1:200(room temperature, 45min).