

MAP2 (Phospho Thr1616) Polyclonal Antibody

Catalog No :	YP1233
Reactivity :	Human;Mouse;Rat
Applications :	IHC;IF;WB
Target :	MAP-2
Gene Name :	MAP2
Protein Name :	MAP2 (Phospho-Thr1616)
Human Gene Id :	4133
Human Swiss Prot No :	P11137
Immunogen :	Synthesized peptide derived from human MAP2 (Phospho-Thr1616)
Specificity :	This antibody detects endogenous phospho levels of MAP2 (Phospho-Thr1616) at Human:T1616, Mouse:T1620, Rat:T1622
Formulation :	Liquid in PBS containing 50% glycerol, 0.5% BSA and 0.02% sodium azide.
Source :	Polyclonal, Rabbit,IgG
Dilution :	IHC 1:50-200, WB 1:500-2000. IF 1:50-200
Purification :	The antibody was affinity-purified from rabbit serum by affinity-chromatography using specific immunogen.
Concentration :	1 mg/ml
Storage Stability :	-15°C to -25°C/1 year(Do not lower than -25°C)
Observed Band :	280kD
Background :	This gene encodes a protein that belongs to the microtubule-associated protein family. The proteins of this family are thought to be involved in microtubule

assembly, which is an essential step in neurogenesis. The products of similar genes in rat and mouse are neuron-specific cytoskeletal proteins that are enriched in dendrites, implicating a role in determining and stabilizing dendritic shape during neuron development. A number of alternatively spliced variants encoding distinct isoforms have been described. [provided by RefSeq, Jan 2010],

Function :

alternative products:Additional isoforms seem to exist,function:The exact function of MAP2 is unknown but MAPs may stabilize the microtubules against depolymerization. They also seem to have a stiffening effect on microtubules.,PTM:MAP2A/c is phosphorylated. Phosphorylated upon DNA damage, probably by ATM or ATR.,similarity:Contains 3 Tau/MAP repeats.,similarity:Contains 4 Tau/MAP repeats.,

Subcellular Location :

Cytoplasm, cytoskeleton . Cell projection, dendrite .

Expression :

Brain,Brain cortex,Epithelium,Pancreas,Testis,

Sort :

9364

No4 :

1

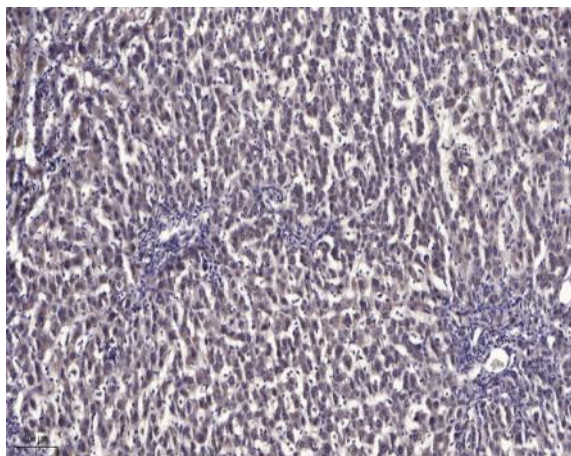
Host :

Rabbit

Modifications :

Phospho

Products Images



Immunohistochemical analysis of paraffin-embedded human liver cancer. 1, Antibody was diluted at 1:200(4° overnight). 2, Tris-EDTA,pH9.0 was used for antigen retrieval. 3,Secondary antibody was diluted at 1:200(room temperature, 45min).