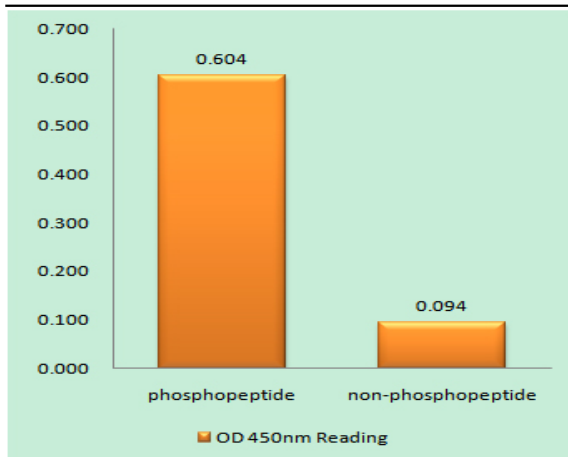


GATA-3 (phospho Ser308) Polyclonal Antibody

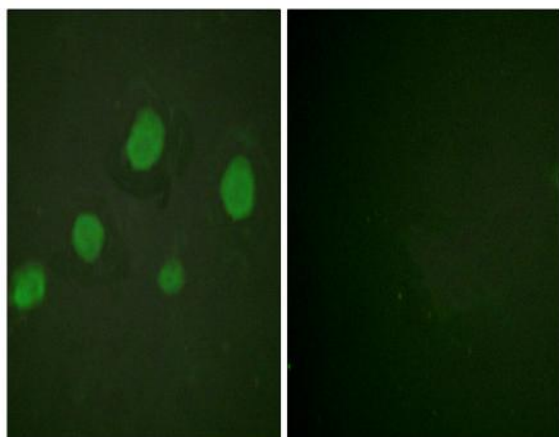
Catalog No :	YP1179
Reactivity :	Human;Mouse
Applications :	WB;IF;ELISA
Target :	GATA-3
Fields :	>>Th1 and Th2 cell differentiation;>>Th17 cell differentiation;>>Parathyroid hormone synthesis, secretion and action;>>Inflammatory bowel disease
Gene Name :	GATA3
Protein Name :	Trans-acting T-cell-specific transcription factor GATA-3
Human Gene Id :	2625
Human Swiss Prot No :	P23771
Mouse Gene Id :	14462
Mouse Swiss Prot No :	P23772
Immunogen :	The antiserum was produced against synthesized peptide derived from human GATA3 around the phosphorylation site of Ser308. AA range:274-323
Specificity :	Phospho-GATA-3 (S308) Polyclonal Antibody detects endogenous levels of GATA-3 protein only when phosphorylated at S308.
Formulation :	Liquid in PBS containing 50% glycerol, 0.5% BSA and 0.02% sodium azide.
Source :	Polyclonal, Rabbit,IgG
Dilution :	WB 1:500-2000 IF 1:200 - 1:1000. ELISA: 1:10000. Not yet tested in other applications.
Purification :	The antibody was affinity-purified from rabbit antiserum by affinity-chromatography using epitope-specific immunogen.

Concentration :	1 mg/ml
Storage Stability :	-15°C to -25°C/1 year(Do not lower than -25°C)
Molecularweight :	48kD
Background :	This gene encodes a protein which belongs to the GATA family of transcription factors. The protein contains two GATA-type zinc fingers and is an important regulator of T-cell development and plays an important role in endothelial cell biology. Defects in this gene are the cause of hypoparathyroidism with sensorineural deafness and renal dysplasia. [provided by RefSeq, Nov 2009],
Function :	disease:Defects in GATA3 are the cause of hypoparathyroidism with sensorineural deafness and renal dysplasia (HDR) [MIM:146255]; also known as Barakat syndrome.,function:Transcriptional activator which binds to the enhancer of the T-cell receptor alpha and delta genes. Binds to the consensus sequence 5'-AGATAG-3'.,similarity:Contains 2 GATA-type zinc fingers.,tissue specificity:T-cells and endothelial cells.,
Subcellular Location :	Nucleus.
Expression :	T-cells and endothelial cells.
Tag :	hot
Sort :	6481
No4 :	1
Host :	Rabbit
Modifications :	Phospho

Products Images



Enzyme-Linked Immunosorbent Assay (Phospho-ELISA) for Immunogen Phosphopeptide (Phospho-left) and Non-Phosphopeptide (Phospho-right), using GATA3 (Phospho-Ser308) Antibody



Immunofluorescence analysis of HUVEC cells, using GATA3 (Phospho-Ser308) Antibody. The picture on the right is blocked with the phospho peptide.