

**Ras-GRF1 (phospho Ser916) Polyclonal Antibody**

<b>Catalog No :</b>	YP0975
<b>Reactivity :</b>	Mouse;Rat
<b>Applications :</b>	WB;IHC;IF;ELISA
<b>Target :</b>	Ras-GRF1
<b>Gene Name :</b>	RASGRF1
<b>Protein Name :</b>	Ras-specific guanine nucleotide-releasing factor 1
<b>Human Swiss Prot No :</b>	Q13972
<b>Mouse Gene Id :</b>	19417
<b>Rat Gene Id :</b>	192213
<b>Rat Swiss Prot No :</b>	P28818
<b>Immunogen :</b>	The antiserum was produced against synthesized peptide derived from mouse Ras-GRF1 around the phosphorylation site of Ser916. AA range:882-931
<b>Specificity :</b>	Phospho-Ras-GRF1 (S916) Polyclonal Antibody detects endogenous levels of Ras-GRF1 protein only when phosphorylated at S916.
<b>Formulation :</b>	Liquid in PBS containing 50% glycerol, 0.5% BSA and 0.02% sodium azide.
<b>Source :</b>	Polyclonal, Rabbit,IgG
<b>Dilution :</b>	WB 1:500-2000 IHC 1:100 - 1:300. IF 1:200 - 1:1000. ELISA: 1:20000. Not yet tested in other applications.
<b>Purification :</b>	The antibody was affinity-purified from rabbit antiserum by affinity-chromatography using epitope-specific immunogen.
<b>Concentration :</b>	1 mg/ml

**Storage Stability :** -15°C to -25°C/1 year(Do not lower than -25°C)

**Molecularweight :** 145kD

**Cell Pathway :** MAPK

**Background :** RASGRF1 (Ras Protein Specific Guanine Nucleotide Releasing Factor 1) is a Protein Coding gene. Diseases associated with RASGRF1 include bleeding disorder, platelet-type, 18 and refractive error. Among its related pathways are Signaling by GPCR and Immune System. GO annotations related to this gene include guanyl-nucleotide exchange factor activity and Ras guanyl-nucleotide exchange factor activity. An important paralog of this gene is RALGDS. romotes the exchange of Ras-bound GDP by GTP.

**Tag :** hot

**Sort :** 13825

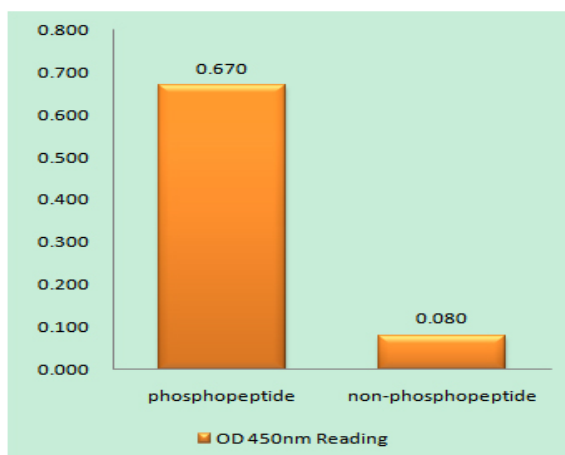
**No2 :** 3321S

**No4 :** 1

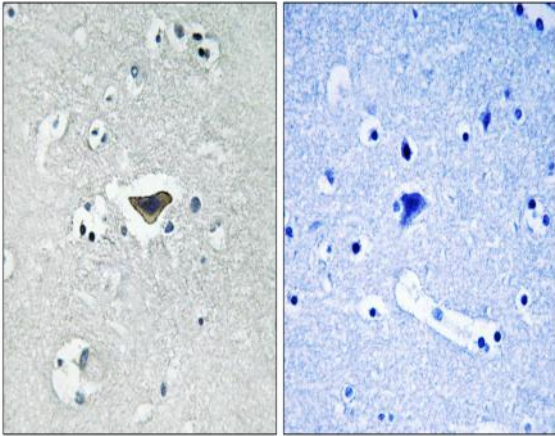
**Host :** Rabbit

**Modifications :** Phospho

## Products Images



Enzyme-Linked Immunosorbent Assay (Phospho-ELISA) for Immunogen Phosphopeptide (Phospho-left) and Non-Phosphopeptide (Phospho-right), using Ras-GRF1 (Phospho-Ser916) Antibody



Immunohistochemistry analysis of paraffin-embedded human brain, using Ras-GRF1 (Phospho-Ser916) Antibody. The picture on the right is blocked with the phospho peptide.