

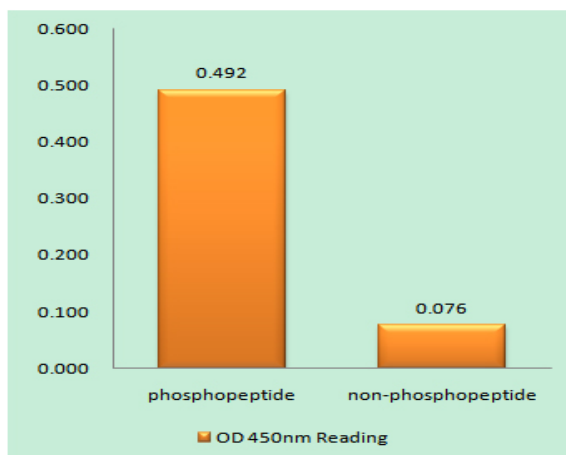
**p68 RNA Helicase (phospho Tyr593) Polyclonal Antibody**

<b>Catalog No :</b>	YP1144
<b>Reactivity :</b>	Human;Mouse;Rat
<b>Applications :</b>	WB;IHC;IF;ELISA
<b>Target :</b>	p68 RNA Helicase
<b>Fields :</b>	>>Spliceosome;>>Transcriptional misregulation in cancer;>>Proteoglycans in cancer
<b>Gene Name :</b>	DDX5
<b>Protein Name :</b>	Probable ATP-dependent RNA helicase DDX5
<b>Human Gene Id :</b>	1655
<b>Human Swiss Prot No :</b>	P17844
<b>Mouse Swiss Prot No :</b>	Q61656
<b>Immunogen :</b>	The antiserum was produced against synthesized peptide derived from human DDX5/DEAD-box Protein 5 around the phosphorylation site of Tyr593. AA range:565-614
<b>Specificity :</b>	Phospho-p68 RNA Helicase (Y593) Polyclonal Antibody detects endogenous levels of p68 RNA Helicase protein only when phosphorylated at Y593.
<b>Formulation :</b>	Liquid in PBS containing 50% glycerol, 0.5% BSA and 0.02% sodium azide.
<b>Source :</b>	Polyclonal, Rabbit,IgG
<b>Dilution :</b>	WB 1:500 - 1:2000.IHC 1:100 - 1:300. IF 1:200 - 1:1000. ELISA: 1:10000. Not yet tested in other applications.
<b>Purification :</b>	The antibody was affinity-purified from rabbit antiserum by affinity-chromatography using epitope-specific immunogen.

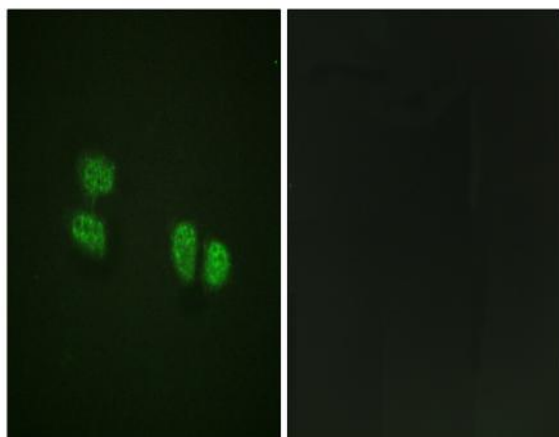
<b>Concentration :</b>	1 mg/ml
<b>Storage Stability :</b>	-15°C to -25°C/1 year(Do not lower than -25°C)
<b>Molecularweight :</b>	69kD
<b>Cell Pathway :</b>	Spliceosome;
<b>Background :</b>	<p>DEAD box proteins, characterized by the conserved motif Asp-Glu-Ala-Asp (DEAD), are putative RNA helicases. They are implicated in a number of cellular processes involving alteration of RNA secondary structure, such as translation initiation, nuclear and mitochondrial splicing, and ribosome and spliceosome assembly. Based on their distribution patterns, some members of this family are believed to be involved in embryogenesis, spermatogenesis, and cellular growth and division. This gene encodes a DEAD box protein, which is a RNA-dependent ATPase, and also a proliferation-associated nuclear antigen, specifically reacting with the simian virus 40 tumor antigen. Alternative splicing results in multiple transcript variants. [provided by RefSeq, Feb 2016],</p>
<b>Function :</b>	<p>function:RNA-dependent ATPase activity. The rate of ATP hydrolysis is highly stimulated by single-stranded RNA. May be involved in pre-mRNA splicing.,PTM:Arg-502 is dimethylated, probably to asymmetric dimethylarginine.,similarity:Belongs to the DEAD box helicase family.,similarity:Belongs to the DEAD box helicase family. DDX5/DBP2 subfamily.,similarity:Contains 1 helicase ATP-binding domain.,similarity:Contains 1 helicase C-terminal domain.,subunit:Identified in the spliceosome C complex, at least composed of AQR, C19orf29, CDC40, CDC5L, CRNKL1, DDX23, DDX41, DDX48, DDX5, DGCR14, DHX35, DHX38, DHX8, EFTUD2, FRG1, GPATC1, HNRPA1, HNRPA2B1, HNRPA3, HNRPC, HNRPF, HNRPH1, HNRPK, HNRPM, HNRPR, HNRPU, KIAA1160, KIAA1604, LSM2, LSM3, MAGOH, MORG1, PABPC1, PLRG1, PNN, PPIE, PPIL1, PPIL3, PPWD1, PRPF19, PRPF4B, PRPF6, PRPF8, RALY, RBM22, RBM8A, RBMX, SART1, SF3A1, SF3A2, SF3A3, SF3B1, SF3B2, SF3</p>
<b>Subcellular Location :</b>	<p>Nucleus . Nucleus, nucleolus . Cytoplasm . During the G0 phase, predominantly located in the nucleus. Cytoplasmic levels increase during the G1/S phase. During the M phase, located at the vicinity of the condensed chromosomes. At G1, localizes in the cytoplasm. .</p>
<b>Expression :</b>	Aorta endothelial cell,Epithelium,Human esophagus tumor,Muscle,
<b>Tag :</b>	hot
<b>Sort :</b>	11527
<b>No4 :</b>	1

**Host :** Rabbit**Modifications :** Phospho

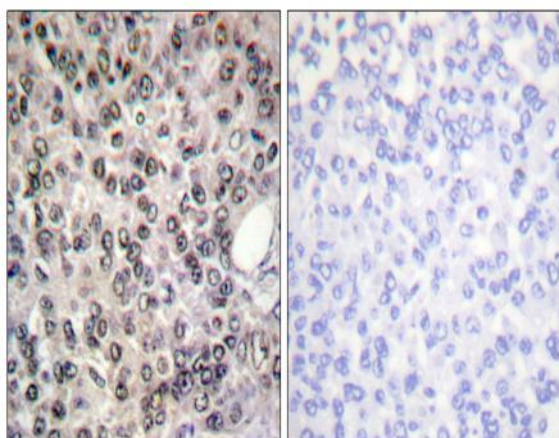
## Products Images



Enzyme-Linked Immunosorbent Assay (Phospho-ELISA) for Immunogen Phosphopeptide (Phospho-left) and Non-Phosphopeptide (Phospho-right), using DDX5/DEAD-box Protein 5 (Phospho-Tyr593) Antibody



Immunofluorescence analysis of HeLa cells, using DDX5/DEAD-box Protein 5 (Phospho-Tyr593) Antibody. The picture on the right is blocked with the phospho peptide.



Immunohistochemistry analysis of paraffin-embedded human breast carcinoma, using DDX5/DEAD-box Protein 5 (Phospho-Tyr593) Antibody. The picture on the right is blocked with the phospho peptide.