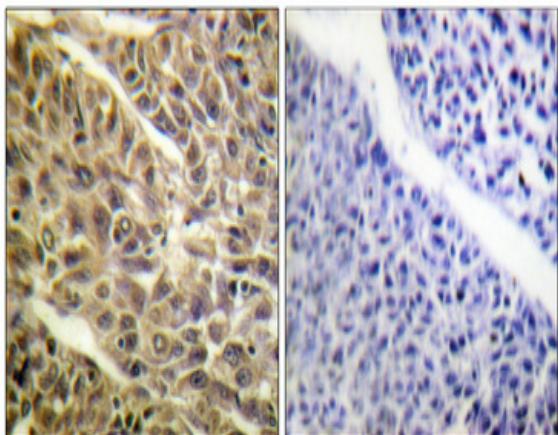


DAPK1 (phospho Ser308) Polyclonal Antibody

Catalog No :	YP1141
Reactivity :	Human;Mouse
Applications :	IHC;IF;ELISA
Target :	DAPK1
Fields :	>>Autophagy - animal;>>Pathways in cancer;>>Bladder cancer
Gene Name :	DAPK1
Protein Name :	Death-associated protein kinase 1
Human Gene Id :	1612
Human Swiss Prot No :	P53355
Mouse Gene Id :	69635
Mouse Swiss Prot No :	Q80YE7
Immunogen :	The antiserum was produced against synthesized peptide derived from human DAPK1 around the phosphorylation site of Ser308. AA range:274-323
Specificity :	Phospho-DAPK1 (S308) Polyclonal Antibody detects endogenous levels of DAPK1 protein only when phosphorylated at S308.
Formulation :	Liquid in PBS containing 50% glycerol, 0.5% BSA and 0.02% sodium azide.
Source :	Polyclonal, Rabbit,IgG
Dilution :	IHC 1:100 - 1:300. IF 1:200 - 1:1000. ELISA: 1:10000. Not yet tested in other applications.
Purification :	The antibody was affinity-purified from rabbit antiserum by affinity-chromatography using epitope-specific immunogen.

Concentration :	1 mg/ml
Storage Stability :	-15°C to -25°C/1 year(Do not lower than -25°C)
Molecularweight :	160kD
Cell Pathway :	Pathways in cancer;Bladder cancer;
Background :	Death-associated protein kinase 1 is a positive mediator of gamma-interferon induced programmed cell death. DAPK1 encodes a structurally unique 160-kD calmodulin dependent serine-threonine kinase that carries 8 ankyrin repeats and 2 putative P-loop consensus sites. It is a tumor suppressor candidate. Alternative splicing results in multiple transcript variants. [provided by RefSeq, Dec 2013],
Function :	catalytic activity:ATP + a protein = ADP + a phosphoprotein.,cofactor:Magnesium.,enzyme regulation:Negatively regulated by autophosphorylation on Ser-308.,function:Calcium/calmodulin-dependent serine/threonine kinase which acts as a positive regulator of apoptosis.,induction:Up-regulated following treatment with interferon-gamma.,similarity:Belongs to the protein kinase superfamily.,similarity:Belongs to the protein kinase superfamily. CAMK Ser/Thr protein kinase family. DAP kinase subfamily.,similarity:Contains 1 death domain.,similarity:Contains 1 protein kinase domain.,similarity:Contains 10 ANK repeats.,subcellular location:Colocalizes with the actin filament system.,
Subcellular Location :	[Isoform 1]: Cytoplasm. Cytoplasm, cytoskeleton. Colocalizes with MAP1B in the microtubules and cortical actin fibers.; [Isoform 2]: Cytoplasm. Cytoplasm, cytoskeleton.
Expression :	Isoform 2 is expressed in normal intestinal tissue as well as in colorectal carcinomas.
Sort :	4989
No4 :	1
Host :	Rabbit
Modifications :	Phospho

Products Images



Immunohistochemical analysis of paraffin-embedded Human lung cancer. Antibody was diluted at 1:100(4° overnight). High-pressure and temperature Tris-EDTA,pH8.0 was used for antigen retrieval. Negative contrl (right) obtaned from antibody was pre-absorbed by immunogen peptide.