

**NMDA $\zeta$ 1 (phospho Ser890) Polyclonal Antibody**

<b>Catalog No :</b>	YP1135
<b>Reactivity :</b>	Human;Mouse;Rat
<b>Applications :</b>	IHC;IF;ELISA
<b>Target :</b>	NMDAR1
<b>Fields :</b>	>>Ras signaling pathway;>>Rap1 signaling pathway;>>Calcium signaling pathway;>>cAMP signaling pathway;>>Neuroactive ligand-receptor interaction;>>Circadian entrainment;>>Long-term potentiation;>>Glutamatergic synapse;>>Alzheimer disease;>>Amyotrophic lateral sclerosis;>>Huntington disease;>>Spinocerebellar ataxia;>>Prion disease;>>Pathways of neurodegeneration - multiple diseases;>>Cocaine addiction;>>Amphetamine addiction;>>Nicotine addiction;>>Alcoholism
<b>Gene Name :</b>	GRIN1
<b>Protein Name :</b>	Glutamate [NMDA] receptor subunit zeta-1
<b>Human Gene Id :</b>	2902
<b>Human Swiss Prot No :</b>	Q05586
<b>Mouse Gene Id :</b>	14810
<b>Mouse Swiss Prot No :</b>	P35438
<b>Rat Gene Id :</b>	24408
<b>Rat Swiss Prot No :</b>	P35439
<b>Immunogen :</b>	The antiserum was produced against synthesized peptide derived from human NMDAR1 around the phosphorylation site of Ser890. AA range:856-905
<b>Specificity :</b>	Phospho-NMDA $\zeta$ 1 (S890) Polyclonal Antibody detects endogenous levels of NMDA $\zeta$ 1 protein only when phosphorylated at S890.  Liquid in PBS containing 50% glycerol, 0.5% BSA and 0.02% sodium azide.

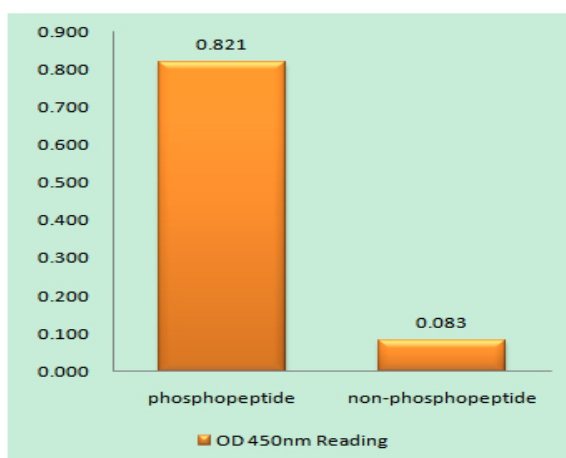
<b>Formulation :</b>	Polyclonal, Rabbit,IgG
<b>Dilution :</b>	IHC 1:100 - 1:300. IF 1:200 - 1:1000. ELISA: 1:40000. Not yet tested in other applications.
<b>Purification :</b>	The antibody was affinity-purified from rabbit antiserum by affinity-chromatography using epitope-specific immunogen.
<b>Concentration :</b>	1 mg/ml
<b>Storage Stability :</b>	-15°C to -25°C/1 year(Do not lower than -25°C)
<b>Molecularweight :</b>	105kD
<b>Cell Pathway :</b>	Calcium;Neuroactive ligand-receptor interaction;Long-term potentiation;Alzheimer's disease;Amyotrophic lateral sclerosis (ALS);Huntington's disease;
<b>Background :</b>	The protein encoded by this gene is a critical subunit of N-methyl-D-aspartate receptors, members of the glutamate receptor channel superfamily which are heteromeric protein complexes with multiple subunits arranged to form a ligand-gated ion channel. These subunits play a key role in the plasticity of synapses, which is believed to underlie memory and learning. Cell-specific factors are thought to control expression of different isoforms, possibly contributing to the functional diversity of the subunits. Alternatively spliced transcript variants have been described. [provided by RefSeq, Jul 2008],
<b>Function :</b>	function:NMDA receptor subtype of glutamate-gated ion channels with high calcium permeability and voltage-dependent sensitivity to magnesium. Mediated by glycine. This protein plays a key role in synaptic plasticity, synaptogenesis, excitotoxicity, memory acquisition and learning. It mediates neuronal functions in glutamate neurotransmission. Is involved in the cell surface targeting of NMDA receptors.,online information:NMDA receptor entry,PTM:NMDA is probably regulated by C-terminal phosphorylation of an isoform of NR1 by PKC. Dephosphorylated on Ser-897 probably by protein phosphatase 2A (PPP2CB). Its phosphorylated state is influenced by the formation of the NMDAR-PPP2CB complex and the NMDAR channel activity.,similarity:Belongs to the glutamate-gated ion channel (TC 1.A.10) family.,subcellular location:Enriched in post-synaptic plasma membrane and post-synaptic densities.,subunit:Fo
<b>Subcellular Location :</b>	Cell membrane ; Multi-pass membrane protein . Cell junction, synapse, postsynaptic cell membrane . Cell junction, synapse, postsynaptic density . Enriched in postsynaptic plasma membrane and postsynaptic densities. .
<b>Expression :</b>	Brain,Cerebellum,Hippocampus,

---

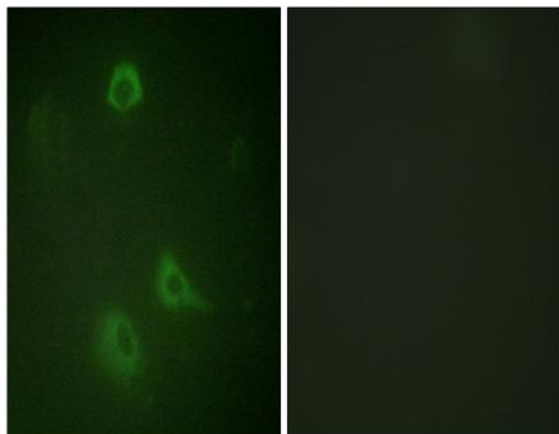
<b>Sort :</b>	10901
<b>No2 :</b>	3381S
<b>No4 :</b>	1
<b>Host :</b>	Rabbit
<b>Modifications :</b>	Phospho

---

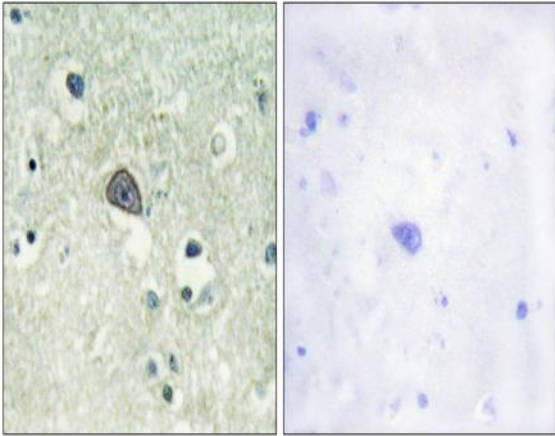
## Products Images



Enzyme-Linked Immunosorbent Assay (Phospho-ELISA) for Immunogen Phosphopeptide (Phospho-left) and Non-Phosphopeptide (Phospho-right), using NMDAR1 (Phospho-Ser890) Antibody



Immunofluorescence analysis of A549 cells, using NMDAR1 (Phospho-Ser890) Antibody. The picture on the right is blocked with the phospho peptide.



Immunohistochemistry analysis of paraffin-embedded human brain, using NMDAR1 (Phospho-Ser890) Antibody. The picture on the right is blocked with the phospho peptide.