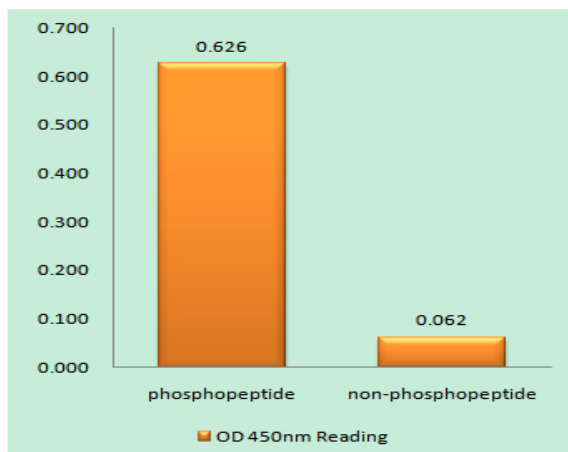


MLC-2 (phospho Thr17/S18) Polyclonal Antibody

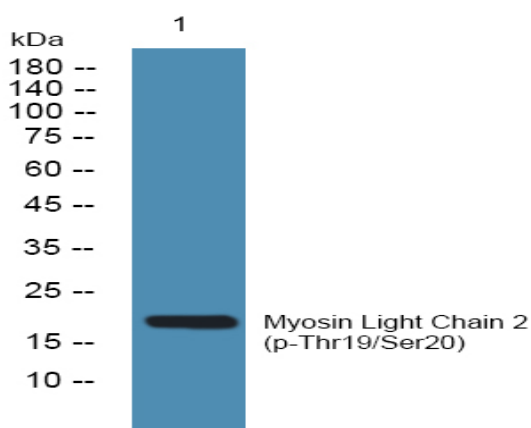
Catalog No :	YP0957
Reactivity :	Human;Mouse;Rat
Applications :	IHC;IF;ELISA
Target :	MLC-2
Fields :	>>Axon guidance;>>Focal adhesion;>>Tight junction;>>Platelet activation;>>Leukocyte transendothelial migration;>>Regulation of actin cytoskeleton;>>Shigellosis;>>Salmonella infection
Gene Name :	MYL12A
Protein Name :	Myosin regulatory light chain 12A
Human Gene Id :	10398/10627
Human Swiss Prot No :	P19105/O14950/P24844
Mouse Gene Id :	67938/98932
Rat Gene Id :	50685/296313
Rat Swiss Prot No :	P18666/Q64122
Immunogen :	The antiserum was produced against synthesized peptide derived from human MLC-2 around the phosphorylation site of Thr17 and Ser18. AA range:5-54
Specificity :	Phospho-MLC-2 (T17/S18) Polyclonal Antibody detects endogenous levels of MLC-2 protein only when phosphorylated at T17/S18.
Formulation :	Liquid in PBS containing 50% glycerol, 0.5% BSA and 0.02% sodium azide.
Source :	Polyclonal, Rabbit,IgG
Dilution :	IHC 1:100 - 1:300. ELISA: 1:10000.. IF 1:50-200

Purification :	The antibody was affinity-purified from rabbit antiserum by affinity-chromatography using epitope-specific immunogen.
Concentration :	1 mg/ml
Storage Stability :	-15°C to -25°C/1 year(Do not lower than -25°C)
Molecularweight :	20kD
Cell Pathway :	Focal adhesion;Tight junction;Leukocyte transendothelial migration;Regulates Actin and Cytoskeleton;
Background :	This gene encodes a nonsarcomeric myosin regulatory light chain. This protein is activated by phosphorylation and regulates smooth muscle and non-muscle cell contraction. This protein may also be involved in DNA damage repair by sequestering the transcriptional regulator apoptosis-antagonizing transcription factor (AATF)/Che-1 which functions as a repressor of p53-driven apoptosis. Alternate splicing results in multiple transcript variants. A pseudogene of this gene is found on chromosome 8.[provided by RefSeq, Dec 2014],
Function :	function:Myosin regulatory subunit that plays an important role in regulation of both smooth muscle and nonmuscle cell contractile activity via its phosphorylation. Implicated in cytokinesis, receptor capping, and cell locomotion.,miscellaneous:This chain binds calcium.,PTM:Phosphorylation increases the actin-activated myosin ATPase activity and thereby regulates the contractile activity. It is required to generate the driving force in the migration of the cells but not necessary for localization of myosin-2 at the leading edge.,similarity:Contains 3 EF-hand domains.,subunit:Myosin is a hexamer of 2 heavy chains and 4 light chains.,
Subcellular Location :	stress fiber,cytosol,brush border,myosin complex,myosin II complex,Z disc,apical part of cell,extracellular exosome,
Expression :	Coronary artery,Epithelium,Placenta,Skeletal muscle,Skin,Testis,
Sort :	9668
No4 :	1
Host :	Rabbit
Modifications :	Phospho

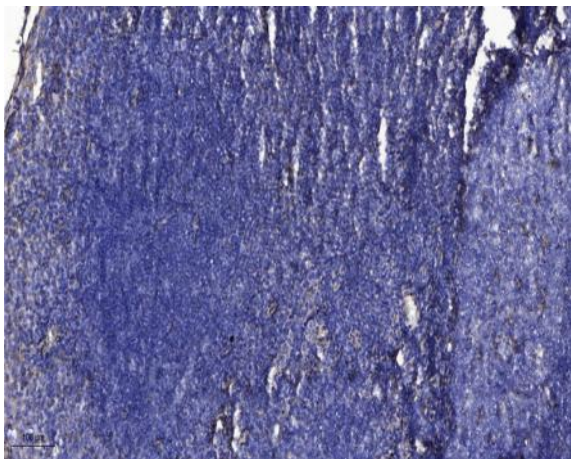
Products Images



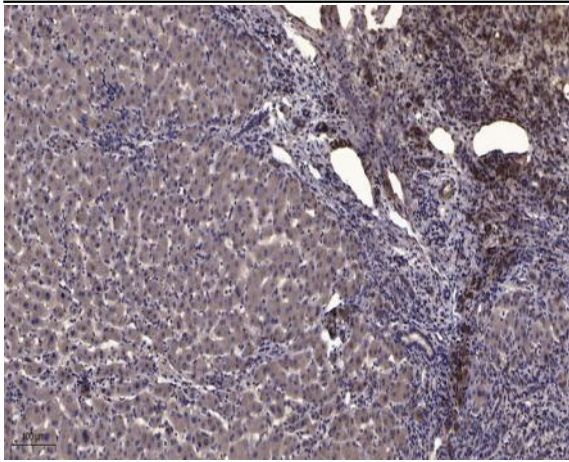
Enzyme-Linked Immunosorbent Assay (Phospho-ELISA) for Immunogen Phosphopeptide (Phospho-left) and Non-Phosphopeptide (Phospho-right), using MLC-2 (Phospho-Thr17+Ser18) Antibody



Western blot analysis of lysates from SW480 cells, primary antibody was diluted at 1:1000, 4° over night



Immunohistochemical analysis of paraffin-embedded human tonsil. 1, Antibody was diluted at 1:200(4° overnight). 2, Tris-EDTA,pH9.0 was used for antigen retrieval. 3,Secondary antibody was diluted at 1:200(room temperature, 30min).



Immunohistochemical analysis of paraffin-embedded human liver cancer. 1, Antibody was diluted at 1:200(4° overnight). 2, Tris-EDTA,pH9.0 was used for antigen retrieval. 3,Secondary antibody was diluted at 1:200(room temperature, 45min).