

**DARPP-32 (phospho Thr34) Polyclonal Antibody**

<b>Catalog No :</b>	YP0950
<b>Reactivity :</b>	Human;Mouse;Rat
<b>Applications :</b>	WB;IHC;IF;ELISA
<b>Target :</b>	DARPP-32
<b>Fields :</b>	>>cAMP signaling pathway;>>Dopaminergic synapse;>>Cocaine addiction;>>Amphetamine addiction;>>Alcoholism
<b>Gene Name :</b>	PPP1R1B
<b>Protein Name :</b>	Protein phosphatase 1 regulatory subunit 1B
<b>Human Gene Id :</b>	84152
<b>Human Swiss Prot No :</b>	Q9UD71
<b>Mouse Gene Id :</b>	19049
<b>Mouse Swiss Prot No :</b>	Q60829
<b>Rat Gene Id :</b>	360616
<b>Rat Swiss Prot No :</b>	Q6J4I0
<b>Immunogen :</b>	The antiserum was produced against synthesized peptide derived from human DARPP-32 around the phosphorylation site of Thr34. AA range:18-67
<b>Specificity :</b>	Phospho-DARPP-32 (T34) Polyclonal Antibody detects endogenous levels of DARPP-32 protein only when phosphorylated at T34.
<b>Formulation :</b>	Liquid in PBS containing 50% glycerol, 0.5% BSA and 0.02% sodium azide.
<b>Source :</b>	Polyclonal, Rabbit,IgG
<b>Dilution :</b>	WB 1:500 - 1:2000. IHC 1:100 - 1:300. IF 1:200 - 1:1000. ELISA: 1:10000. Not

yet tested in other applications.

---

**Purification :** The antibody was affinity-purified from rabbit antiserum by affinity-chromatography using epitope-specific immunogen.

---

**Concentration :** 1 mg/ml

---

**Storage Stability :** -15°C to -25°C/1 year(Do not lower than -25°C)

---

**Observed Band :** 35kD

---

**Background :** This gene encodes a bifunctional signal transduction molecule. Dopaminergic and glutamatergic receptor stimulation regulates its phosphorylation and function as a kinase or phosphatase inhibitor. As a target for dopamine, this gene may serve as a therapeutic target for neurologic and psychiatric disorders. Multiple transcript variants encoding different isoforms have been found for this gene. [provided by RefSeq, Oct 2011],

---

**Function :** function:Inhibitor of protein-phosphatase 1.,PTM:Dopamine- and cyclic AMP-regulated neuronal phosphoprotein.,PTM:Phosphorylation of Thr-34 is required for activity.,similarity:Belongs to the protein phosphatase inhibitor 1 family.,

---

**Subcellular Location :** Cytoplasm.

---

**Expression :** Adipose tissue,Brain,Cerebellum,Colon,Ovary,

---

**Tag :** orthogonal

---

**Sort :** 4997

---

**No2 :** 12438S

---

**No4 :** 1

---

**Host :** Rabbit

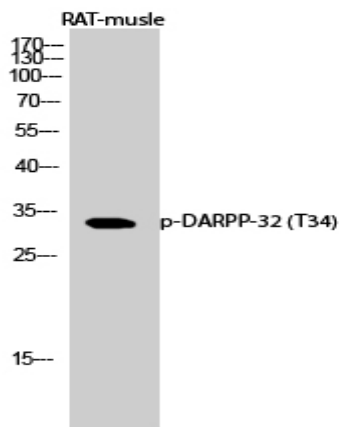
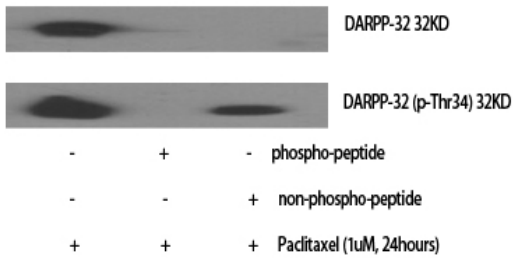
---

**Modifications :** Phospho

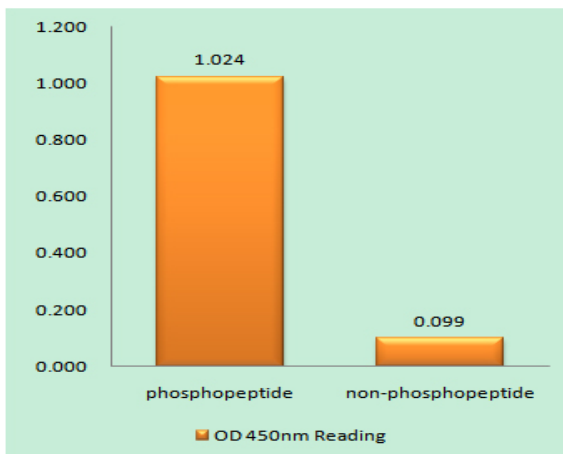
---

**Products Images**

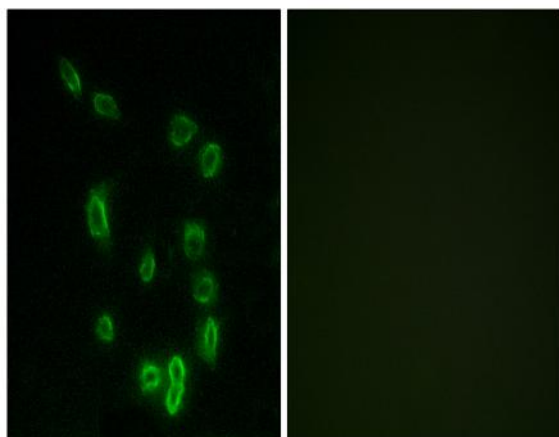
Western Blot analysis of various cells using Phospho-DARPP-32 (T34) Polyclonal Antibody diluted at 1:1000



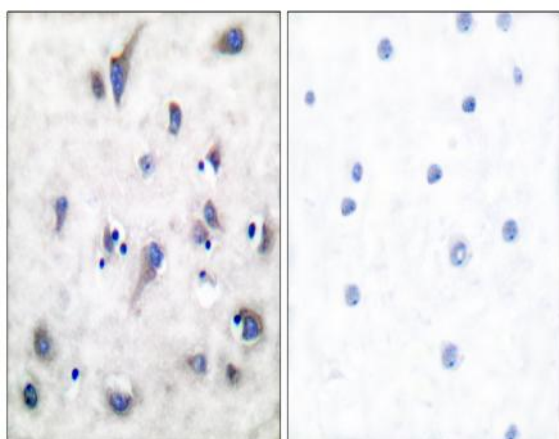
Western Blot analysis of RAT-muscle cells using Phospho-DARPP-32 (T34) Polyclonal Antibody diluted at 1:1000



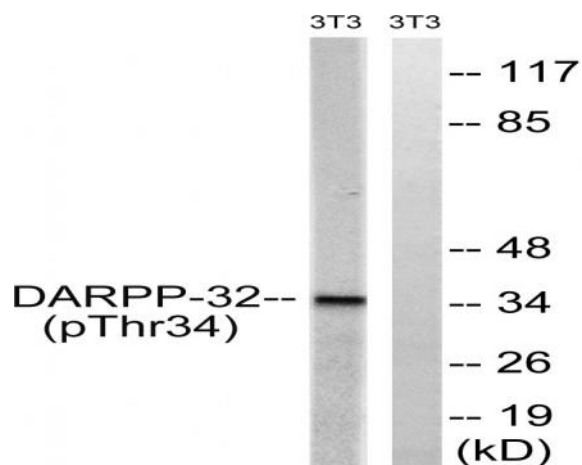
Enzyme-Linked Immunosorbent Assay (Phospho-ELISA) for Immunogen Phosphopeptide (Phospho-left) and Non-Phosphopeptide (Phospho-right), using DARPP-32 (Phospho-Thr34) Antibody



Immunofluorescence analysis of HepG2 cells, using DARPP-32 (Phospho-Thr34) Antibody. The picture on the right is blocked with the phospho peptide.



Immunohistochemistry analysis of paraffin-embedded human brain, using DARPP-32 (Phospho-Thr34) Antibody. The picture on the right is blocked with the phospho peptide.



Western blot analysis of lysates from NIH/3T3 cells treated with PMA 125ng/ml 30', using DARPP-32 (Phospho-Thr34) Antibody. The lane on the right is blocked with the phospho peptide.