

APLF (phospho Ser116) Polyclonal Antibody

Catalog No :	YP1078
Reactivity :	Human;Mouse
Applications :	IHC;IF;ELISA
Target :	APLF
Gene Name :	APLF
Protein Name :	Aprataxin and PNK-like factor
Human Gene Id :	200558
Human Swiss Prot No :	Q8IW19
Mouse Gene Id :	72103
Mouse Swiss Prot No :	Q9D842
Immunogen :	The antiserum was produced against synthesized peptide derived from human APLF around the phosphorylation site of Ser116. AA range:82-131
Specificity :	Phospho-APLF (S116) Polyclonal Antibody detects endogenous levels of APLF protein only when phosphorylated at S116.
Formulation :	Liquid in PBS containing 50% glycerol, 0.5% BSA and 0.02% sodium azide.
Source :	Polyclonal, Rabbit,IgG
Dilution :	IHC 1:100 - 1:300. ELISA: 1:5000.. IF 1:50-200
Purification :	The antibody was affinity-purified from rabbit antiserum by affinity-chromatography using epitope-specific immunogen.
Concentration :	1 mg/ml
Storage Stability :	-15°C to -25°C/1 year(Do not lower than -25°C)

Molecularweight : 57kD

Background : C2ORF13 is a component of the cellular response to chromosomal DNA single- and double-strand breaks (Iles et al., 2007 [PubMed 17353262]).[supplied by OMIM, Mar 2008],

Function : domain:The FHA-like domain mediates interaction with XRCC1 and XRCC4.,function:Involved in single-strand and double-strand DNA break repair.,PTM:Phosphorylated in an ATM-dependent manner upon double-strand DNA break.,similarity:Contains 1 FHA-like domain.,similarity:Contains 2 C2H2-type zinc fingers.,subcellular location:Colocalizes with XRCC1 at sites of DNA damage.,subunit:Interacts with XRCC1. May also interact with XRCC4 and XRCC5.,

Subcellular Location : Nucleus . Chromosome . Cytoplasm, cytosol . Localizes to DNA damage sites (PubMed:18474613, PubMed:18172500, PubMed:21211721, PubMed:23689425). Accumulates at single-strand breaks and double-strand breaks via the PBZ-type zinc fingers (PubMed:18172500). .

Expression : Testis,

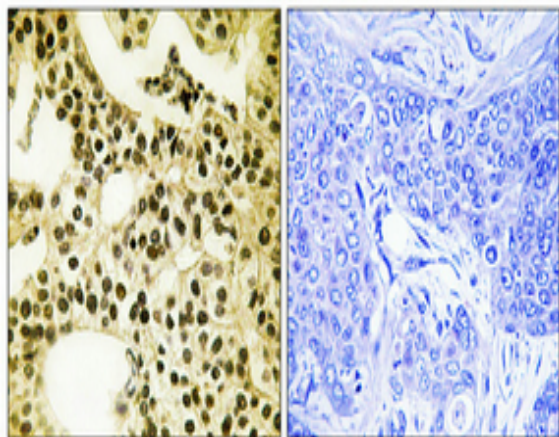
Sort : 2130

No4 : 1

Host : Rabbit

Modifications : Phospho

Products Images



Immunohistochemical analysis of paraffin-embedded Human breast cancer. Antibody was diluted at 1:100(4° overnight). High-pressure and temperature Tris-EDTA,pH8.0 was used for antigen retrieval. Negative contrl (right) obtained from antibody was pre-absorbed by immunogen peptide.