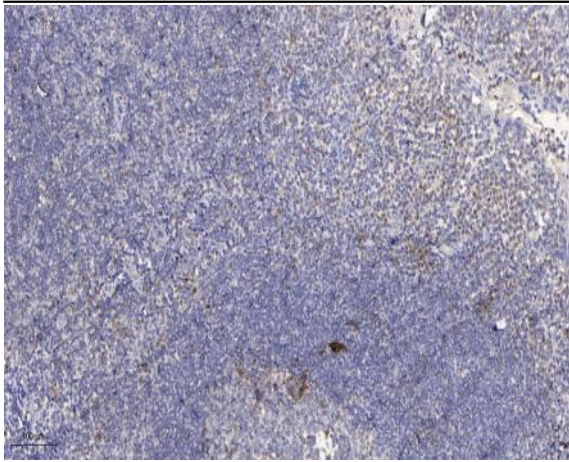


GCN2 (phospho Thr899) Polyclonal Antibody

Catalog No :	YP1042
Reactivity :	Human;Mouse
Applications :	IHC;IF;ELISA
Target :	GCN2
Fields :	>>Autophagy - animal;>>Protein processing in endoplasmic reticulum;>>Hepatitis C;>>Measles;>>Herpes simplex virus 1 infection
Gene Name :	EIF2AK4
Protein Name :	Eukaryotic translation initiation factor 2-alpha kinase 4
Human Gene Id :	440275
Human Swiss Prot No :	Q9P2K8
Mouse Gene Id :	27103
Mouse Swiss Prot No :	Q9QZ05
Immunogen :	The antiserum was produced against synthesized peptide derived from human GCN2 around the phosphorylation site of Thr899. AA range:865-914
Specificity :	Phospho-GCN2 (T899) Polyclonal Antibody detects endogenous levels of GCN2 protein only when phosphorylated at T899.
Formulation :	Liquid in PBS containing 50% glycerol, 0.5% BSA and 0.02% sodium azide.
Source :	Polyclonal, Rabbit,IgG
Dilution :	IHC 1:100 - 1:300. ELISA: 1:5000.. IF 1:50-200
Purification :	The antibody was affinity-purified from rabbit antiserum by affinity-chromatography using epitope-specific immunogen.

Concentration :	1 mg/ml
Storage Stability :	-15°C to -25°C/1 year(Do not lower than -25°C)
Molecularweight :	187kD
Background :	This gene encodes a member of a family of kinases that phosphorylate the alpha subunit of eukaryotic translation initiation factor-2 (EIF2), resulting in the downregulation of protein synthesis. The encoded protein responds to amino acid deprivation by binding uncharged transfer RNAs. It may also be activated by glucose deprivation and viral infection. Mutations in this gene have been found in individuals suffering from autosomal recessive pulmonary venoocclusive-disease-2. [provided by RefSeq, Mar 2014],
Function :	catalytic activity:ATP + a protein = ADP + a phosphoprotein.,domain:Kinase domain 1 is a degenerate kinase domain.,domain:RWD domain is reported to interact with GCN1L1.,function:Can phosphorylate the alpha subunit of EIF2 and may mediate translational control.,PTM:Autophosphorylated on threonine residues.,similarity:Belongs to the protein kinase superfamily. Ser/Thr protein kinase family. GCN2 subfamily.,similarity:Contains 1 RWD domain.,similarity:Contains 2 protein kinase domains.,tissue specificity:Widely expressed.,
Subcellular Location :	Cytoplasm .
Expression :	Widely expressed (PubMed:10504407). Expressed in lung, smooth muscle cells and macrophages (PubMed:24292273).
Sort :	6509
No4 :	1
Host :	Rabbit
Modifications :	Phospho

Products Images



Immunohistochemical analysis of paraffin-embedded human tonsil. 1, Antibody was diluted at 1:200(4° overnight). 2, Tris-EDTA,pH9.0 was used for antigen retrieval. 3,Secondary antibody was diluted at 1:200(room temperature, 30min).