

**Crk-L (phospho Tyr207) Polyclonal Antibody**

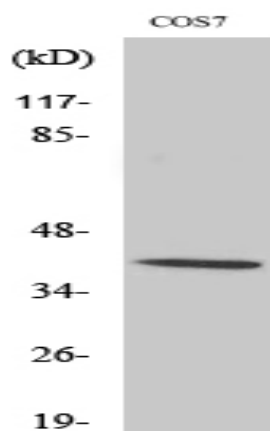
<b>Catalog No :</b>	YP0869
<b>Reactivity :</b>	Human;Mouse;Rat;Monkey
<b>Applications :</b>	WB;IHC;IF;ELISA
<b>Target :</b>	Crk-L
<b>Fields :</b>	>>MAPK signaling pathway;>>ErbB signaling pathway;>>Rap1 signaling pathway;>>Chemokine signaling pathway;>>Focal adhesion;>>Fc gamma R-mediated phagocytosis;>>Neurotrophin signaling pathway;>>Regulation of actin cytoskeleton;>>Insulin signaling pathway;>>Growth hormone synthesis, secretion and action;>>Bacterial invasion of epithelial cells;>>Shigellosis;>>Yersinia infection;>>Human cytomegalovirus infection;>>Human immunodeficiency virus 1 infection;>>Pathways in cancer;>>MicroRNAs in cancer;>>Renal cell carcinoma;>>Chronic myeloid leukemia
<b>Gene Name :</b>	CRKL
<b>Protein Name :</b>	Crk-like protein
<b>Human Gene Id :</b>	1399
<b>Human Swiss Prot No :</b>	P46109
<b>Mouse Gene Id :</b>	12929
<b>Mouse Swiss Prot No :</b>	P47941
<b>Rat Gene Id :</b>	1.00911e+008
<b>Rat Swiss Prot No :</b>	Q5U2U2
<b>Immunogen :</b>	The antiserum was produced against synthesized peptide derived from human CrkL around the phosphorylation site of Tyr207. AA range:173-222
<b>Specificity :</b>	Phospho-Crk-L (Y207) Polyclonal Antibody detects endogenous levels of Crk-L protein only when phosphorylated at Y207.

---

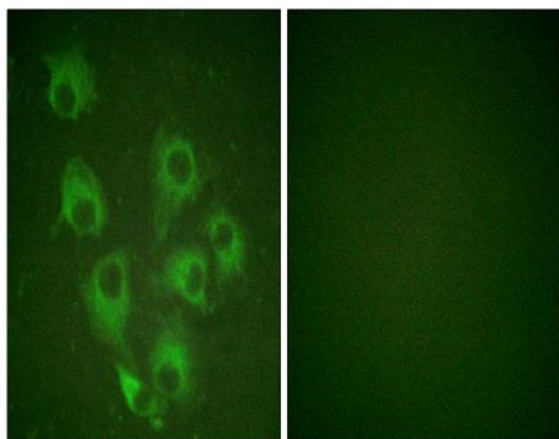
<b>Formulation :</b>	Liquid in PBS containing 50% glycerol, 0.5% BSA and 0.02% sodium azide.
<b>Source :</b>	Polyclonal, Rabbit,IgG
<b>Dilution :</b>	WB 1:500 - 1:2000. IHC 1:100 - 1:300. IF 1:200 - 1:1000. ELISA: 1:5000. Not yet tested in other applications.
<b>Purification :</b>	The antibody was affinity-purified from rabbit antiserum by affinity-chromatography using epitope-specific immunogen.
<b>Concentration :</b>	1 mg/ml
<b>Storage Stability :</b>	-15°C to -25°C/1 year(Do not lower than -25°C)
<b>Observed Band :</b>	39kD
<b>Cell Pathway :</b>	MAPK_ERK_Growth;MAPK_G_Protein;ErbB_HER;Chemokine;Focal adhesion;Fc gamma R-mediated phagocytosis;Neurotrophin;Regulates Actin and Cytoskeleton;Insulin_Receptor;Pathways in cancer;Renal cell carcinoma
<b>Background :</b>	This gene encodes a protein kinase containing SH2 and SH3 (src homology) domains which has been shown to activate the RAS and JUN kinase signaling pathways and transform fibroblasts in a RAS-dependent fashion. It is a substrate of the BCR-ABL tyrosine kinase, plays a role in fibroblast transformation by BCR-ABL, and may be oncogenic.[provided by RefSeq, Jan 2009],
<b>Function :</b>	function:May mediate the transduction of intracellular signals.,similarity:Contains 1 SH2 domain.,similarity:Contains 2 SH3 domains.,subunit:Interacts with INPP5D/SHIP1. Interacts with DOCK2 and EPOR. Interacts with phosphorylated CBLB and IRS4.,
<b>Subcellular Location :</b>	endosome,cytosol,cell-cell adherens junction,extracellular exosome,
<b>Expression :</b>	Skin,Spleen,
<b>Sort :</b>	4576
<b>No2 :</b>	3181L
<b>No4 :</b>	1
<b>Host :</b>	Rabbit
<b>Modifications :</b>	Phospho

---

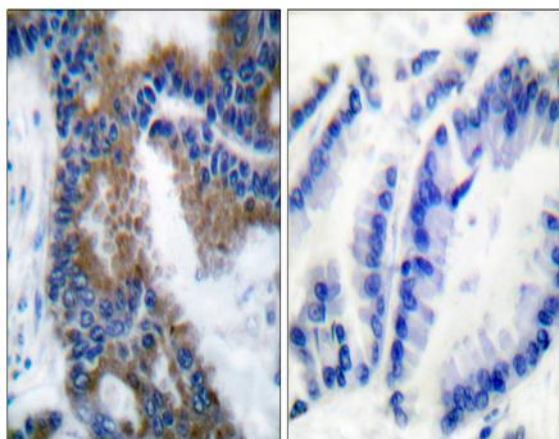
## Products Images



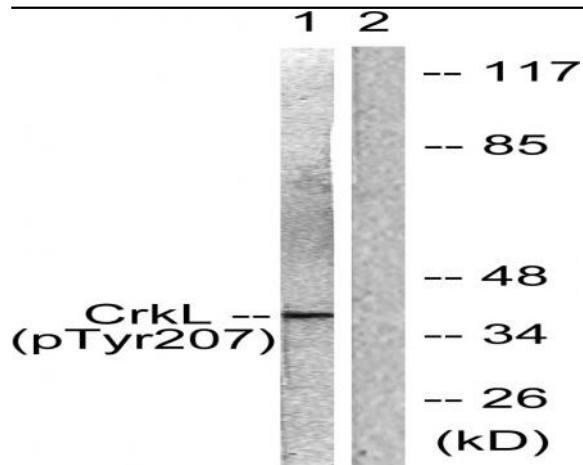
Western Blot analysis of various cells using Phospho-Crk-L (Y207) Polyclonal Antibody



Immunofluorescence analysis of HUVEC cells, using CrkL (Phospho-Tyr207) Antibody. The picture on the right is blocked with the phospho peptide.



Immunohistochemistry analysis of paraffin-embedded human lung carcinoma, using CrkL (Phospho-Tyr207) Antibody. The picture on the right is blocked with the phospho peptide.



Western blot analysis of lysates from COS7 cells, using CrkL (Phospho-Tyr207) Antibody. The lane on the right is blocked with the phospho peptide.