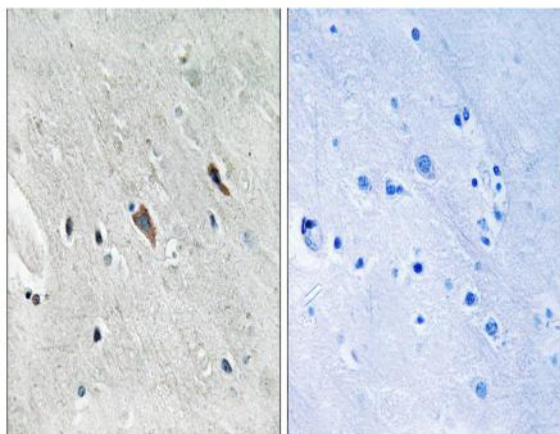


Gab 2 (phospho Tyr643) Polyclonal Antibody

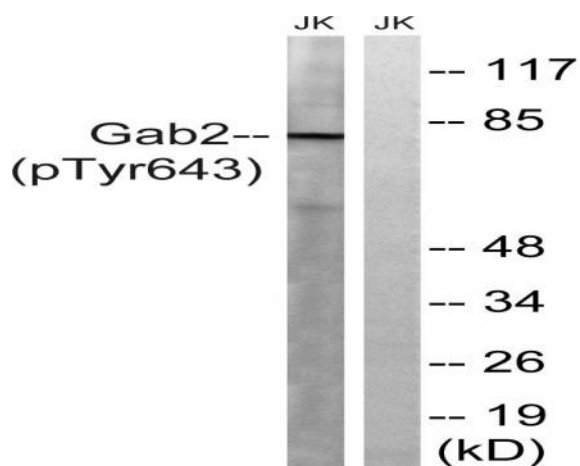
Catalog No :	YP0817
Reactivity :	Human;Mouse;Rat
Applications :	WB;IHC;IF;ELISA
Target :	Gab2
Fields :	>>Ras signaling pathway;>>Sphingolipid signaling pathway;>>Phospholipase D signaling pathway;>>Osteoclast differentiation;>>Fc epsilon RI signaling pathway;>>Fc gamma R-mediated phagocytosis;>>Chronic myeloid leukemia
Gene Name :	GAB2
Protein Name :	GRB2-associated-binding protein 2
Human Gene Id :	9846
Human Swiss Prot No :	Q9UQC2
Mouse Swiss Prot No :	Q9Z1S8
Rat Gene Id :	84477
Rat Swiss Prot No :	Q9EQH1
Immunogen :	The antiserum was produced against synthesized peptide derived from human Gab2 around the phosphorylation site of Tyr643. AA range:609-658
Specificity :	Phospho-Gab 2 (Y643) Polyclonal Antibody detects endogenous levels of Gab 2 protein only when phosphorylated at Y643.
Formulation :	Liquid in PBS containing 50% glycerol, 0.5% BSA and 0.02% sodium azide.
Source :	Polyclonal, Rabbit,IgG
Dilution :	WB 1:500 - 1:2000. IHC 1:100 - 1:300. ELISA: 1:40000.. IF 1:50-200

Purification :	The antibody was affinity-purified from rabbit antiserum by affinity-chromatography using epitope-specific immunogen.
Concentration :	1 mg/ml
Storage Stability :	-15°C to -25°C/1 year(Do not lower than -25°C)
Observed Band :	74kD
Cell Pathway :	Fc epsilon RI;Fc gamma R-mediated phagocytosis;Chronic myeloid leukemia;
Background :	GRB2 associated binding protein 2(GAB2) Homo sapiens This gene is a member of the GRB2-associated binding protein (GAB) gene family. These proteins contain pleckstrin homology (PH) domain, and bind SHP2 tyrosine phosphatase and GRB2 adapter protein. They act as adapters for transmitting various signals in response to stimuli through cytokine and growth factor receptors, and T- and B-cell antigen receptors. The protein encoded by this gene is the principal activator of phosphatidylinositol-3 kinase in response to activation of the high affinity IgE receptor. Two alternatively spliced transcripts encoding different isoforms have been described for this gene. [provided by RefSeq, Nov 2009],
Function :	PTM:Dephosphorylated by PTPN11.,PTM:Phosphorylated on tyrosine residue(s) by the thrombopoietin receptor (TPOR), stem cell factor receptor (SCFR), and T-cell and B-cell antigen receptors, gp130, IL-2R and IL-3R.,similarity:Belongs to the GAB family.,similarity:Contains 1 PH domain.,subunit:Interacts with GRB2, PI-3 kinase and with other SH2-containing proteins.,
Subcellular Location :	Cytoplasm . Cell membrane .
Expression :	Brain,Clones donated by Kazusa DNA Research Inst.,
Tag :	orthogonal,hot
Sort :	6354
No4 :	1
Host :	Rabbit
Modifications :	Phospho

Products Images



Immunohistochemistry analysis of paraffin-embedded human brain, using Gab2 (Phospho-Tyr643) Antibody. The picture on the right is blocked with the phospho peptide.



Western blot analysis of lysates from Jurkat cells treated with IFN 2500U/ML 30', using Gab2 (Phospho-Tyr643) Antibody. The lane on the right is blocked with the phospho peptide.