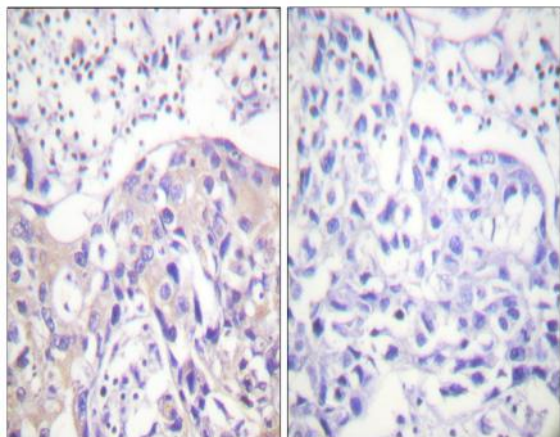


## Adducin $\alpha$ (phospho Thr445) Polyclonal Antibody

<b>Catalog No :</b>	YP0955
<b>Reactivity :</b>	Human;Mouse;Rat
<b>Applications :</b>	IHC;IF;ELISA
<b>Target :</b>	Adducin $\alpha$
<b>Gene Name :</b>	ADD1
<b>Protein Name :</b>	Alpha-adducin
<b>Human Gene Id :</b>	118
<b>Human Swiss Prot No :</b>	P35611
<b>Mouse Gene Id :</b>	11518
<b>Mouse Swiss Prot No :</b>	Q9QYC0
<b>Rat Gene Id :</b>	24170
<b>Rat Swiss Prot No :</b>	Q63028
<b>Immunogen :</b>	The antiserum was produced against synthesized peptide derived from human ADD1 around the phosphorylation site of Thr445. AA range:411-460
<b>Specificity :</b>	Phospho-Adducin $\alpha$ (T445) Polyclonal Antibody detects endogenous levels of Adducin $\alpha$ protein only when phosphorylated at T445.
<b>Formulation :</b>	Liquid in PBS containing 50% glycerol, 0.5% BSA and 0.02% sodium azide.
<b>Source :</b>	Polyclonal, Rabbit,IgG
<b>Dilution :</b>	IHC 1:100 - 1:300. ELISA: 1:5000.. IF 1:50-200
<b>Purification :</b>	The antibody was affinity-purified from rabbit antiserum by affinity-chromatography using epitope-specific immunogen.

<b>Concentration :</b>	1 mg/ml
<b>Storage Stability :</b>	-15°C to -25°C/1 year(Do not lower than -25°C)
<b>Molecularweight :</b>	81kD
<b>Background :</b>	<p>adducin 1 (ADD1) Homo sapiens Adducins are a family of cytoskeleton proteins encoded by three genes (alpha, beta, gamma). Adducin is a heterodimeric protein that consists of related subunits, which are produced from distinct genes but share a similar structure. Alpha- and beta-adducin include a protease-resistant N-terminal region and a protease-sensitive, hydrophilic C-terminal region. Alpha- and gamma-adducins are ubiquitously expressed. In contrast, beta-adducin is expressed at high levels in brain and hematopoietic tissues. Adducin binds with high affinity to Ca(2+)/calmodulin and is a substrate for protein kinases A and C. Alternative splicing results in multiple variants encoding distinct isoforms; however, not all variants have been fully described. [provided by RefSeq, Jul 2008],</p>
<b>Function :</b>	<p>alternative products:Additional isoforms seem to exist,domain:Each subunit is comprised of three regions: a NH2-terminal protease-resistant globular head region, a short connecting subdomain, and a protease-sensitive tail region.,function:Membrane-cytoskeleton-associated protein that promotes the assembly of the spectrin-actin network. Binds to calmodulin.,PTM:The N-terminus is blocked.,similarity:Belongs to the aldolase class II family. Adducin subfamily.,subunit:Heterodimer of an alpha and a beta subunit or an alpha and a gamma subunit. Binds ROCK1.,tissue specificity:Expressed in all tissues. Found in much higher levels in reticulocytes than the beta subunit.,</p>
<b>Subcellular Location :</b>	Cytoplasm, cytoskeleton. Cell membrane; Peripheral membrane protein; Cytoplasmic side.
<b>Expression :</b>	Expressed in all tissues. Found in much higher levels in reticulocytes than the beta subunit.
<b>Sort :</b>	1747
<b>No4 :</b>	1

## Products Images



Immunohistochemistry analysis of paraffin-embedded human breast carcinoma, using ADD1 (Phospho-Thr445) Antibody. The picture on the right is blocked with the phospho peptide.