

## Rho GDI $\alpha$ (phospho Ser174) Polyclonal Antibody

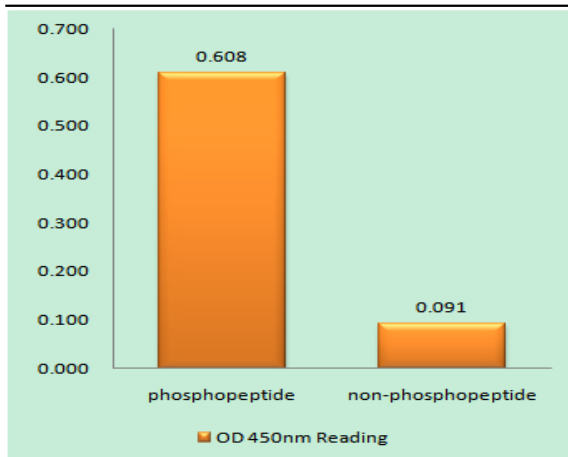
<b>Catalog No :</b>	YP0762
<b>Reactivity :</b>	Human;Mouse;Rat
<b>Applications :</b>	WB;IHC;IF;ELISA
<b>Target :</b>	Rho GDI $\alpha$
<b>Fields :</b>	>>Neurotrophin signaling pathway;>>Vasopressin-regulated water reabsorption
<b>Gene Name :</b>	ARHGDI $\alpha$
<b>Protein Name :</b>	Rho GDP-dissociation inhibitor 1
<b>Human Gene Id :</b>	396
<b>Human Swiss Prot No :</b>	P52565
<b>Mouse Gene Id :</b>	192662
<b>Mouse Swiss Prot No :</b>	Q99PT1
<b>Rat Gene Id :</b>	360678
<b>Rat Swiss Prot No :</b>	Q5XI73
<b>Immunogen :</b>	The antiserum was produced against synthesized peptide derived from human ARHGDI $\alpha$ around the phosphorylation site of Ser174. AA range:140-189
<b>Specificity :</b>	Phospho-Rho GDI $\alpha$ (S174) Polyclonal Antibody detects endogenous levels of Rho GDI $\alpha$ protein only when phosphorylated at S174.
<b>Formulation :</b>	Liquid in PBS containing 50% glycerol, 0.5% BSA and 0.02% sodium azide.
<b>Source :</b>	Polyclonal, Rabbit,IgG
<b>Dilution :</b>	WB 1:500 - 1:2000. IHC 1:100 - 1:300. ELISA: 1:20000.. IF 1:50-200

---

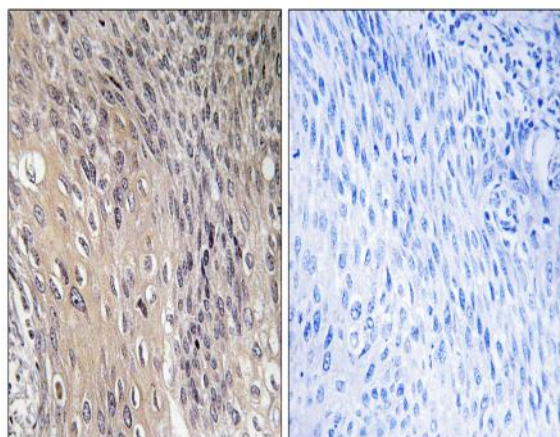
<b>Purification :</b>	The antibody was affinity-purified from rabbit antiserum by affinity-chromatography using epitope-specific immunogen.
<b>Concentration :</b>	1 mg/ml
<b>Storage Stability :</b>	-15°C to -25°C/1 year(Do not lower than -25°C)
<b>Observed Band :</b>	23kD
<b>Cell Pathway :</b>	Neurotrophin;
<b>Background :</b>	This gene encodes a protein that plays a key role in the regulation of signaling through Rho GTPases. The encoded protein inhibits the disassociation of Rho family members from GDP (guanine diphosphate), thereby maintaining these factors in an inactive state. Activity of this protein is important in a variety of cellular processes, and expression of this gene may be altered in tumors. Mutations in this gene have been found in individuals with nephrotic syndrome, type 8. Alternate splicing results in multiple transcript variants. [provided by RefSeq, Jul 2014],
<b>Function :</b>	function:Regulates the GDP/GTP exchange reaction of the Rho proteins by inhibiting the dissociation of GDP from them, and the subsequent binding of GTP to them.,similarity:Belongs to the Rho GDI family.,subunit:Monomer.,
<b>Subcellular Location :</b>	Cytoplasm .
<b>Expression :</b>	Brain,Cajal-Retzius cell,Colon,Epithelium,Fetal brain cortex,Lung,M
<b>Tag :</b>	orthogonal
<b>Sort :</b>	14446
<b>No4 :</b>	1
<b>Host :</b>	Rabbit
<b>Modifications :</b>	Phospho

---

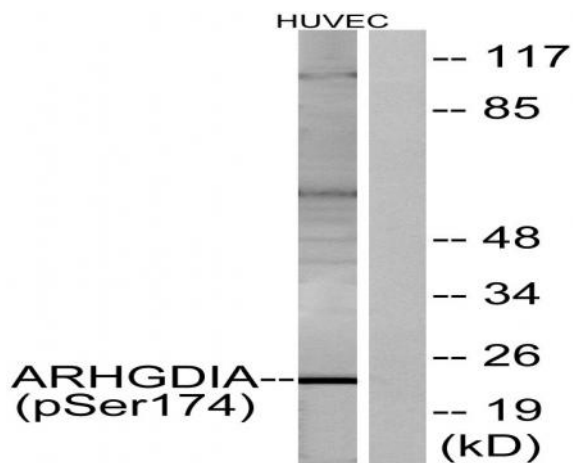
**Products Images**



Enzyme-Linked Immunosorbent Assay (Phospho-ELISA) for Immunogen Phosphopeptide (Phospho-left) and Non-Phosphopeptide (Phospho-right), using ARHGDIA (Phospho-Ser174) Antibody



Immunohistochemistry analysis of paraffin-embedded human cervix carcinoma, using ARHGDIA (Phospho-Ser174) Antibody. The picture on the right is blocked with the phospho peptide.



Western blot analysis of lysates from HUVEC cells treated with EGF 200ng/ml 30', using ARHGDIA (Phospho-Ser174) Antibody. The lane on the right is blocked with the phospho peptide.