

**14-3-3  $\theta/\tau$  (phospho Ser232) Polyclonal Antibody**

<b>Catalog No :</b>	YP0903
<b>Reactivity :</b>	Human;Mouse;Rat
<b>Applications :</b>	WB;IHC;IF;ELISA
<b>Target :</b>	14-3-3 $\theta/\tau$
<b>Fields :</b>	>>Cell cycle;>>Oocyte meiosis;>>PI3K-Akt signaling pathway;>>Hippo signaling pathway;>>Hepatitis C;>>Hepatitis B;>>Viral carcinogenesis
<b>Gene Name :</b>	YWHAQ
<b>Protein Name :</b>	14-3-3 protein theta
<b>Human Gene Id :</b>	5350
<b>Human Swiss Prot No :</b>	P27348
<b>Mouse Gene Id :</b>	22630
<b>Mouse Swiss Prot No :</b>	P68254
<b>Rat Gene Id :</b>	25577
<b>Rat Swiss Prot No :</b>	P68255
<b>Immunogen :</b>	The antiserum was produced against synthesized peptide derived from human 14-3-3 thet/tau around the phosphorylation site of Ser232. AA range:196-245
<b>Specificity :</b>	Phospho-14-3-3 $\theta/\tau$ (S232) Polyclonal Antibody detects endogenous levels of 14-3-3 $\theta/\tau$ protein only when phosphorylated at S232.
<b>Formulation :</b>	Liquid in PBS containing 50% glycerol, 0.5% BSA and 0.02% sodium azide.
<b>Source :</b>	Polyclonal, Rabbit,IgG
<b>Dilution :</b>	WB 1:500 - 1:2000. IHC 1:100 - 1:300. IF 1:200 - 1:1000. ELISA: 1:5000. Not

yet tested in other applications.

---

**Purification :** The antibody was affinity-purified from rabbit antiserum by affinity-chromatography using epitope-specific immunogen.

---

**Concentration :** 1 mg/ml

---

**Storage Stability :** -15°C to -25°C/1 year(Do not lower than -25°C)

---

**Observed Band :** 28kD

---

**Cell Pathway :** Cell\_Cycle\_G1S;Cell\_Cycle\_G2M\_DNA;Oocyte meiosis;Neurotrophin;Pathogenic Escherichia coli infection;

---

**Background :** This gene product belongs to the 14-3-3 family of proteins which mediate signal transduction by binding to phosphoserine-containing proteins. This highly conserved protein family is found in both plants and mammals, and this protein is 99% identical to the mouse and rat orthologs. This gene is upregulated in patients with amyotrophic lateral sclerosis. It contains in its 5' UTR a 6 bp tandem repeat sequence which is polymorphic, however, there is no correlation between the repeat number and the disease. [provided by RefSeq, Jul 2008],

---

**Function :** function:Adapter protein implicated in the regulation of a large spectrum of both general and specialized signaling pathway. Binds to a large number of partners, usually by recognition of a phosphoserine or phosphothreonine motif. Binding generally results in the modulation of the activity of the binding partner.,similarity:Belongs to the 14-3-3 family.,subcellular location:In neurons, axonally transported to the nerve terminals.,subunit:Homodimer. Interacts with PCK1 (By similarity). Interacts with SSH1. Interacts with CDKN1B ('Thr-198' phosphorylated form); the interaction translocates CDKN1B to the cytoplasm.,tissue specificity:Abundantly expressed in brain, heart and pancreas, and at lower levels in kidney and placenta. Up-regulated in the lumbar spinal cord from patients with sporadic amyotrophic lateral sclerosis (ALS) compared with controls, with highest levels of expression in i

---

**Subcellular Location :** Cytoplasm. In neurons, axonally transported to the nerve terminals.

---

**Expression :** Abundantly expressed in brain, heart and pancreas, and at lower levels in kidney and placenta. Up-regulated in the lumbar spinal cord from patients with sporadic amyotrophic lateral sclerosis (ALS) compared with controls, with highest levels of expression in individuals with predominant lower motor neuron involvement.

---

**Tag :** orthogonal,hot

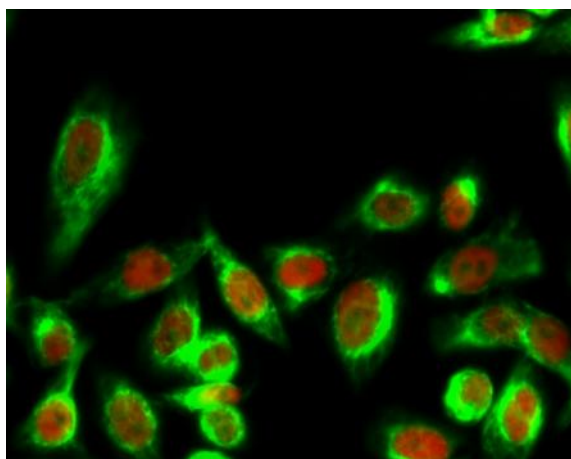
---

**Sort :** 1487

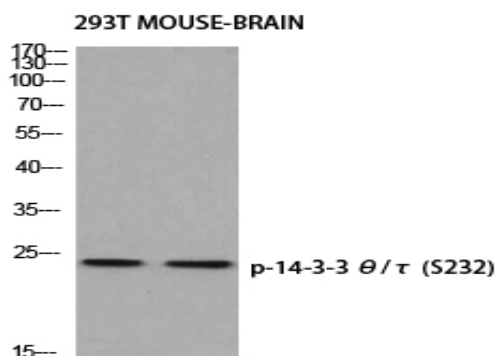
---

<b>No4 :</b>	1
<b>Host :</b>	Rabbit
<b>Modifications :</b>	Phospho

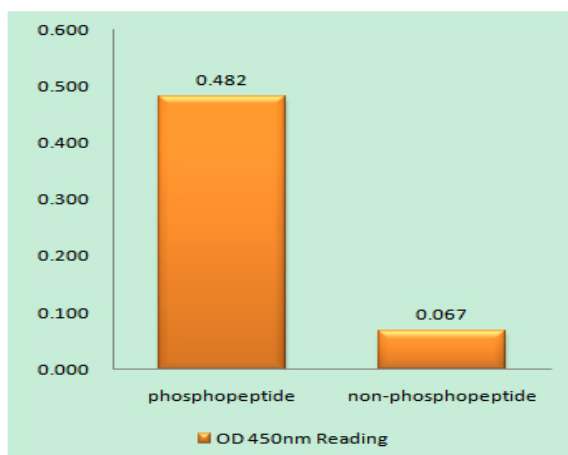
## Products Images



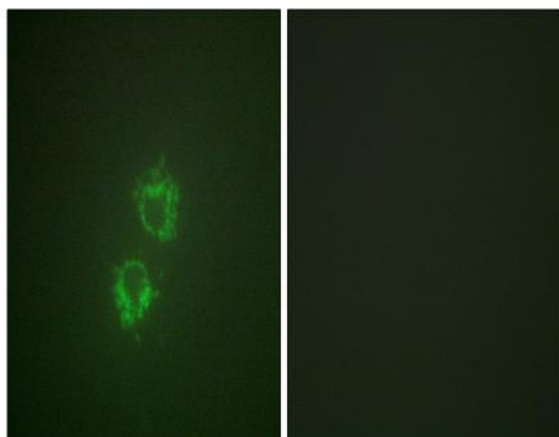
Immunofluorescence analysis of Hela cell. 1, 14-3-3  $\theta/\tau$  (phospho Ser232) Polyclonal Antibody (green) was diluted at 1:200 (4° overnight). (red) was diluted at 1:200 (4° overnight). 2, Goat Anti Rabbit Alexa Fluor 488 Catalog:RS3211 was diluted at 1:1000 (room temperature, 50min). Goat Anti Mouse Alexa Fluor 594 Catalog:RS3608 was diluted at 1:1000 (room temperature, 50min).



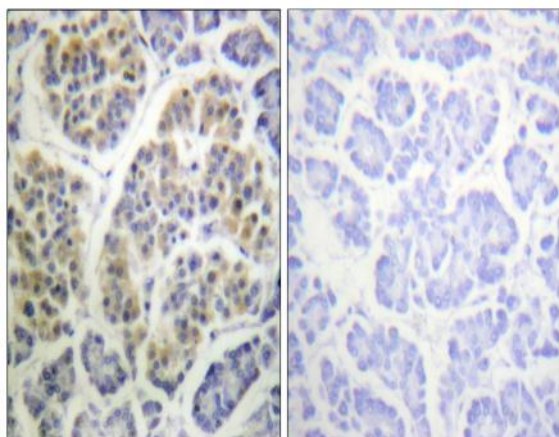
Western blot analysis of 293T MOUSE-BRAIN using p-14-3-3  $\theta/\tau$  (S232) antibody. Antibody was diluted at 1:500



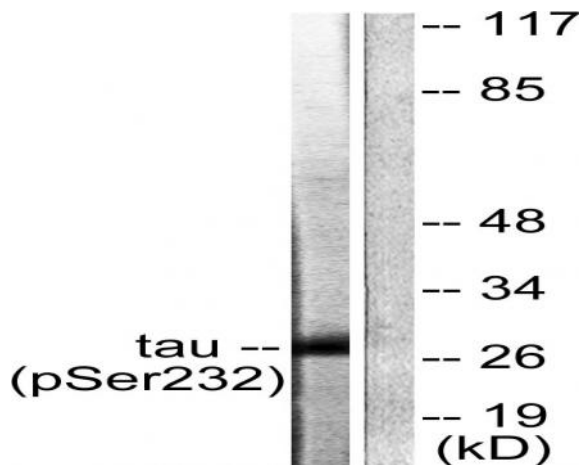
Enzyme-Linked Immunosorbent Assay (Phospho-ELISA) for Immunogen Phosphopeptide (Phospho-left) and Non-Phosphopeptide (Phospho-right), using 14-3-3  $\theta/\tau$  (Phospho-Ser232) Antibody



Immunofluorescence analysis of HeLa cells, using 14-3-3 thet/tau (Phospho-Ser232) Antibody. The picture on the right is blocked with the phospho peptide.



Immunohistochemistry analysis of paraffin-embedded human pancreas, using 14-3-3 thet/tau (Phospho-Ser232) Antibody. The picture on the right is blocked with the phospho peptide.



Western blot analysis of lysates from HeLa cells, using 14-3-3 thet/tau (Phospho-Ser232) Antibody. The lane on the right is blocked with the phospho peptide.