

Rabphilin-3A (phospho Ser237) Polyclonal Antibody

Catalog No :	YP0891
Reactivity :	Human;Mouse;Rat
Applications :	WB;IHC;IF;ELISA
Target :	Rabphilin 3A
Gene Name :	RPH3A
Protein Name :	Rabphilin-3A
Human Gene Id :	22895
Human Swiss Prot No :	Q9Y2J0
Mouse Gene Id :	19894
Mouse Swiss Prot No :	P47708
Rat Gene Id :	171039
Rat Swiss Prot No :	P47709
Immunogen :	The antiserum was produced against synthesized peptide derived from human Rabphilin 3A around the phosphorylation site of Ser237. AA range:203-252
Specificity :	Phospho-Rabphilin-3A (S237) Polyclonal Antibody detects endogenous levels of Rabphilin-3A protein only when phosphorylated at S237.
Formulation :	Liquid in PBS containing 50% glycerol, 0.5% BSA and 0.02% sodium azide.
Source :	Polyclonal, Rabbit,IgG
Dilution :	WB 1:500 - 1:2000. IHC 1:100 - 1:300. IF 1:200 - 1:1000. ELISA: 1:10000. Not yet tested in other applications.
Purification :	The antibody was affinity-purified from rabbit antiserum by affinity-

chromatography using epitope-specific immunogen.

Concentration : 1 mg/ml

Storage Stability : -15°C to -25°C/1 year(Do not lower than -25°C)

Observed Band : 75kD

Background : Exocytosis of neurotransmitters and hormones is fundamental to synaptic neurotransmission and cell-cell communication. RAB3A (MIM 179390) is a small G protein that is thought to act at late stages of exocytosis, and RPH3A is a RAB3A effector (Lin et al., 2007 [PubMed 17149709]).[supplied by OMIM, Jul 2008],

Function : function:Protein transport. Probably involved with Ras-related protein Rab-3A in synaptic vesicle traffic and/or synaptic vesicle fusion. Could play a role in neurotransmitter release by regulating membrane flow in the nerve terminal.,similarity:Contains 1 FYVE-type zinc finger.,similarity:Contains 1 RabBD (Rab-binding) domain.,similarity:Contains 2 C2 domains.,

Subcellular Location : Cytoplasmic vesicle, secretory vesicle, synaptic vesicle membrane . Cell projection, dendritic spine . Cell junction, synapse, postsynaptic cell membrane . Membrane ; Peripheral membrane protein .

Expression : Brain,Lung,

Tag : orthogonal,hot

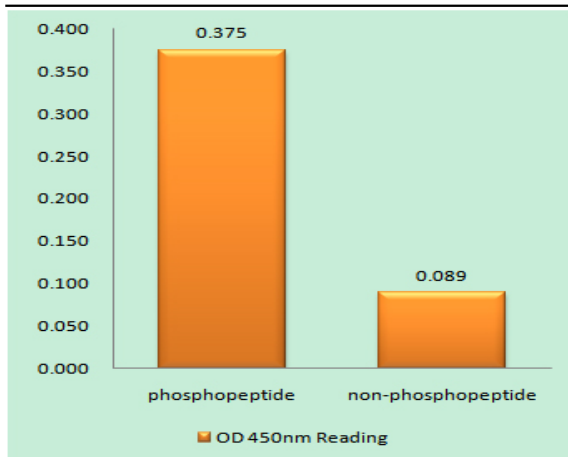
Sort : 13728

No4 : 1

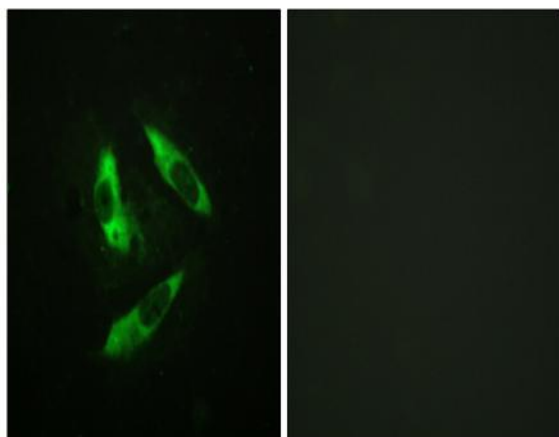
Host : Rabbit

Modifications : Phospho

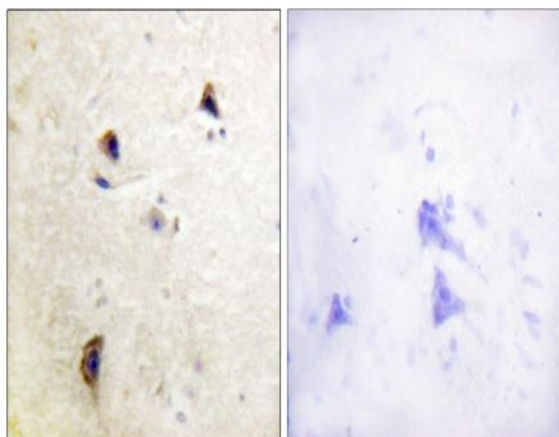
Products Images



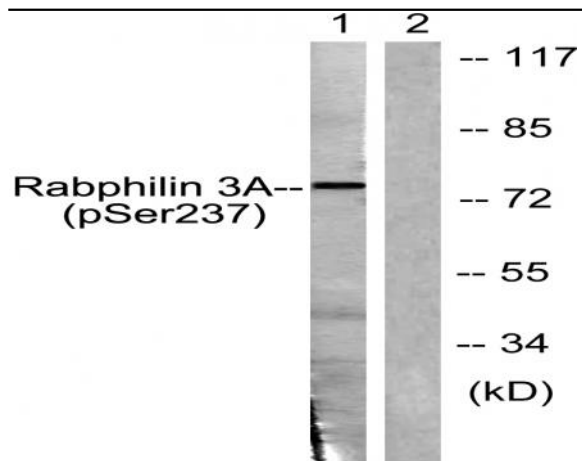
Enzyme-Linked Immunosorbent Assay (Phospho-ELISA) for Immunogen Phosphopeptide (Phospho-left) and Non-Phosphopeptide (Phospho-right), using Rabphilin 3A (Phospho-Ser237) Antibody



Immunofluorescence analysis of HeLa cells, using Rabphilin 3A (Phospho-Ser237) Antibody. The picture on the right is blocked with the phospho peptide.



Immunohistochemistry analysis of paraffin-embedded human brain, using Rabphilin 3A (Phospho-Ser237) Antibody. The picture on the right is blocked with the phospho peptide.



Western blot analysis of lysates from RAW264.7 cells treated with Calyculin 100nM 15', using Rabphilin 3A (Phospho-Ser237) Antibody. The lane on the right is blocked with the phospho peptide.