

**Rsk-1 (phospho Thr573) Polyclonal Antibody**

<b>Catalog No :</b>	YP0887
<b>Reactivity :</b>	Human;Mouse;Rat
<b>Applications :</b>	WB;IHC;IF;ELISA
<b>Target :</b>	Rsk-1
<b>Fields :</b>	>>MAPK signaling pathway;>>Oocyte meiosis;>>mTOR signaling pathway;>>Thermogenesis;>>Long-term potentiation;>>Neurotrophin signaling pathway;>>Progesterone-mediated oocyte maturation;>>Insulin resistance;>>Yersinia infection;>>Chemical carcinogenesis - receptor activation
<b>Gene Name :</b>	RPS6KA1
<b>Protein Name :</b>	Ribosomal protein S6 kinase alpha-1
<b>Human Gene Id :</b>	6195
<b>Human Swiss Prot No :</b>	Q15418
<b>Mouse Swiss Prot No :</b>	P18653
<b>Rat Gene Id :</b>	81771
<b>Rat Swiss Prot No :</b>	Q63531
<b>Immunogen :</b>	The antiserum was produced against synthesized peptide derived from human p90 RSK around the phosphorylation site of Thr573. AA range:539-588
<b>Specificity :</b>	Phospho-Rsk-1 (T573) Polyclonal Antibody detects endogenous levels of Rsk-1 protein only when phosphorylated at T573.
<b>Formulation :</b>	Liquid in PBS containing 50% glycerol, 0.5% BSA and 0.02% sodium azide.
<b>Source :</b>	Polyclonal, Rabbit,IgG
<b>Dilution :</b>	WB 1:500 - 1:2000. IHC 1:100 - 1:300. IF 1:200 - 1:1000. ELISA: 1:5000. Not

yet tested in other applications.

---

**Purification :** The antibody was affinity-purified from rabbit antiserum by affinity-chromatography using epitope-specific immunogen.

---

**Concentration :** 1 mg/ml

---

**Storage Stability :** -15°C to -25°C/1 year(Do not lower than -25°C)

---

**Observed Band :** 95kD

---

**Cell Pathway :** Regulates Angiogenesis; Insulin Receptor; B Cell Receptor; AMPK

---

**Background :** ribosomal protein S6 kinase A1(RPS6KA1) Homo sapiens This gene encodes a member of the RSK (ribosomal S6 kinase) family of serine/threonine kinases. This kinase contains 2 nonidentical kinase catalytic domains and phosphorylates various substrates, including members of the mitogen-activated kinase (MAPK) signalling pathway. The activity of this protein has been implicated in controlling cell growth and differentiation. Alternate transcriptional splice variants, encoding different isoforms, have been characterized. [provided by RefSeq, Jul 2008],

---

**Function :** catalytic activity:ATP + a protein = ADP + a phosphoprotein.,caution:The sequence shown here is derived from an Ensembl automatic analysis pipeline and should be considered as preliminary data.,cofactor:Magnesium.,enzyme regulation:Activated by multiple phosphorylations on threonine and serine residues.,function:Serine/threonine kinase that may play a role in mediating the growth-factor and stress induced activation of the transcription factor CREB.,PTM:Autophosphorylated on Ser-380, as part of the activation process.,similarity:Belongs to the protein kinase superfamily.,similarity:Belongs to the protein kinase superfamily. AGC Ser/Thr protein kinase family. S6 kinase subfamily.,similarity:Contains 1 AGC-kinase C-terminal domain.,similarity:Contains 2 protein kinase domains.,subunit:Forms a complex with either ERK1 or ERK2 in quiescent cells. Transiently dissociates following mitogenic s

---

**Subcellular Location :** Nucleus. Cytoplasm.

---

**Expression :** Colon,Epithelium,

---

**Tag :** orthogonal

---

**Sort :** 14621

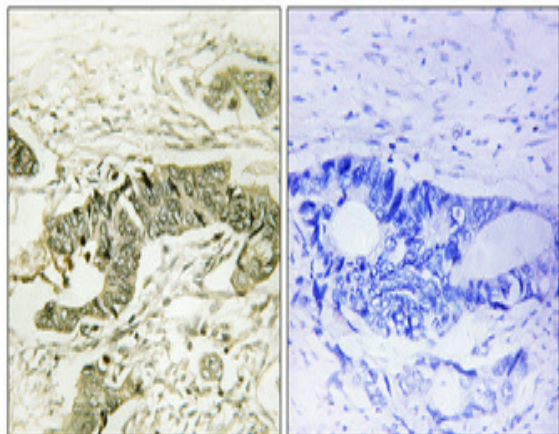
---

**No4 :** 1

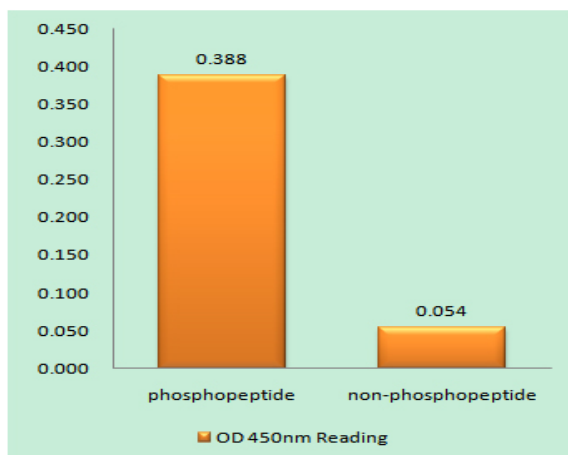
---

**Host :** Rabbit**Modifications :** Phospho

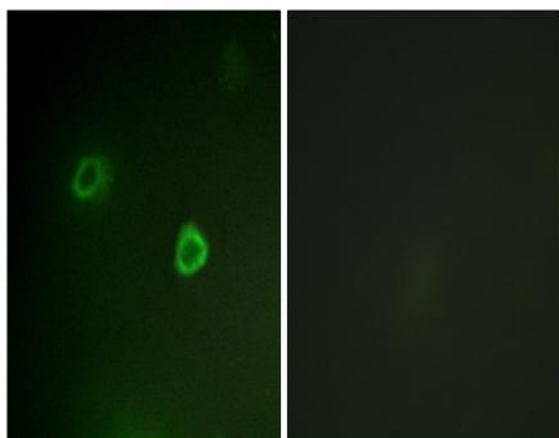
## Products Images



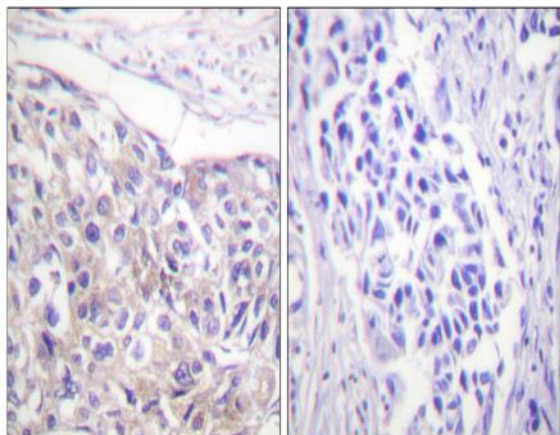
Immunohistochemical analysis of paraffin-embedded Human colon cancer. Antibody was diluted at 1:100(4° overnight). High-pressure and temperature Tris-EDTA, pH8.0 was used for antigen retrieval. Negative control (right) obtained from antibody was pre-absorbed by immunogen peptide.



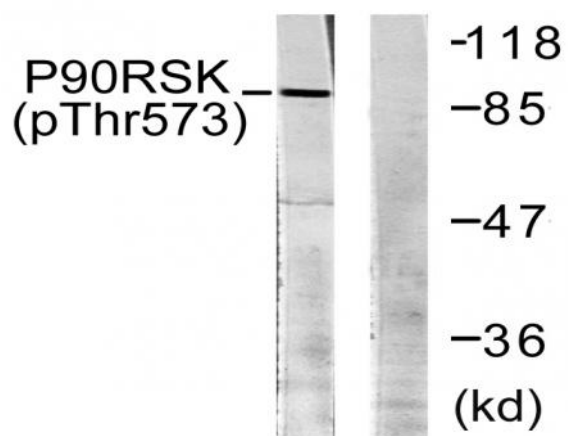
Enzyme-Linked Immunosorbent Assay (Phospho-ELISA) for Immunogen Phosphopeptide (Phospho-left) and Non-Phosphopeptide (Phospho-right), using p90 RSK (Phospho-Thr573) Antibody



Immunofluorescence analysis of COS7 cells, using p90 RSK (Phospho-Thr573) Antibody. The picture on the right is blocked with the phospho peptide.



Immunohistochemistry analysis of paraffin-embedded human breast carcinoma, using p90 RSK (Phospho-Thr573) Antibody. The picture on the right is blocked with the phospho peptide.



Western blot analysis of lysates from 293 cells treated with UV 30', using p90 RSK (Phospho-Thr573) Antibody. The lane on the right is blocked with the phospho peptide.