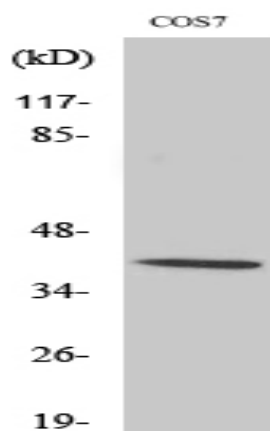


Crk-L (phospho Tyr207) Polyclonal Antibody

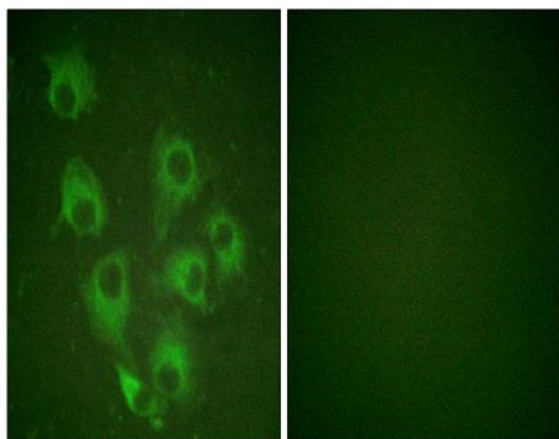
| | |
|------------------------------|---|
| Catalog No : | YP0869 |
| Reactivity : | Human;Mouse;Rat;Monkey |
| Applications : | WB;IHC;IF;ELISA |
| Target : | Crk-L |
| Fields : | >>MAPK signaling pathway;>>ErbB signaling pathway;>>Rap1 signaling pathway;>>Chemokine signaling pathway;>>Focal adhesion;>>Fc gamma R-mediated phagocytosis;>>Neurotrophin signaling pathway;>>Regulation of actin cytoskeleton;>>Insulin signaling pathway;>>Growth hormone synthesis, secretion and action;>>Bacterial invasion of epithelial cells;>>Shigellosis;>>Yersinia infection;>>Human cytomegalovirus infection;>>Human immunodeficiency virus 1 infection;>>Pathways in cancer;>>MicroRNAs in cancer;>>Renal cell carcinoma;>>Chronic myeloid leukemia |
| Gene Name : | CRKL |
| Protein Name : | Crk-like protein |
| Human Gene Id : | 1399 |
| Human Swiss Prot No : | P46109 |
| Mouse Gene Id : | 12929 |
| Mouse Swiss Prot No : | P47941 |
| Rat Gene Id : | 1.00911e+008 |
| Rat Swiss Prot No : | Q5U2U2 |
| Immunogen : | The antiserum was produced against synthesized peptide derived from human CrkL around the phosphorylation site of Tyr207. AA range:173-222 |
| Specificity : | Phospho-Crk-L (Y207) Polyclonal Antibody detects endogenous levels of Crk-L protein only when phosphorylated at Y207. |

| | |
|-------------------------------|--|
| Formulation : | Liquid in PBS containing 50% glycerol, 0.5% BSA and 0.02% sodium azide. |
| Source : | Polyclonal, Rabbit,IgG |
| Dilution : | WB 1:500 - 1:2000. IHC 1:100 - 1:300. IF 1:200 - 1:1000. ELISA: 1:5000. Not yet tested in other applications. |
| Purification : | The antibody was affinity-purified from rabbit antiserum by affinity-chromatography using epitope-specific immunogen. |
| Concentration : | 1 mg/ml |
| Storage Stability : | -15°C to -25°C/1 year(Do not lower than -25°C) |
| Observed Band : | 39kD |
| Cell Pathway : | MAPK_ERK_Growth;MAPK_G_Protein;ErbB_HER;Chemokine;Focal adhesion;Fc gamma R-mediated phagocytosis;Neurotrophin;Regulates Actin and Cytoskeleton;Insulin_Receptor;Pathways in cancer;Renal cell carcinoma |
| Background : | This gene encodes a protein kinase containing SH2 and SH3 (src homology) domains which has been shown to activate the RAS and JUN kinase signaling pathways and transform fibroblasts in a RAS-dependent fashion. It is a substrate of the BCR-ABL tyrosine kinase, plays a role in fibroblast transformation by BCR-ABL, and may be oncogenic.[provided by RefSeq, Jan 2009], |
| Function : | function:May mediate the transduction of intracellular signals.,similarity:Contains 1 SH2 domain.,similarity:Contains 2 SH3 domains.,subunit:Interacts with INPP5D/SHIP1. Interacts with DOCK2 and EPOR. Interacts with phosphorylated CBLB and IRS4., |
| Subcellular Location : | endosome,cytosol,cell-cell adherens junction,extracellular exosome, |
| Expression : | Skin,Spleen, |
| Sort : | 4576 |
| No2 : | 3181L |
| No4 : | 1 |
| Host : | Rabbit |
| Modifications : | Phospho |

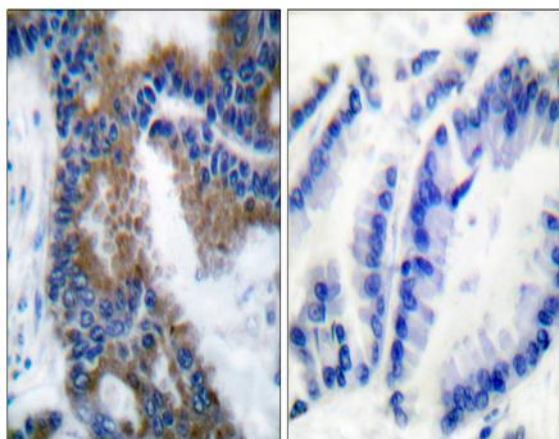
Products Images



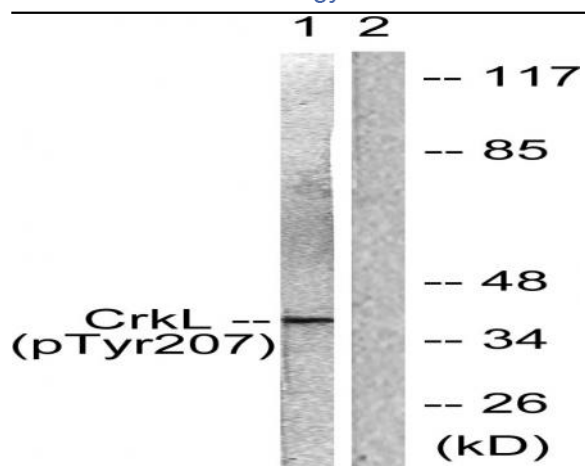
Western Blot analysis of various cells using Phospho-Crk-L (Y207) Polyclonal Antibody



Immunofluorescence analysis of HUVEC cells, using CrkL (Phospho-Tyr207) Antibody. The picture on the right is blocked with the phospho peptide.



Immunohistochemistry analysis of paraffin-embedded human lung carcinoma, using CrkL (Phospho-Tyr207) Antibody. The picture on the right is blocked with the phospho peptide.



Western blot analysis of lysates from COS7 cells, using CrkL (Phospho-Tyr207) Antibody. The lane on the right is blocked with the phospho peptide.