

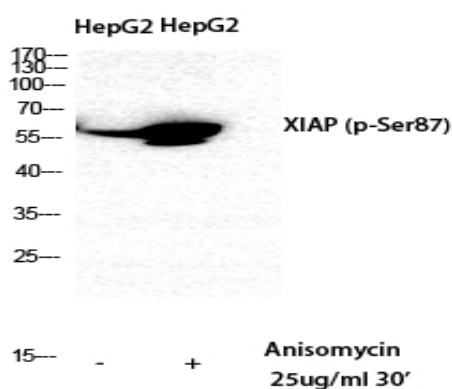
## XIAP (phospho Ser87) Polyclonal Antibody

<b>Catalog No :</b>	YP0681
<b>Reactivity :</b>	Human;Mouse;Rat
<b>Applications :</b>	WB;IHC;IF;ELISA
<b>Target :</b>	XIAP
<b>Fields :</b>	>>Platinum drug resistance;>>NF-kappa B signaling pathway;>>Ubiquitin mediated proteolysis;>>Apoptosis;>>Apoptosis - multiple species;>>Necroptosis;>>Focal adhesion;>>NOD-like receptor signaling pathway;>>Toxoplasmosis;>>Human T-cell leukemia virus 1 infection;>>Pathways in cancer;>>Chemical carcinogenesis - receptor activation;>>Small cell lung cancer
<b>Gene Name :</b>	XIAP
<b>Protein Name :</b>	E3 ubiquitin-protein ligase XIAP
<b>Human Gene Id :</b>	331
<b>Human Swiss Prot No :</b>	P98170
<b>Mouse Gene Id :</b>	11798
<b>Mouse Swiss Prot No :</b>	Q60989
<b>Rat Gene Id :</b>	63879
<b>Rat Swiss Prot No :</b>	Q9R0I6
<b>Immunogen :</b>	The antiserum was produced against synthesized peptide derived from human XIAP around the phosphorylation site of Ser87. AA range:53-102
<b>Specificity :</b>	Phospho-XIAP (S87) Polyclonal Antibody detects endogenous levels of XIAP protein only when phosphorylated at S87.
<b>Formulation :</b>	Liquid in PBS containing 50% glycerol, 0.5% BSA and 0.02% sodium azide.

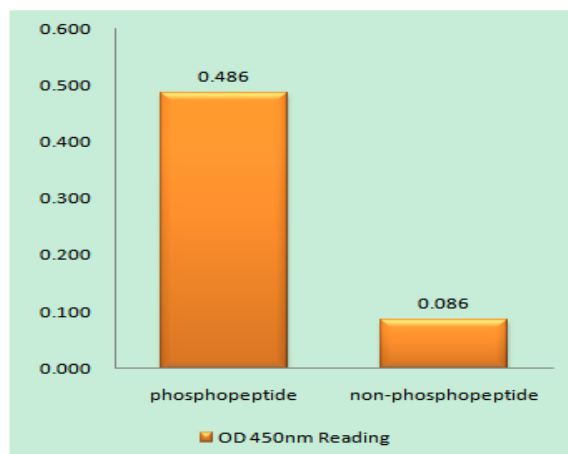
<b>Source :</b>	Polyclonal, Rabbit,IgG
<b>Dilution :</b>	WB 1:500 - 1:2000. IHC 1:100 - 1:300. ELISA: 1:20000.. IF 1:50-200
<b>Purification :</b>	The antibody was affinity-purified from rabbit antiserum by affinity-chromatography using epitope-specific immunogen.
<b>Concentration :</b>	1 mg/ml
<b>Storage Stability :</b>	-15°C to -25°C/1 year(Do not lower than -25°C)
<b>Observed Band :</b>	57kD
<b>Cell Pathway :</b>	Ubiquitin mediated proteolysis;Apoptosis_Inhibition;Apoptosis_Mitochondrial;Apoptosis_Overview;Focal adhesion;NOD-like receptor;Pathways in cancer;Small cell lung cancer;
<b>Background :</b>	This gene encodes a protein that belongs to a family of apoptotic suppressor proteins. Members of this family share a conserved motif termed, baculovirus IAP repeat, which is necessary for their anti-apoptotic function. This protein functions through binding to tumor necrosis factor receptor-associated factors TRAF1 and TRAF2 and inhibits apoptosis induced by menadione, a potent inducer of free radicals, and interleukin 1-beta converting enzyme. This protein also inhibits at least two members of the caspase family of cell-death proteases, caspase-3 and caspase-7. Mutations in this gene are the cause of X-linked lymphoproliferative syndrome. Alternate splicing results in multiple transcript variants. Pseudogenes of this gene are found on chromosomes 2 and 11.[provided by RefSeq, Feb 2011],
<b>Function :</b>	disease:Defects in XIAP are the cause of lymphoproliferative syndrome X-linked type 2 (XLP2) [MIM:300635]. XLP is a rare immunodeficiency characterized by extreme susceptibility to infection with Epstein-Barr virus (EBV). Symptoms include severe or fatal mononucleosis, acquired hypogammaglobulinemia, pancytopenia and malignant lymphoma.,domain:The first BIR domain is involved in interaction with MAP3K7IP1 and is important for dimerization. The second BIR domain is sufficient to inhibit caspase-3 and caspase-7, while the third BIR is involved in caspase-9 inhibition. The interactions with SMAC and PRSS25 are mediated by the second and third BIR domains.,function:Apoptotic suppressor. Has E3 ubiquitin-protein ligase activity. Mediates the proteasomal degradation of target proteins, such as caspase-3, SMAC or AIFM1. Inhibitor of caspase-3, -7 and -9. Mediates activation of MAP3K7/TAK1, lead
<b>Subcellular Location :</b>	Cytoplasm. Nucleus. TLE3 promotes its nuclear localization.
<b>Expression :</b>	Expressed in colonic crypts (at protein level) (PubMed:30389919). Ubiquitous, except peripheral blood leukocytes (PubMed:8654366).

<b>Tag :</b>	orthogonal
<b>Sort :</b>	1269
<b>No4 :</b>	1
<b>Host :</b>	Rabbit
<b>Modifications :</b>	Phospho

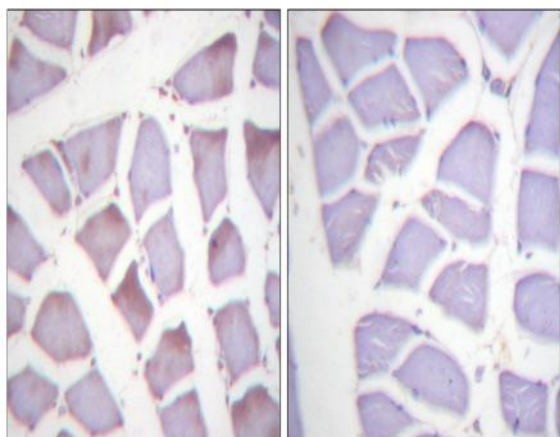
## Products Images



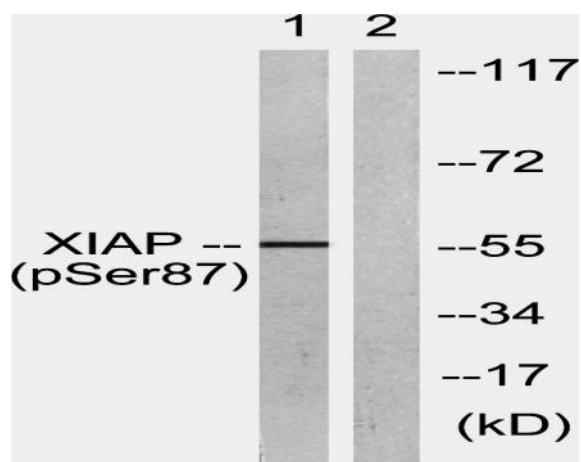
Western Blot analysis of HepG2 cells using Phospho-XIAP (S87) Polyclonal Antibody diluted at 1:500



Enzyme-Linked Immunosorbent Assay (Phospho-ELISA) for Immunogen Phosphopeptide (Phospho-left) and Non-Phosphopeptide (Phospho-right), using XIAP (Phospho-Ser87) Antibody



Immunohistochemistry analysis of paraffin-embedded human skeletal muscle, using XIAP (Phospho-Ser87) Antibody. The picture on the right is blocked with the phospho peptide.



Western blot analysis of lysates from HepG2 cells treated with Anisomycin 25ug/ml 30', using XIAP (Phospho-Ser87) Antibody. The lane on the right is blocked with the phospho peptide.