

Troponin I-C (phospho Ser22/S23) Polyclonal Antibody

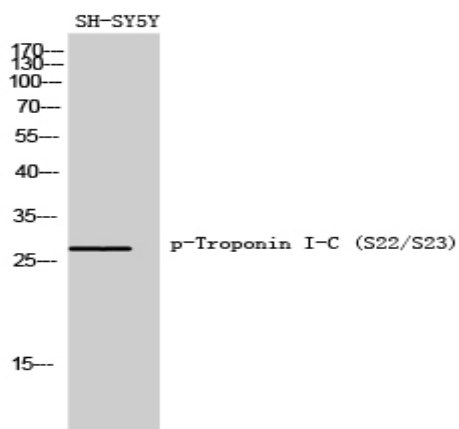
| | |
|------------------------------|---|
| Catalog No : | YP0675 |
| Reactivity : | Mouse;Rat |
| Applications : | WB;IHC;IF;ELISA |
| Target : | Troponin I-C |
| Gene Name : | Tnni3 |
| Protein Name : | Troponin I cardiac muscle |
| Human Swiss Prot No : | P19429 |
| Mouse Gene Id : | 21954 |
| Rat Gene Id : | 29248 |
| Rat Swiss Prot No : | P23693 |
| Immunogen : | The antiserum was produced against synthesized peptide derived from mouse TNNI3 around the phosphorylation site of Ser22 and Ser23. AA range:5-54 |
| Specificity : | Phospho-Troponin I-C (S22/S23) Polyclonal Antibody detects endogenous levels of Troponin I-C protein only when phosphorylated at S22/S23. |
| Formulation : | Liquid in PBS containing 50% glycerol, 0.5% BSA and 0.02% sodium azide. |
| Source : | Polyclonal, Rabbit,IgG |
| Dilution : | WB 1:500 - 1:2000. IHC 1:100 - 1:300. ELISA: 1:20000.. IF 1:50-200 |
| Purification : | The antibody was affinity-purified from rabbit antiserum by affinity-chromatography using epitope-specific immunogen. |
| Concentration : | 1 mg/ml |
| Storage Stability : | -15°C to -25°C/1 year(Do not lower than -25°C) |

Observed Band : 28kD

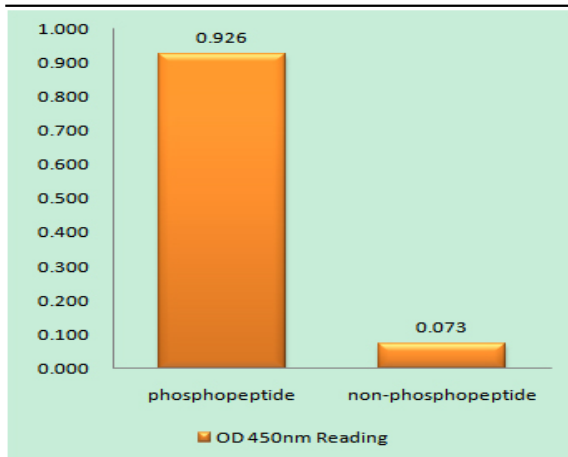
Background : Troponin I (TnI), along with troponin T (TnT) and troponin C (TnC), is one of 3 subunits that form the troponin complex of the thin filaments of striated muscle. TnI is the inhibitory subunit; blocking actin-myosin interactions and thereby mediating striated muscle relaxation. The TnI subfamily contains three genes: tnl-skeletal-fast-twitch, TnI-skeletal-slow-twitch, and TnI-cardiac. This gene encodes the TnI-cardiac protein and is exclusively expressed in cardiac muscle tissues. Mutations in this gene cause familial hypertrophic cardiomyopathy type 7 (CMH7) and familial restrictive cardiomyopathy (RCM).

Tag : hot**Sort :** 23588**No2 :** 4004S**No4 :** 1**Host :** Rabbit**Modifications :** Phospho

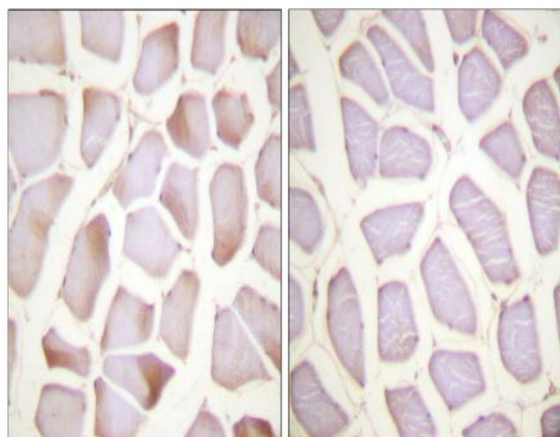
Products Images



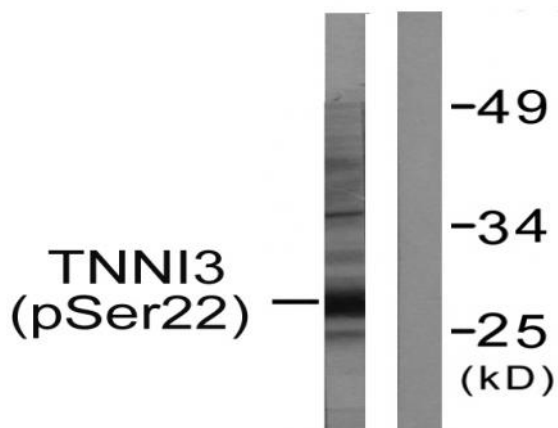
Western Blot analysis of SH-SY5Y cells using Phospho-Troponin I-C (S22/S23) Polyclonal Antibody diluted at 1:1000



Enzyme-Linked Immunosorbent Assay (Phospho-ELISA) for Immunogen Phosphopeptide (Phospho-left) and Non-Phosphopeptide (Phospho-right), using TNNI3 (Phospho-Ser22+Ser23) Antibody



Immunohistochemistry analysis of paraffin-embedded human skeletal muscle, using TNNI3 (Phospho-Ser22+Ser23) Antibody. The picture on the right is blocked with the phospho peptide.



Western blot analysis of lysates from mouse heart, using TNNI3 (Phospho-Ser22+Ser23) Antibody. The lane on the right is blocked with the phospho peptide.