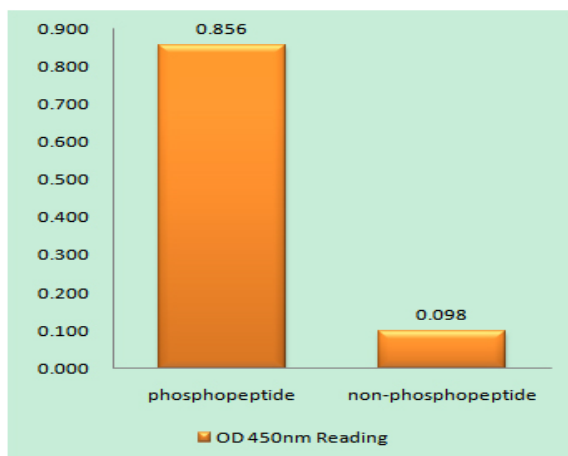


Synapsin I (phospho Ser62) Polyclonal Antibody

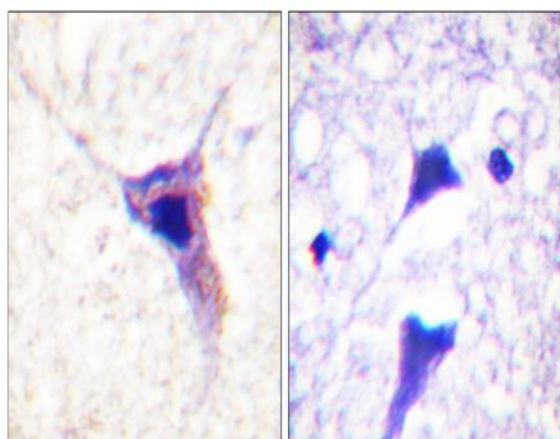
Catalog No :	YP0672
Reactivity :	Human;Mouse;Rat
Applications :	WB;IHC;IF;ELISA
Target :	Synapsin I
Gene Name :	SYN1
Protein Name :	Synapsin-1
Human Gene Id :	6853
Human Swiss Prot No :	P17600
Mouse Gene Id :	20964
Mouse Swiss Prot No :	O88935
Rat Gene Id :	24949
Rat Swiss Prot No :	P09951
Immunogen :	The antiserum was produced against synthesized peptide derived from human Synapsin1 around the phosphorylation site of Ser62. AA range:26-75
Specificity :	Phospho-Synapsin I (S62) Polyclonal Antibody detects endogenous levels of Synapsin I protein only when phosphorylated at S62.
Formulation :	Liquid in PBS containing 50% glycerol, 0.5% BSA and 0.02% sodium azide.
Source :	Polyclonal, Rabbit,IgG
Dilution :	WB 1:500 - 1:2000. IHC 1:100 - 1:300. ELISA: 1:10000.. IF 1:50-200
Purification :	The antibody was affinity-purified from rabbit antiserum by affinity-chromatography using epitope-specific immunogen.

Concentration :	1 mg/ml
Storage Stability :	-15°C to -25°C/1 year(Do not lower than -25°C)
Observed Band :	80kD
Background :	<p>This gene is a member of the synapsin gene family. Synapsins encode neuronal phosphoproteins which associate with the cytoplasmic surface of synaptic vesicles. Family members are characterized by common protein domains, and they are implicated in synaptogenesis and the modulation of neurotransmitter release, suggesting a potential role in several neuropsychiatric diseases. This member of the synapsin family plays a role in regulation of axonogenesis and synaptogenesis. The protein encoded serves as a substrate for several different protein kinases and phosphorylation may function in the regulation of this protein in the nerve terminal. Mutations in this gene may be associated with X-linked disorders with primary neuronal degeneration such as Rett syndrome. Alternatively spliced transcript variants encoding different isoforms have been identified. [provided by RefSeq, Jul 2008],</p>
Function :	<p>disease:Defects in SYN1 are a cause of epilepsy X-linked with variable learning disabilities and behavior disorders [MIM:300491]. XELBD is characterized by variable combinations of epilepsy, learning difficulties, macrocephaly, and aggressive behavior.,function:Neuronal phosphoprotein that coats synaptic vesicles, binds to the cytoskeleton, and is believed to function in the regulation of neurotransmitter release. The complex formed with NOS1 and CAPON proteins is necessary for specific nitric-oxid functions at a presynaptic level.,PTM:Substrate of at least four different protein kinases. It is probable that phosphorylation plays a role in the regulation of synapsin-1 in the nerve terminal. Phosphorylated upon DNA damage, probably by ATM or ATR.,similarity:Belongs to the synapsin family.,subunit:Homodimer. Interacts with CAPON. Forms a ternary complex with NOS1. Isoform Ib interacts with</p>
Subcellular Location :	Cell junction, synapse. Golgi apparatus .
Expression :	Brain,Brain cortex,
Tag :	orthogonal
Sort :	16800
No4 :	1
Host :	Rabbit
Modifications :	Phospho

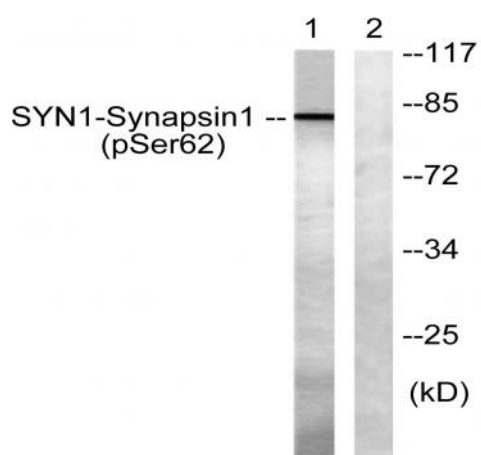
Products Images



Enzyme-Linked Immunosorbent Assay (Phospho-ELISA) for Immunogen Phosphopeptide (Phospho-left) and Non-Phosphopeptide (Phospho-right), using Synapsin1 (Phospho-Ser62) Antibody



Immunohistochemistry analysis of paraffin-embedded human brain, using Synapsin1 (Phospho-Ser62) Antibody. The picture on the right is blocked with the phospho peptide.



Western blot analysis of lysates from HeLa cells treated with Anisomycin 25ug/ml 30', using Synapsin1 (Phospho-Ser62) Antibody. The lane on the right is blocked with the phospho peptide.